



At Enid Lake you will find some of the most modern camping facilities in the region. Our campgrounds are extremely popular among camping enthusiasts. The U.S. Army Corps of Engineers at Enid Lake maintains and operates 5 Class A campgrounds which include: Wallace Creek, Persimmon Hill, Chickasaw Hill, Ford's Well and Water Valley Landing.

Enid Lake not only provides premier camping opportunities, but offers many other recreational opportunities including hiking, boating, swimming, picnicking, fishing, hunting, boating, horseback riding and wildlife viewing. Enid Lake has been recognized as one of America's Top 10 Fishing Spots, and Enid's Persimmon Hill Campground has been selected as one of America's Top 100 Family Campgrounds twice by the National Recreation Reservation Service.

With 220 miles of pristine shoreline Enid Lake provides visitors with a truly unforgettable natural experience. Enid Lake has become one of the top crappie fishing destinations in the world and is home to the world record 5 pound 3 ounce white crappie. The nutrient rich water and ample cover provides

exceptional fishing opportunities for other species as well including: bass, bluegill and catfish. Enid's staff partners with local volunteers annually to enhance fish habitat through placement of approximately 1,500 cedar tree tops and 2,000 wooden stakes to construct 500 fish shelters in the lake bed. Located at the Outlet Channel Recreation Area is a large fishing pier with facilities and access specifically designed for use by the physically challenged.

Enid also has 13 boat ramps located around the lake to provide boating access for a variety of boating needs. The largest and most utilized of these boat ramps is McCurdy Point which offers a floating boat dock and rubber landing which eases loading and unloading of equipment and to accommodate larger vessels.

The reservoir provides an excellent winter water source for resident wildlife and migratory birds. Opportunities for hunting and bird watching abound. Dean Hill and Springdale Wildlife Management Areas provide an additional 3,500 acres of shallow water and flooded hardwood forests wetland habitat for a variety of wildlife species.

### About Us

Established in 1873, the Vicksburg District is one of the U.S. Army Corps of Engineers' largest civil works districts. It encompasses more than 68,000 square miles in Arkansas, Mississippi, and Louisiana. Key products and services include: navigation, flood damage reduction, environmental stewardship, recreation, hydroelectric power, emergency response, water supply and support to others.

### Dam Statistics

Type .....	Earth Fill
Purpose .....	Flood Control
Construction Completed.....	December 1952
Drainage Area .....	560 Square Miles
Average Height.....	85 Feet
Average Base Width .....	410 Feet
Length .....	8,400 Feet
Spillway Capacity.....	49,700 CFS

### Lake Statistics

Conservation Pool Elevation .....	230 Feet NGVD
Recreation Pool Elevation .....	250 Feet NGVD
Spillway Crest Elevation .....	268 Feet NGVD
Shoreline .....	220 Miles
Pool Area .....	28,000 Acres
Storage Capacity .....	602,400 Acre-Feet*

\*One acre-foot equals one acre of water one foot deep or 325,850 gallons



For more information please contact:  
 Enid Lake Field Office  
 P.O. Box 10  
 Enid, MS 38927  
 (662) 563-4571  
<http://www.mvk.usace.army.mil/Missions/Recreation/Enid-Lake/>



# Enid Lake

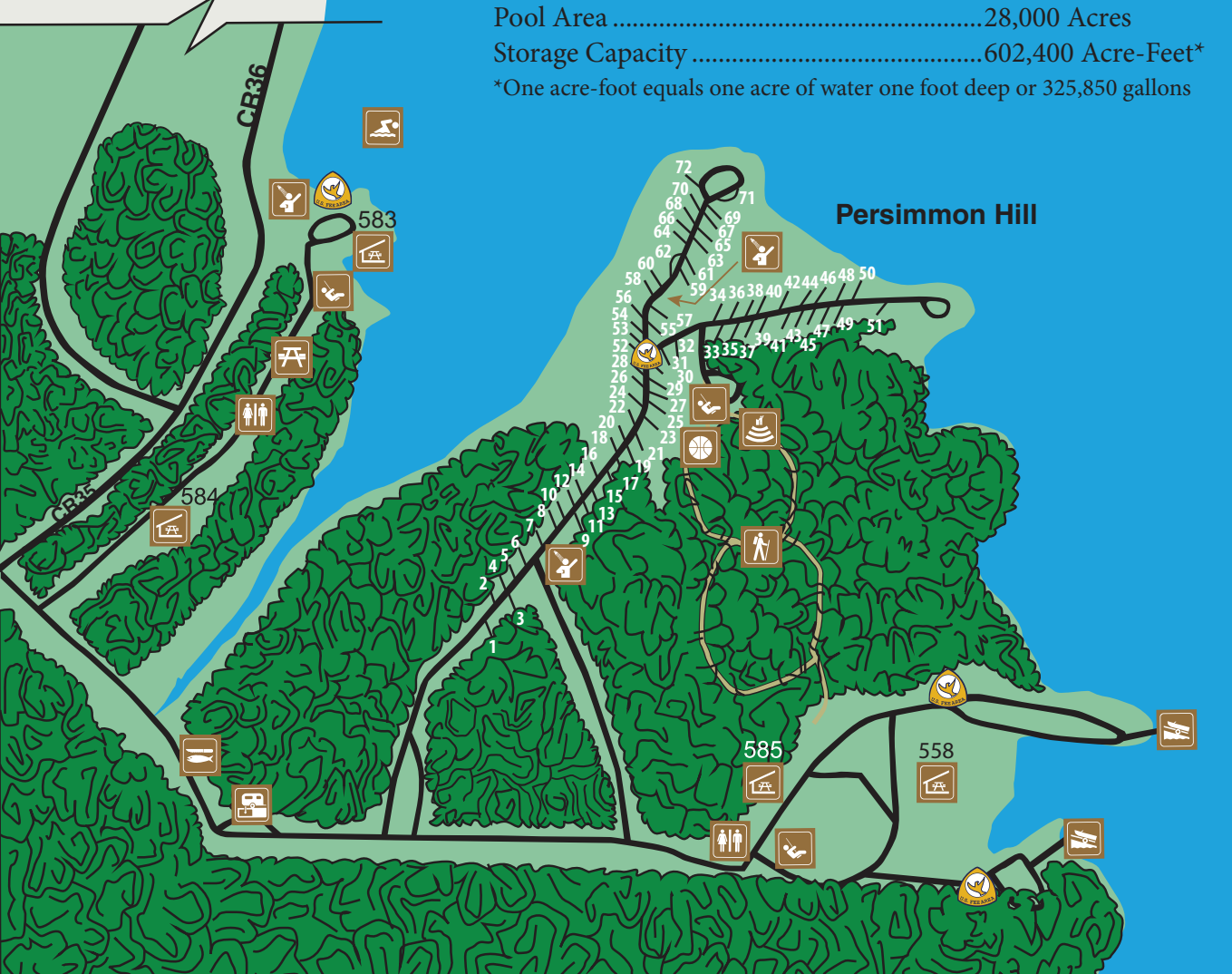
- Contact Information**
- Enid Lake Ranger Cell Phone..... (662) 654-4078
  - George Payne Cossar State Park..... (662) 623-7356
  - North MS Fish Hatchery..... (662) 563-8068
  - MDWFP North Region Office..... (662) 563-6222
  - Yalobusha County Sheriff Dept. .... (662) 473-2722
  - Panola County Sheriff Dept. .... (662) 563-6231
  - Lafayette County Sheriff Dept..... (662) 234-6421
  - MS Highway Patrol..... (662) 563-4651
  - Medical Emergency..... 911

For Campsite Reservations:  
 Toll Free 1-877-444-6777  
 International 518-885-3639



### Legend

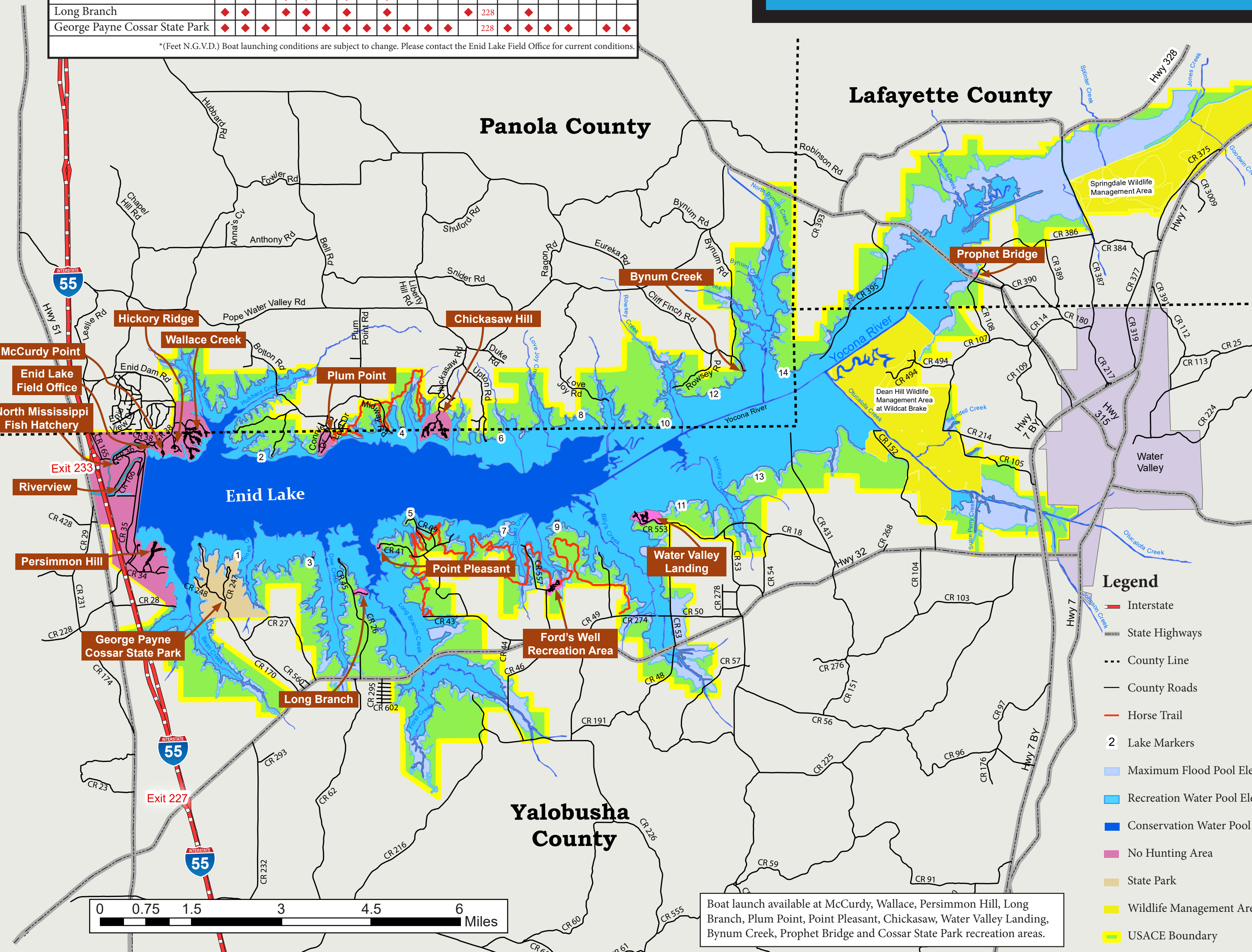
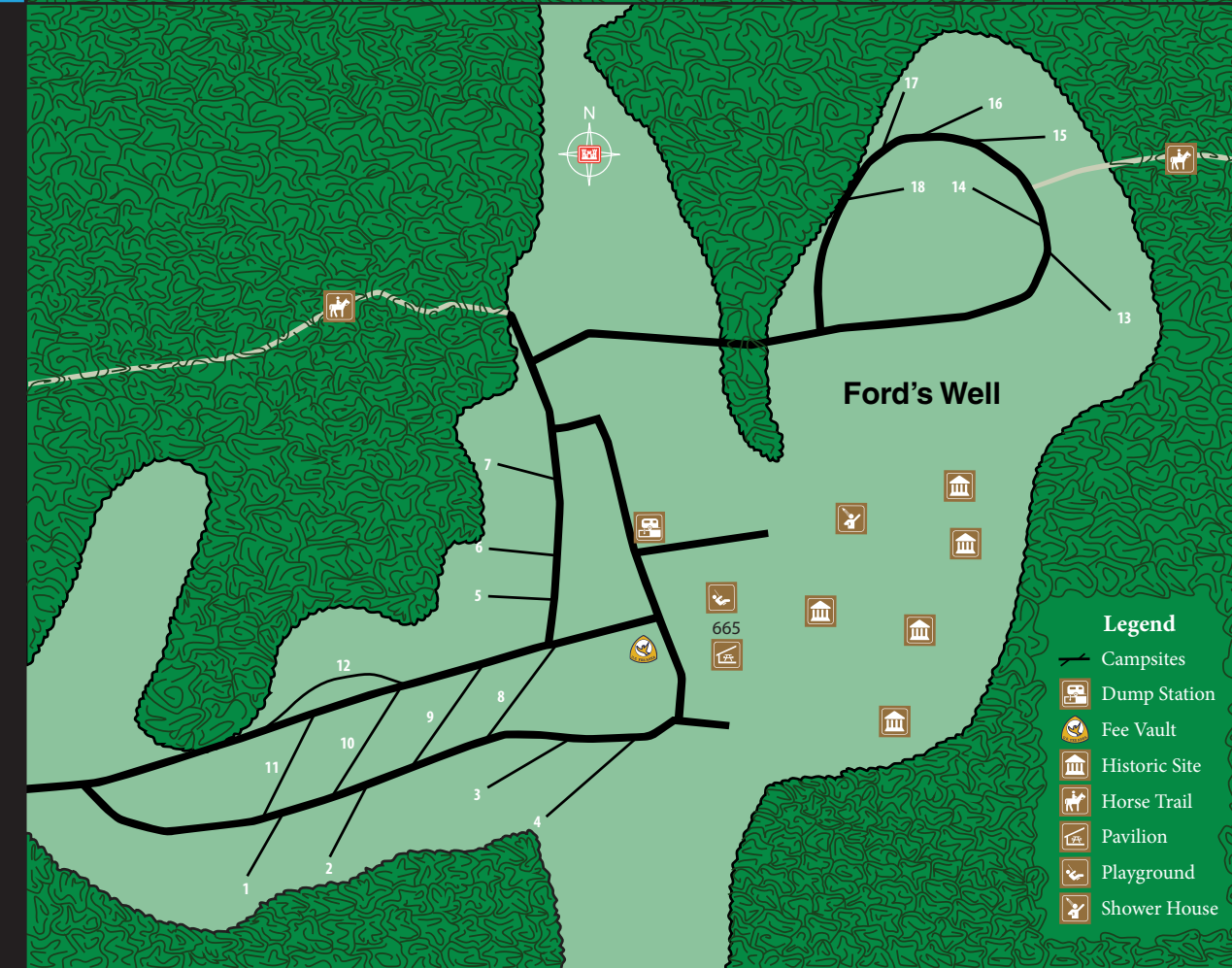
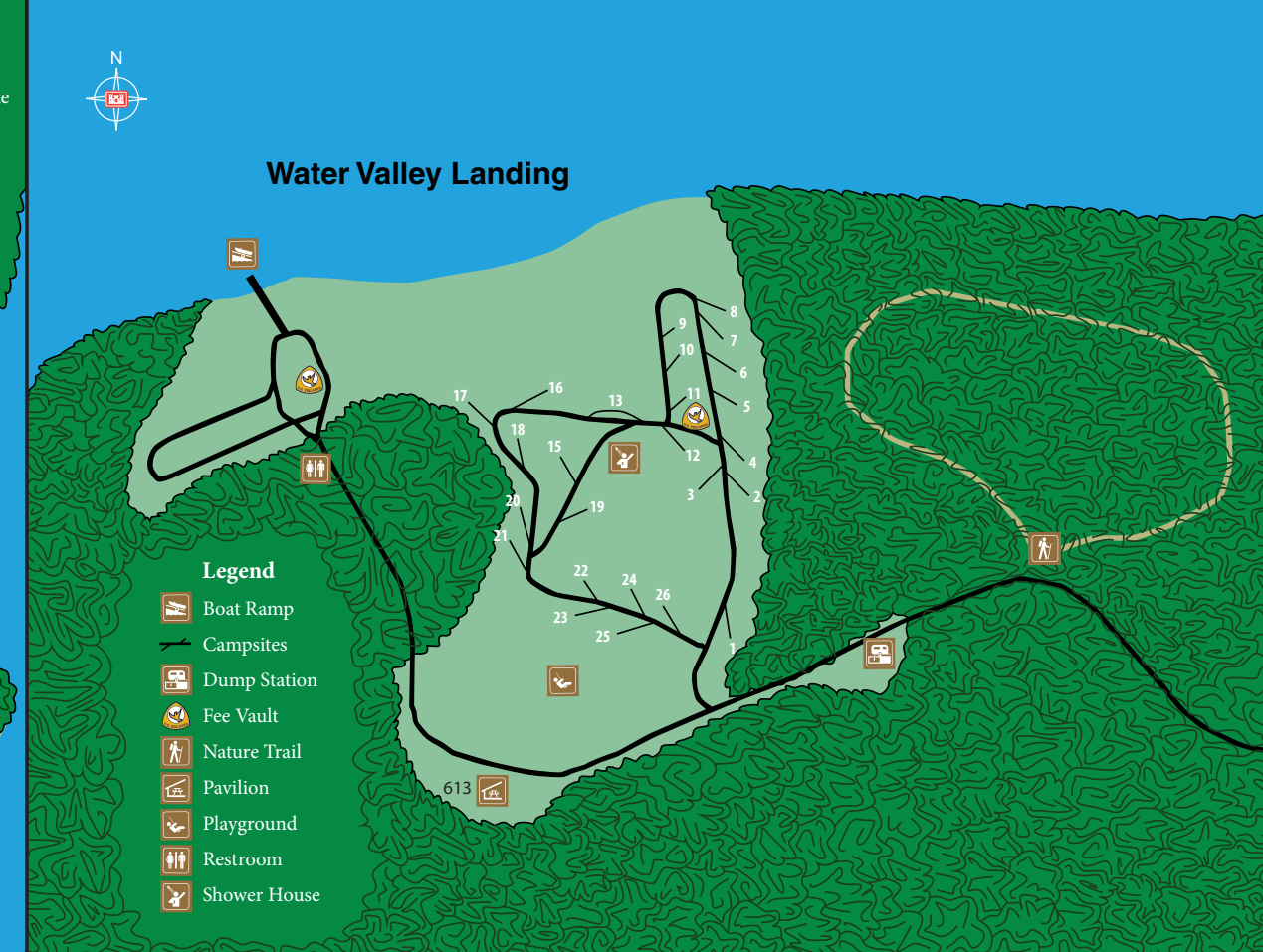
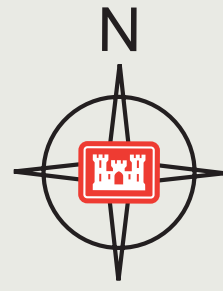
- ADA Fishing Area
- Amphitheater
- Basketball Court
- Boat Ramp
- Campsites
- Dump Station
- Enid Lake Field Office
- Fee Vault
- Fish Cleaning Station
- Fitness Area
- Football/Soccer Field
- MDWFP Regional Office
- North MS Fish Hatchery
- Pavilion
- Picnic Area
- Playground
- Restroom
- Shower House
- Softball Field
- Stage
- Swim Beach
- Tennis Court
- Volleyball Court
- Walking Trail



# Public Recreation Areas

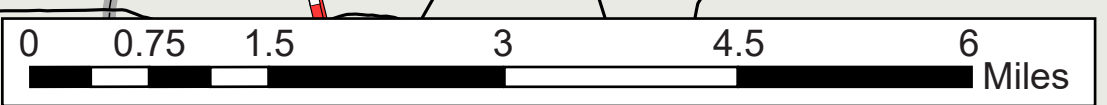
	User Fee	Camping (Fee)	Reservable Campsites	Camping (Primitive)	Picnic Tables/Grills	Picnic Shelters	Restrooms	Showers	Drinking Water	Electrical Hook-ups 30 and 50 amp	Individual Site Sewage Hook-ups	Sanitary Dump Station	Swimming Beach	Boat Ramp	Fish Cleaning Station	Playground Equipment	Amphitheater	Hiking Trail	Horse Trail	Lodging	Sports Field/Court
McCurdy Point	◆			◆	◆	◆	◆	◆			227	◆	◆								
Hickory Ridge	◆			◆	◆	◆	◆	◆													◆
Wallace Creek	◆	◆	◆	◆	◆	◆	◆	◆			228										
Outlet Channel														◆	◆						
Riverview																					◆
Persimmon Hill		◆	◆	◆	◆	◆	◆	◆	◆	◆	225	◆	◆								◆
Plum Point		◆	◆	◆	◆	◆	◆	◆			228										◆
Chickasaw Hill	◆	◆	◆	◆	◆	◆	◆	◆			227										
Bynum Creek											240										
Prophet Bridge											243										
Water Valley Landing	◆	◆	◆	◆	◆	◆	◆	◆	◆	◆	228		◆								
Ford's Well																					◆
Point Pleasant											230										
Long Branch	◆	◆									228										
George Payne Cossar State Park	◆	◆									228		◆	◆	◆	◆	◆	◆	◆	◆	◆

\*(Feet N.G.V.D.) Boat launching conditions are subject to change. Please contact the Enid Lake Field Office for current conditions.



### Legend

- Interstate
- State Highways
- County Line
- County Roads
- Horse Trail
- Lake Markers
- Maximum Flood Pool Elev 268
- Recreation Water Pool Elev 250
- Conservation Water Pool Elev 230
- No Hunting Area
- State Park
- Wildlife Management Area (Special Hunting Regs)
- USACE Boundary



Boat launch available at McCurdy, Wallace, Persimmon Hill, Long Branch, Plum Point, Point Pleasant, Chickasaw, Water Valley Landing, Bynum Creek, Prophet Bridge and Cossar State Park recreation areas.

