

MISSISSIPPI
Museum of
Natural
Science

NATURAL NEWSLINE

VOL. 26 • NO. 11
SUMMER/FALL 2008

T-rex Ahead.



DINOSAURS are on the move at the Museum! Sightings daily through January 4, 2009.

Nine amazing and lifelike robotic creatures, including a *Tyrannosaurus rex*, will take you back millions of years. All it takes is a trip to the Museum, where these prehistoric pedestrians are enjoying the right of way.

From a *Protoceratops* with hatchlings to a multi-plated *Stegosaurus*, these



robotic dinosaurs are fascinating to children and adults alike. Hear them roar, and watch them feed and care for their young. Learn which beasts may have been

fighters and active hunters of other dinosaurs as prey and which creatures fed on tender plants. See the *Pteranodon*, the prehistoric sky king, whose wingspread was as wide as a soccer goal. Find out which dinosaur had eyes as big as soccer balls and possibly binocular vision. Understand how the horn-faced *Triceratops* protected itself from attackers and how much time the peaceful *Apatosaurus* may have spent in the water and why.

Kokoro, the company that created the robotic dinosaurs, consults with distinguished paleontologists on all aspects of the creatures' attributes and functioning during development. Each creature is individually handcrafted and computer-programmed.

The Museum's First Tuesday lecture series this summer will feature dinosaur-related topics. Be sure to join us in June and July for Fun Fridays which will also feature prehistoric creatures (see right column for details). And don't miss the chance to pick up unique dino gifts in the Museum's Dragonfly Shoppe.

Prehistoric Fun Fridays

Fun Fridays are interactive programs in June and July (except July 4) that coordinate with the *DINOSAURS!* exhibit. An adult must accompany children.

June 6
Dinosaurs

June 13
Fossils

June 20
Prehistoric Mammals

June 27
Prehistoric Fish

July 4
Museum Closed

July 11
Prehistoric Insects

July 18
Prehistoric Birds

July 25
Prehistoric Reptiles

Dinosaur Lecture

How YOU Can Prevent Dinosaurs from Going Extinct!!

TUE • JUL 1 • 12NOON-1PM

Speaker: John Davis



artwork by Steve Peterson

Learn how the adventurer who discovered *Tyrannosaurus rex* also uncovered the clue to living dinosaurs. Find out how YOU can attract, enjoy, and protect them from extinction. See calendar for more details.

THE NATURAL NEWSLINE IS SPONSORED IN PART BY THE JACKSON CONVENTION & VISITORS BUREAU.

MISSISSIPPI
Museum of
Natural
Science

MISSISSIPPI DEPARTMENT OF
WILDLIFE, FISHERIES AND PARKS

Sam Polles, Ph.D.
EXECUTIVE DIRECTOR

Al Tuck DEPUTY DIRECTOR Robert Cook DEPUTY ADMINISTRATOR

COMMISSIONERS
John C. Stanley, IV CHAIRMAN William C. Deviney, Jr. VICE CHAIRMAN
Bryan Jones Jerry Munro Charles Rigdon

MUSEUM STAFF
Libby Hartfield MUSEUM DIRECTOR
Charles Knight ASSISTANT MUSEUM DIRECTOR

ADMINISTRATION
Mary Jenkins EXECUTIVE ASSISTANT
Connie Gore GIFT SHOP MANAGER
Mary Stevens LIBRARIAN
Harold Garner FACILITIES MAINTENANCE MANAGER
Fran Noone RECEPTIONIST
Brandy Jenkins ADMINISTRATIVE ASSISTANT
Shirley Hall CUSTODIAL SUPERVISOR
Charles Jeffcoat CUSTODIAN

EXHIBIT MANAGEMENT
Norton McKeigey EXHIBITS SUPERVISOR
Ray Terry EXHIBITS SUPERVISOR

NATURAL HERITAGE
Sherry Surette, Ph.D. NATURAL HERITAGE PROGRAM COORDINATOR
Adrienne Clark DATABASE TECHNICIAN
Aaron Francois DATABASE TECHNICIAN
Tom Mann BIOLOGIST

AQUARIUMS
Terry Majure AQUARIUM COORDINATOR
Karen Dierolf AQUATIC BIOLOGIST
Bryan Fedrick AQUATIC BIOLOGIST
Mike Stegall AQUARIST

EDUCATION
Angel Rohnke EDUCATION COORDINATOR
Cristie Baker OUTREACH NATURALIST
John DeFillipo OUTREACH NATURALIST
Joan Elder PRESCHOOL EDUCATOR
Megan Ellis OUTREACH NATURALIST
Jonathan Harris EDUCATOR
Yolanda Hawkins EDUCATION ASSISTANT
Rebecca Jones SPECIAL PROJECTS COORDINATOR
Isabel Kelly PRESCHOOL EDUCATOR
Joseph M. McGee OUTREACH NATURALIST
Ann Peden VOLUNTEER SERVICES
Nicole Smith NATURALIST

RESEARCH & COLLECTIONS
Lisa Yager, Ph.D. RESEARCH COORDINATOR
Jeremy Copley COLLECTIONS/RESEARCH ASSISTANT
R.L. Jones, Ph.D. HERPETOLOGIST
Sean McGregor CONSERVATION ASSOCIATE BIOLOGIST
Scott Peyton COLLECTIONS MANAGER
George Phillips PALaeONTOLOGY CURATOR
Kathy Shelton BIOLOGIST
Todd Stack, Ph.D. ICHTHYOLOGIST
LaToya Turner LABORATORY ASSISTANT
Nicholas Winstead ORNITHOLOGIST



Watch for Humps! *DINOSAURS!* are on the move at the Museum! Please make plans to visit, and don't miss the First Tuesday lectures and Prehistoric Fun Fridays. Thanks to the sponsors and volunteers who are making this dynamic exhibit come to life. During the seven and a half months that *DINOSAURS!* will roam the Museum, visitors will learn about Mississippi fossils, extinct animals, and living relatives of the dinosaurs. The StewPot Kids will attend Prehistoric Camp here this summer.

Since January 19, more than 53,000 people have experienced *Bone Up On Bones*, the first medical education exhibit the Museum has brought to Mississippi. The medical community in Jackson helped finance this engaging format for sharing vital knowledge with our audience. More than 200 teachers brought their classrooms to study bone health and learn how to stay healthy. Thanks so much to all of you who made *Bone Up On Bones* possible.

The Mississippi Legislature appropriated level funding from the state's general funds for the Museum for FY 2009. With funding so tight this year, that was about the best we could hope for. No bond monies were appropriated for new projects. Thanks to all our supporters who talked to their legislators on our behalf.

See you at the Museum!

Libby Hartfield
Libby Hartfield
MUSEUM DIRECTOR

STAFF TRANSITION



Jonathan Harris, Educator, began as a Museum intern in January 2007.

At the time, he was pursuing his B.S. in health, physical education, and recreation with a focus in recreation administration. He received his B.S. in May 2007 and

joined the Museum's Education Department fulltime in April 2008. Jonathan is pursuing his M.S. in health, physical education, and recreation with a focus in strength and conditioning. As an Educator, he enjoys engaging students through hands-on programs and especially likes working with reptiles.

NEW STAFF



Andy Sanderson is a Conservation Resources Biologist with the Mississippi Natural Heritage Program staff. He previously worked for the Mississippi Department of Environmental Quality and for a private consulting firm in Tallahassee, Florida. He holds a B.S. and M.S. in biology from Mississippi State University.



Sean McGregor is a Conservation Associate Biologist in Research and Collections. He previously worked as an environmental educator and a raptor handler and trainer. He holds a B.S. in biology from Fort Valley State University and an M.S. in forest resources from the University of Georgia.



Natasha Magee-Woods, Naturalist, is a Ph.D. candidate at Jackson State University. Her dissertation on groundfish in the northern Gulf of Mexico is a collaboration between JSU and the NOAA Southwest Fisheries Center in Pascagoula. Her many awards include being a NOAA Environmental Cooperative Science Center Fellow.

Snake Day:
Mississippi
Style
Don't let this
one slip by.

Snakes alive! Biologist Terry Majure will help you spot the differences between venomous and nonvenomous snakes in Mississippi, separating myth from accurate information about native snakes' value in the ecosystem.

SPEAKER: Terry Majure,
Museum Aquarium Coordinator

SNAKE EXHIBITS: Terry
Vandeventer, Living Reptile
Museum, Terry, Mississippi

Katfishin'
Kids
Teach your
child to fish.

Children ages 5-14 will learn about fish, enjoying step-by-step fishing lessons. Free lunch, T-shirts, and goodies (while supplies last). The Mississippi Department of Wildlife, Fisheries and Parks; the Museum; Mississippi Wildlife Federation; and local Wal-Marts are sponsors. Turcotte Lab is off Hwy 43 at Ross Barnett Reservoir.



QUICK CALENDAR

**Snake Day:
Mississippi Style**
TUE · JUN 3
10AM to 3PM
Presentations at 10AM to 11AM
and 12NOON to 1PM

Katfishin' Kids
SAT · JUN 14
(Turcotte Lab off Hwy 43)
8:30AM to 11AM

Slither, Crawl & Fly
SAT · OCT 25
10AM to 12NOON

**Natural
Christmas Ornaments**
SAT · DEC 6 & 13
10AM to 12NOON



Hot Summer
Nights
Special events
for members!

Visit our website for more details of each exciting summer event.
www.msnnaturalscience.org

Family Night at the Museum
JUN 6 · FRI · 5PM-9PM
Free! for Museum members
RSVP required

Kids' Night Out at the Museum
JUL 18 · FRI · 5PM-9PM
Ages: 5-7, 8-10, 11-13
Cost: \$25 per child /\$10 sibling
RSVP required

A Naturally Beautiful Evening
AUG 15 · FRI · 5PM-10PM
Ages: 21 & over
Cost: \$10 per person
RSVP required

Slither,
Crawl & Fly
Look up, look
down, look all
around!

Touch a snake, examine a bat specimen, observe a spider, and understand the beneficial role they play in the ecosystem. Leave with a new appreciation for these often-misunderstood creatures.



Natural
Christmas
Ornaments
Fun holiday
activities for
everyone

Get in the holiday spirit with these hands-on natural ornament-making sessions. All ages welcome!

Christmas for the Birds
DEC 6 · SAT · 10AM-12NOON
Learn how to create natural ornaments that will help feed the birds during the winter months.

Nature-Made Christmas
DEC 13 · SAT · 10AM-12NOON
Make fun ornaments using natural and recycled objects.

Touring the Past: The Museum's Fossil Displays, Part II

by George Phillips, Paleontology Curator

We continue our exploration of the “Stories in Stone” fossil exhibits – a.k.a. the Fossil Wall.

Our tour picks up in the “Age of Dinosaurs” or the Cretaceous Period, named for the great volumes of chalk and related sediments left on the continents by the extremely high sea level beginning ~144 million years ago. Most of the sea shells in the lower display cases were found in Cretaceous deposits near Chapelville, Mississippi, and are about seventy-eight million years old. Although there were no sea-faring dinosaurs, their bones are found in sediments deposited by shallow continental seas. Either ancient tropical cyclones (with the magnitude of a Hurricane Katrina) or large rivers washed dead coastal dinosaurs out to sea, where their carcasses were slowly



A moon snail “cast” from the Cretaceous Period (66 million years old) collected in chalk deposits on the campus of Mississippi State University.

picked apart by sharks and other scavengers before they came to rest on the sea floor.

Continuing left, we arrive at the Eocene Epoch and note the rare gem that hangs from the ceiling. The small yoke-toothed whale *Zygorhiza kochii*, or “Ziggy” for short, is one of the most complete skeletons of its species. It is named for the celebrated mid nineteenth-century showman Albert Koch, who displayed the first skeletons of Ziggy’s kind from Missouri to Prussia. *Zygorhiza* was one of at least three types of whales that swam the Late Eocene seas some thirty-seven million years ago. The other two were *Basilosaurus* (discussed in Part I) and *Cynthiacetus*, named for the town of Cynthia lying on the northwest edge of Jackson. Only the “Whale Belt” (found in Mississippi and Alabama) and “Whale Valley” (in Egypt) contain any great abundance of Late Eocene whales worldwide.

Moving forward in time to thirty-two million years ago, we find a fossil display dating to the Oligocene Epoch. Two of the most noteworthy fossils here belong to early, distant relatives of the modern rhinoceros. Like dinosaurs, coastal rhino species



Caribou (or reindeer) are a species of deer today found in much colder climates than currently occurring in Mississippi. However, fossil evidence in Lowndes County, Mississippi, indicates that caribou migrated as far south as the northern reaches of the state during the last Ice Age (40,000 years ago). Photo courtesy of US Fish & Wildlife Service.



Saber-tooth Cat - photo by James Patterson

occasionally died in such a way that allowed their bodies to be washed out to sea. The *Metamynodon* skull and *Subhyracodon* lower jaw were both found in the 1980s near Edwards, Mississippi, on the Big Black River.

Finally, we reach the Pleistocene Epoch which is marked by fossils characteristic of river deposits exclusively. Although this time period, also known as the last “Ice Age,” contains no dinosaurs – a common misconception - it contains the remains of other impressive prehistoric animals, like giant ground sloths, giant armadillos, mammoths, mastodons, horses, bison, saber-tooth cats, dire wolves, giant beavers, and many other mammals now extinct.

Interestingly, all the mammalian (and other) species considered indigenous to Mississippi today were living here during the Late Pleistocene. Our state simply had greater diversity prior to the extinction of the larger animals. So, if you really want to re-live Mississippi’s last “Ice Age,” go on a nature hike anywhere in the state and observe our bounty of animal diversity!

Eastern Spotted Skunks Imperiled

by Scott Peyton, Collections Manager

The Eastern Spotted Skunk is a small carnivore, about the size of a squirrel.

It can occupy a variety of habitats, but seems to favor areas with heavy cover for protection from predators. The Spotted Skunk has a wide distribution through much of the eastern and mid-western U.S.

However, in recent decades, Spotted Skunk numbers have declined across their range. They are considered imperiled or critically imperiled in ten states, including Mississippi and neighboring Louisiana. Because of its status in Mississippi, it is listed as one of Mississippi’s Species of Greatest Conservation Need.

The Museum is working to locate populations of Eastern Spotted Skunks in Mississippi. Surveys



Spotted Skunk (bottom) and Striped Skunk (middle and top)

are being conducted throughout the state, focusing on areas where this species has been known to occur and where habitat seems favorable.

Spotted Skunks differ in several ways from the much more common Striped Skunks. Spotted Skunks are much smaller than Striped Skunks, which can weigh up to ten pounds. The coloration of Striped Skunks is extremely variable and can range from almost all white to all black. However, Striped Skunks never have the combination of white spots and multiple broken white stripes. Also, Spotted Skunks are much more agile and secretive than Striped Skunks.

If you see a Spotted Skunk, please contact Scott Peyton at the Museum. Please provide as much information as possible about when and where your sighting occurred. If you find a dead Spotted Skunk (e.g. hit by a car), please contact the Museum as soon as possible so we can retrieve the specimen.

Donation Substantially Increases Museum's Bird Egg Collection

by Nick Winstead, Ornithologist

In January 2008, the Thomas C. Whitfield estate generously donated over 150 sets of bird eggs to the Museum, substantially increasing our holdings to over 800 sets.

These eggs were collected by various people, scattered throughout much of the U.S. and parts of Europe, who held permits to collect bird eggs.

Mr. Whitfield personally collected numerous sets of eggs (a set represents eggs from a single nest), and as many oologists (egg collectors) in his day did, he often traded sets with people around the globe. Most of the sets were collected during the



Sample of eggs to be accessioned into the collection

early decades of the 1900s before the practice fell into disfavor with many in the ornithological and conservation communities. Because over-collecting began to present problems, a permit is now required to collect eggs.

Bird egg collections are one of the most widely useful collection types for a variety of disciplines including toxicology, ecology, systematics, and anthropology. They also prove useful in studies of breeding distribution. One of the most well-known cases where egg collections provided vital data was in the case of eggshell thinning caused by DDE, a breakdown product of the pesticide DDT. Scientists studied eggshell thickness of Brown Pelican and other fish-eating bird egg sets in museums to determine that DDT was responsible for serious declines in these species. Thanks to these studies, DDT was banned and many bird populations have rebounded to healthy levels today.

ONGOING

Come On Outside!

Visit the Museum's Native Plant Garden and nature trails to experience the wonders of the season in Mississippi. You'll find trail markers and signs identifying plants and habitats. So come on outside and discover the rich variety of Mississippi flora!

Fish Feeding

Meet some of our most fascinating aquarium inhabitants, every Tuesday and Friday at 10AM, and Sunday at 2PM.

Creature Features

Scheduled or spontaneous, these informal programs feature live or mounted animals. Scheduled every Saturday at 10AM and 2PM, Creature Features make learning fun!

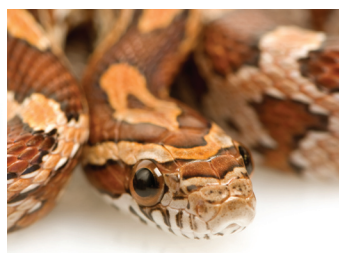
First Tuesdays

Naturalist Lecture Series
On the first Tuesday of the month (except Dec and Jan), the Museum offers lectures addressing a variety of natural science subjects. Unless noted otherwise, the lectures take place from 12NOON to 1PM in the Museum's Rotwein Theater.

Lectures are free to Museum Foundation members or regular admission visitors. Please show your membership card at the gate. Regular Museum fee: \$5 for adults; \$4 for senior citizens; \$3 for children; \$2 for students with teachers. Members also receive a ten percent discount at The Dragonfly Shoppe.

MAY 26 · MON · HOLIDAY
Museum Closed

JUN 3 · TUE · 10AM-3AM · EVENT
Snake Day: Mississippi Style
See live Mississippi snakes on exhibit, and learn from the experts who will be on hand to answer your questions.



JUN 3 · 10AM-11AM & 12NOON-1PM · LECTURES
Snake Day Lectures: De-mystifying MS Snakes
SPEAKER: Terry Majure
Aquarium Coordinator,
Museum of Natural Science

Learn the value of our native snakes and how to distinguish six venomous species from fifty-five non-venomous ones found here.

JUN 6 · FRI · 10AM-12NOON
Fun Friday
Dinosaurs

JUN 6 · FRI · 5PM-9PM
For Members Only: Family Night at MMNS
Free! RSVP required. Visit our website for details.

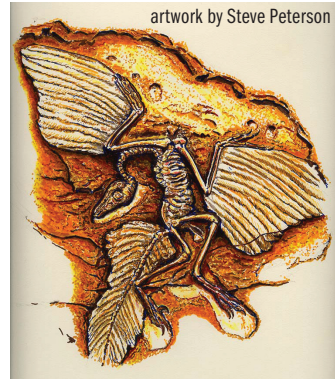
JUN 13 · FRI · 10AM-12NOON
Fun Friday
Fossils



JUN 14 · SAT · 8:30AM-11AM · EVENT
Katfishin' Kids @ Turcotte Lab
Fun fishing at Turcotte Lab, off Hwy 43 at Ross Barnett Reservoir, for ages 5-14, accompanied by adults. Equipment and lunch are free.

JUN 20 · FRI · 10AM-12NOON
Fun Friday
Prehistoric Mammals

JUN 27 · FRI · 10AM-12NOON
Fun Friday
Prehistoric Fish



artwork by Steve Peterson

JUL 1 · TUE · 12NOON-1PM · LECTURE
How YOU Can Prevent Dinosaurs from Going Extinct!!
SPEAKER: John Davis
Retired Science Educator, St. Andrews Episcopal School, and Volunteer Research Entomologist, Museum of Natural Science
"Dinosaur" always means huge and extinct, right? Wrong! Learn how the adventurer who discovered *Tyrannosaurus rex* also uncovered the clue to living dinosaurs. Understand how scientists know there are more dinosaurs living today than in the past. Thrill to amazing discoveries, such as a raptor with four wings. Find out about a society that fights to prevent the extinction of dinosaurs and how you personally can attract, enjoy, and protect them.

JUL 4 · FRI · HOLIDAY
Museum Closed

JUL 8 · TUE · WORKSHOP
Project WILD Teacher Workshop
Located at Clinton Nature Center; call 601.354.7303.

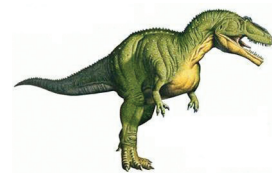
JUL 9 · WED · WORKSHOP
Project WET Teacher Workshop
Located at Clinton Nature Center; call 601.354.7303.

JUL 11 · FRI · 10AM-12NOON
Fun Friday
Prehistoric Insects

JUL 18 · FRI · 10AM-12NOON
Fun Friday
Prehistoric Birds

JUL 18 · FRI · 5PM-9PM
For Members Only: Kids' Night Out at MMNS
Ages: 5-7, 8-10, 11-13
Cost: \$25 per child /\$10 sibling; RSVP required. Visit our website for details.

JUL 25 · FRI · 10AM-12NOON
Fun Friday
Prehistoric Reptiles



AUG 5 · TUE · 12NOON-1PM · LECTURE
How the Dinosaurs Came to the Shores of Mississippi in the Late Cretaceous Period
SPEAKER: Dr. David Dockery
Chief, Surface Geology Division, Mississippi Office of Geology
Did dinosaurs inhabit islands in Mississippi? Yes, according to the geological evidence. During the period in which Mississippi was covered by an ocean, volcanic islands existed in the areas we now know as Jackson and the Delta. Join Dr. Dockery in investigating Mississippi's Cretaceous marine formations and the dinosaur fossils they contain.

AUG 15 · FRI · 5PM-9PM
For Members Only: A Naturally Beautiful Evening
Ages: 21 & over
Cost: \$10 per person
RSVP required. Visit our website for details.

SEP 1 · MON · HOLIDAY
Museum Closed

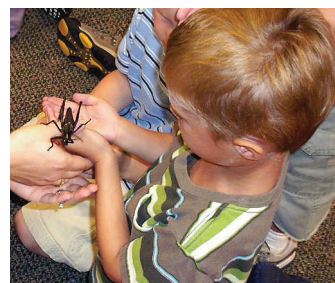


Crayfish: photo by Chris Lukhaup

SEP 2 · TUE · 12NOON-1PM · LECTURE
Mississippi Crawfishes: Moving Beyond Etoufee
SPEAKER: Susan B. Adams, Ph.D.
USDA Forest Service, Southern Research Station, Center for Bottomland Hardwoods Research, Oxford, Mississippi
Crayfish (a.k.a. crawfish, crawdad, or mudbug) live around the world and range in size from smaller than a little finger to big enough to break a person's arm. They vary in color from dull to brilliant. With more than sixty-three species, Mississippi has one of the highest crayfish diversities in the world. Take a brief global tour of crayfish and then come home to Mississippi via discussion of our species, their habitats, conservation issues, and ongoing research.

SEP 11 · THU · 4PM-7PM
Teachers' Back-to-School Night
Teachers of all grades will collect resource materials from the Museum, as well as other agencies and organizations.

OCT 7 · TUE · 12NOON-1PM · LECTURE
TBD



OCT 25 · SAT · 10AM-12NOON · EVENT
Slither, Crawl & Fly
Learn about the creatures that surround us, including snakes, spiders, and bats.



NOV 4 · TUE · 12NOON-1PM · LECTURE
A Tale of Two Rivers: A Look at Two Populations of Yellow-blotched Sawback Turtles
SPEAKER: Will Selman, Ph.D. Candidate
University of Southern Mississippi, Biological Sciences Department
Will Selman's research centers in general on the basking behavior of turtles and life history/ecology of the Yellow-blotched Sawback, which is endemic to the Pascagoula River system.

He will talk about his research pertaining to two populations of Yellow-blotched Sawback Turtles (one from the Leaf River and one from the Lower Pascagoula River) and their responses to Hurricane Katrina, as well as to recreational boating.

NOV 27 & 28 · THU & FRI
Museum Closed

DEC 6 · SAT · 10AM-12NOON · EVENT
Christmas for the Birds
Create natural ornaments to help feed the birds in winter months. Pre-registration required; all ages invited.

DEC 13 · SAT · 10AM-12NOON · EVENT
Nature-Made Christmas
Enjoy the beauty of the season by making hand-crafted ornaments from natural and recycled objects. Pre-registration required; all ages invited.

DEC 24 & 25 · WED & THU · HOLIDAY
Museum Closed
**Dates are subject to change. Please call the Museum at 601-354-7303 to confirm an event.*

ONGOING

First Saturdays

Audubon Bird Walks
On the first Saturday of the month (except Dec and Jan) join experienced birders and Jackson Audubon Society members for a walk on the wild side.

Bird walks for family groups and beginners are from 8AM to 10AM at Lefleur's Bluff State Park Campground. Fee: \$3. For more information, call Mary Stevens at 601.956.7444.

TEACHERS

WET and WILD CEU Credits for Teachers

The Museum offers two environmental education programs, Project WILD and Project WET, with CEU credits available. For details, contact Angel Rohnke or Rebecca Jones at 601-354-7303.



Teacher Resources

To schedule a workshop or field trip, reserve a resource kit, download classroom materials, or learn more about how our Museum can help meet your classroom needs, call 601-354-7303 or visit www.msnaturalscience.org.

PRESCHOOL: The Museum's "hands-on" Preschool Discovery Room is designed specifically for pre-kindergartners, ages 3-5.



Visitor Access

PRESCHOOL CHILDREN
MON-FRI 1-4PM
SAT 9:30AM-12NOON & 1-4PM
SUN 1-4PM

TIME FOR TWOS (AGES 2 & UNDER)
2nd TUE 1-4PM

STORY TIME (AGES 3 TO 5)
WED 1:15, 2:15, & 3:15PM (AUG-MAY)
TUE AND THU 10:15 & 11:15AM (JUNE-JULY)

Reserved Group Access

MON-FRI 9, 9:45 & 10:30AM (AUG-MAY)
WED & FRI 9, 9:45 & 10:30AM (JUNE-JULY)

MAY CLASS
"Like Water? Live in a Marsh!"
Children will learn about wetland creatures, the many animals that live in or near water, and understand differences between fresh and salt water and a marsh and a swamp.



JUNE-AUG CLASSES
"Forever Fascinating - Dinosaurs!"
Fossils are the petrified remains of plants and animals. Children will understand that the remains of dinosaurs are very special fossils and will appreciate the characteristics and diversity of dinosaurs.

SEPT/OCT CLASSES
"Check Out My Moves!"
Children will understand the variety of ways in which animals move and will experiment with several of those movements.

NOV / DEC CLASSES
"Legs! Who Needs Them?"
Children will have fun learning about the importance of earthworms in the food web and to farmers and gardeners. Observing that earthworms (invertebrates) do not have backbones, children will recognize earthworm tracks.

* Call Joan Elder for reservations. (601-354-7303 ext. 136)



The Preschool Room is open when a staff member or volunteer is available. The schedule is subject to change. Please inquire.

Trading Animals and Information: Partnerships Enhance Aquariums

by Karen Dierolf, Aquatic Biologist

Partnerships and cooperative agreements are important to the Museum's aquariums.

Although the aquarium staff collects almost all of the fish on display in the aquariums, sometimes we need a little extra help obtaining special animals. That's when we call on other public aquariums in the Southeast for help.

Public aquariums very often collect a few more animals than are needed for display. Stress from collecting, transportation, and quarantine can reduce these numbers, but when everything goes well, there may be some extra specimens. We can then offer to trade these extra animals with another public aquarium for something we need. The Museum has obtained many special specimens through trade in this manner. Some examples are our large, white catfish "Lucie Blue" from the Mississippi River, the red snapper from the Mississippi Sound, some of our alligators from the Mississippi coast, and several darters from Tennessee.

The Museum aquariums wish to extend many thanks to the Estuarium on Dauphin Island, Alabama, for its generous donation of a Green Moray Eel. Green Moray Eels are actually not green. Their skin is a blue-to-brown color, and their abundant slime is yellow. These colors combine to make eels appear green. You can usually catch a glimpse of



Green Moray Eel

this beautiful fish hiding in the sunken boat in the Mississippi Sound aquarium.

Our aquarium staff trades information as well as animals. We have received invaluable advice and information from other public aquariums and organizations on a wide range of subjects, including animal husbandry, quarantine procedures, fish disease and parasites, animal diets, plant pest control, water quality, filter maintenance, and even window cleaning.



- | | |
|--|--|
| ALABAMA
Estuarium, Dauphin Island | J.L. Scott Marine Education Center, Biloxi
Pascagoula Alligator Farm, Pecan
Pete Floyd, Pascagoula |
| ARKANSAS
Arkansas Fish Hatchery
Donald Holland | NEBRASKA
Aksarben, Gretna |
| LOUISIANA
Aquarium of the Americas,
New Orleans | TENNESSEE
Tennessee Aquarium,
Chattanooga
Conservation Fisheries, Inc.,
Knoxville
Tennessee Department
of Environment &
Conservation, Knoxville
Tennessee Wildlife Resources
Agency, Morristown |
| MISSISSIPPI
Tommy Bordages,
Bay St. Louis
David Hallway, Belzoni
Department of Wildlife,
Fisheries and Parks
Gulf Coast Research Lab -
Red Snapper Unit,
Ocean Springs | |

Alligator - photo by James Patterson

We also provide our expertise to other facilities and aquariums and have developed close working relationships and friendships with many of the staff at other public aquariums in the Southeast. The Museum staff would like to thank the Mississippi Department of Wildlife, Fisheries and Parks and the other aquariums, organizations, and people with whom we are currently working or have worked through the years. *See list below.*

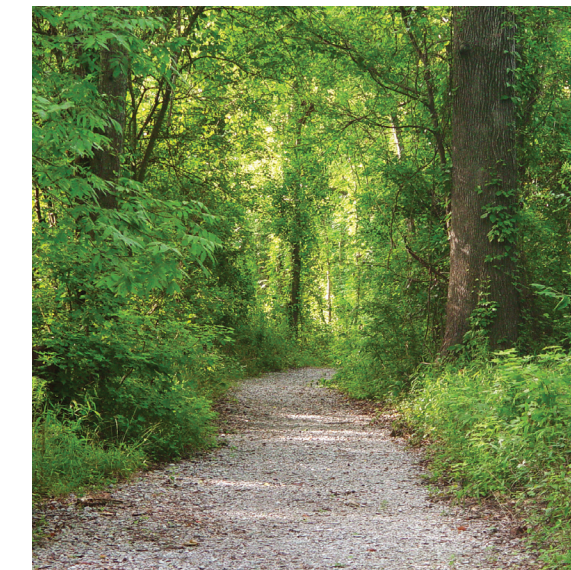
New Outpost Camp Awaits Scouts at LeFleur's Bluff

by Andrew Whitehurst, Scenic Streams/Natural Areas Coordinator

LeFleur's Ridge, a new outpost camp site for Scouts, is ready for visitors.

Set inside Central Mississippi's lush and conveniently located LeFleur's Bluff State Park, the camp was developed to provide a short-term camping experience close to home.

A quarter-mile hike from the Mayes Lake end of the Purple (Pearl River) Trail leads to the site which will be used primarily in the cooler seasons of the year. The outpost location gives the feeling of isolation from the rest of the park yet provides a relatively easy pack-in camping opportunity for



younger Scouts. Because of the proximity to Mayes Lake and the presence of good boat ramps on the Pearl River, canoeing can be part of the camping experience if troops bring canoes.

Members of the Museum trails staff presented the outpost idea to the manager of LeFleur's Bluff State Park and the executive director of the Andrew Jackson Council last summer. The concept was to develop a site similar to Scout Island in New Orleans' City Park. Scouts in the New Orleans area reserve the controlled-access island in the City Park lagoon system for camping or day events.



Troops who camp at LeFleur's Ridge will conduct service projects in the park and visit the Museum. Eagle Scouts already have made two major improvements: installing bat houses and a picnic table with fire ring.

*LeFleur's Bluff State Park is maintained and managed by the Mississippi Department of Wildlife, Fisheries and Parks.

LEFLEUR'S RIDGE

Rate: \$2 per tent plus \$25 waste management fee.

Availability: By reservation with LeFleur's Bluff State Park office, 601-987-3923; Scout Tour Permit required.

Cooking: Open fires or cook stoves.

Water: Must be carried in; tap water available at trailhead one quarter mile from camp site.

Sanitary Facilities: Portable toilets.

Security: Park gates are locked each night.

Note: Camp site closes during high water.

\$100,000-\$200,000

Abe Rotwein Family
The Chisholm Foundation
Regions Bank
Deposit Guaranty/AmSouth
Foundation
Ergon
Bryant Mather
Mississippi Museum
of Natural Science Foundation
U.S. Fish and Wildlife Service

\$50,000-\$100,000

BellSouth
Magalen O. Bryant
& Tara Wildlife Management
Community Foundation of Greater Jackson
Chevron
Entergy
Environmental Protection Agency
Friede Goldman
Gannett Foundation/The Clarion-Ledger
Gertrude C. Ford Foundation
Phil Hardin Foundation
Mr. & Mrs. Dudley Hughes
Irby Companies
Richard McRae, Jr., Family
Mississippi Chemical Corporation
Mississippi Farm Bureau Federation
National Fish and Wildlife
Foundation/Shell Marine Habitat Program
Dr. & Mrs. Steve Zachow

**Steadfast
Supporters**

Without loyal patrons and sponsors, our work would be impossible.

Special thanks go to the following for their support of the current exhibit:

"DINOSAURS!"

Mississippi Department of Wildlife, Fisheries and Parks

MMNS Foundation

Gertrude C. Ford Foundation

Janet and Luther Ott

Paul T. Benton

Chisholm Foundation

Nissan of North America, Inc.

Trustmark National Bank

(see donor list page 11)

\$25,000-\$50,000

Blue Cross & Blue Shield of Mississippi
Bureau of Land Management
Delta and Pine Land Company
Foundation for the Mid South
Georgia-Pacific Corporation
International Paper Foundation
Jackson Convention & Visitors Bureau
Merrill Lynch
Mississippi Power Company
Mississippi Valley Gas Company
Molpus Woodlands Group
Paul T. Benton
Plum Creek Foundation
Pruet Companies
Trustmark National Bank
U.S. Department of Transportation
U.S. Forest Service
Mr. & Mrs. William J. Van Devender
Walker Foundation
Dr. & Mrs. Julian Wiener
Weyerhaeuser Company Foundation
Yazoo Mississippi
Delta Levee Board

\$10,000-\$25,000

The Armstrong Foundation
BancorpSouth Foundation
Betsy & Wade Creekmore
Feild Cooperative Association
Howard Industries, Inc.
Mississippi Arts Commission
Mississippi Forestry Association
Mississippi Forestry Foundation
National Geographic
Society Education Foundation
Nissan of North America, Inc.
Sanderson Farms
Soterra LLC
Sprint PCS/US Unwired
St. Dominic Health Services
The Straddlefork Foundation
Wild Turkey Federation

New Members/Donors

Corporate
(\$5,000 OR MORE)

Paul T. Benton

Sustaining
(\$1,000 OR MORE)

Dr. Ronald A. Javitch
Betsy & Wade Creekmore

Donor
(\$250 OR MORE)

Terry & Deanna Ellis
Eddie L. Pope
Dan Smith & Kristi
Sather-Smith
Granville Tate, Jr. & Sue Allen Tate

Friend
(\$100 OR MORE)

Ruth & Murphy Adkins
Gerald & Elizabeth Barber
David R. Bowen
Liz & Steve Brandon
LeAnne & Allen Brewer
Mr. & Mrs. Ramon Callahan
Sidney & Holt Crews
Sean Wesley Ellis
Jane & Ed Emiling
John & Ann Fournet
Dr. Nola Gibson

Ernest A. Klatt, Jr.
Don & Mary Sue Mitchell
Mr. & Mrs. Maurice A. Murray
Ruth & Tom Pullen
William B. Stripling
Ed Swiatlo
Stephen L. Thomas
Harriet & Aaron Trubman
Dr. & Mrs. John D. Wofford

Family
(\$50 OR MORE)

Alex Abel
Sarah Adams
Trish Anderson
Pamela Bales
Eric Balfour
Dee Ball
Dr. & Mrs. Henry Barber
Don & Heidi Barney
Danielle & Mike Batten
Taryn Bennett
Kelly & Jim Blackwood
Rachel Bowman
Maya & David Buford
Ben & Cindy Burge
Sarah Buxbaum
Ryan Cole
Keisa Cromer

John & Helaina Damon
Marisa Davidson
Dave Dear
Rhonda & Edwin Dodd
Tara Ellis
Carol Evans
David Felder
Virginia J. Payne Foreman
Daniel & Quejet Forrester
Suzanne & Jim Freedman
Joe & Amanda Garcia
Renata D. Gil
Serguei Goupalov
Marilyn Graves
Karla Haag
Kat Hayman
Susan Herring
Jack & Melissa Hill
Anna Hutcheson
Ann Hutchinson
Kristi & Tim Jacobs
Jaala & Queen J. Jones
Adre' Jordan
Greg Kelly
Emily Kines
Arthur Knight
Monica & Steve Kornegay
Miriam Lamar
Jon Lindemann

Teresa Lynn
Melanie McLeod
Rachel Misener
Tonja Murphy
Shawn O'Mara
Michelle Parker
Chris & Stacie Perry
Yolanda R. Powell
Marcie Ralston
Allison & Danny Ruhl
Joey & Connie Shelton
Kathy Sikes
Jason & Paige Smith
Jeff Smith
Mairy Snow
Amy Spencer
Lori Stewart
Rusty & Sarah Toler
Lynn Watson
Monica Wimberley
Christi Wood

Individual
(\$35 OR MORE)

Skipper Anding
Brian Pepper
Peyton Prospere
Donna Roberts
Shareen W. Schafer

Exhibit Sponsors
Dinosaurs!

Gertrude C. Ford Foundation
Janet and Luther Ott

Paul T. Benton
Chisholm Foundation
Nissan of North America, Inc.
Trustmark National Bank
Brunini, Grantham, Grover & Hewes
Dr. & Mrs. Steve Zachow
Jackie & Avery Rollins

Bone Up On Bones

Blue Cross & Blue Shield of MS
The Bower Foundation
Baptist Health Systems
Feild Cooperative Association
Methodist Rehabilitation Center
Sanderson Farms
St. Dominic Health Services
Marianne & Jack Dempsey
Dr. & Mrs. Lawrence Haber
Mississippi Chiropractic Association
Mississippi Sports Medicine

Dr. & Mrs. Don Q. Mitchell
Ann Myers, M.D.
Jackie & Avery Rollins
Carol & Cavett Taff
Dr. & Mrs. Steve Zachow

BioBulletin

Cellular South Foundation
Education Outreach
Paul T. Benton
Foundation for the Mid South
The King's Daughters and Sons Circle
Number Two
The Phil Hardin Foundation
Yazoo Mississippi Delta Levee Board
Janet & Luther Ott
Charitable Fund of the Community Foundation of Greater Jackson

Other Contributors

Les Amies Luncheon Club



FOUNDATION

The Mississippi Museum of Natural Science Foundation is the lifeblood of our Museum, providing man power, financial assistance, and moral support. The Foundation Board of Directors invites you to join today!

OFFICERS

Chris Zachow
PRESIDENT
Alex Alston, Jr.
VICE PRESIDENT
Janice Larson
SECRETARY/TREASURER

BOARD OF DIRECTORS

George Allen	Janice Larson
Alex Alston, Jr.	Jennie McIntosh
Paul Benton	Ashley Parker
Betsy Creekmore	John Rings
Opal Dakin	Avery Rollins
Marianne Dempsey	Rosalie Rotwein
Halla Jo Ellis	Olye Brown Shirley
Sean Wesley Ellis	Catchings B. Smith
Dick Hall	Sheila Smith
Dick Harding	Scott Steele
Libby Hartfield	Chris Zachow
Matt Holleman, III	

BENEFITS OF MEMBERSHIP

All members enjoy free admission to the Museum, invitations to members-only events, a subscription to our newsletter, and discounts at the Dragonfly Shoppe. Higher levels of membership receive additional benefits, such as public recognition of their contributions, additional admission passes, and even the private use of Museum facilities. And all memberships entitle you to free admission to more than 200 other museums nationwide through a reciprocal membership program.

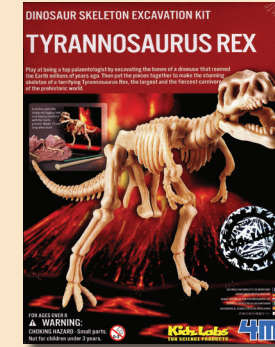
Call 601.354.7303 for more information.

DRAGONFLY SHOPPE

Each month, the Museum store offers a thoughtful selection of gift items that coordinate with current exhibitions and educational programming.

Featured this season:

DINOSAUR SKELETON EXCAVATION KIT
\$10.00
(that's \$10.70 including 7% sales tax)



ROAR-A-SAURUS

\$6.99
(that's \$7.48 including 7% sales tax)



Add \$3.50 shipping and handling for mail orders.

Visit the Dragonfly Shoppe for Natural Gift Selections.

SHOPPE HOURS
MON-SAT 9AM-4PM
SUN 1-4PM

The Dragonfly Shoppe is a Mississippi Museum of Natural Science Foundation sponsor.

MISSISSIPPI BIRD SONGS CD

by William H. Turcotte

\$20.00
(that's \$21.40 including 7% sales tax)



Exciting News: The Mississippi Museum of Natural Science has just re-published (in CD format) *Mississippi Bird Songs*, recorded by Bill Turcotte, a forty-year veteran of the state Game and Fish Commission, who devoted most of his life to the study of birds and all kinds of native Mississippi wildlife.

Mississippi Bird Songs is a collection of 113 calls and songs of birds found in the Mississippi. First published on cassette in 1985, this two-CD album comes with a twenty-page booklet which describes the various songs and calls of each bird on the CD. Each recording is indexed for easy access, and the habitat and status of each bird are listed.

Join MMNS Today! The Mississippi Museum of Natural Science Foundation was established to support the mission of the Museum through fundraising and volunteer efforts. We invite you to join us in preserving the best of Mississippi's natural world. Individual memberships start at \$35.

Volunteer Notes

by Ann Peden, Volunteer Services

Dedicated volunteers are vital in helping the Museum fulfill its mission.

Volunteers prove their dedication time and again, and several special ones have recently marked milestones of service. John Davis, Judith Davis, Halla Jo Ellis, Billie Ellison, Peter Kuchirka, Lou Moore, Joy Rushing, and John Suedel have reached the 1,000-hour mark and keep going strong! Joy Rushing, John Davis, and Halla Jo Ellis, in fact, are now above 2,000 hours of service.

We also congratulate and thank the following volunteers:

Ellen Giudice, Gay Russell, 100 hours; Beverly Alexander, 150 hours; Flo Scanlon, 200 hours; Clyde and Barbara Hare, Bill Hayes, Martha R. Smith, 300 hours; Peggy Lay, 400 hours; Carolee Kuchirka, 750 hours.

Besides wonderful learning opportunities and invaluable camaraderie, volunteers receive certificates at each milestone of service, a volunteer pin at 150 hours, a bag with the Museum dragonfly logo at 300 hours, and Dragonfly Shoppe gift certificates at 500 and 750 hours.

At 1,000 hours, the volunteer's name is added to the recognition board in the Museum entrance area. Volunteer applications are available on-line at the Museum website or can be mailed by request.

Join us and start logging hours of education and fun! Volunteer training for the *DINOSAURS!* exhibit will be May 20, from 10AM to 12NOON.



Ann Peden - photo by James Patterson

MISSISSIPPI
Museum of
Natural
Science

2148 RIVERSIDE DRIVE
JACKSON, MS 39202-1353
WWW.MSNATURALSCIENCE.ORG

DEPARTMENT OF WILDLIFE, FISHERIES AND PARKS

The mission of the Mississippi Museum of Natural Science is to promote understanding and appreciation of Mississippi's biological diversity through collections, research, scientific databases, education, and exhibits; and to inspire the people of our state to respect the environment and to preserve natural Mississippi.

NON-PROFIT ORG.

U.S. POSTAGE

PAID

JACKSON, MISS.

PERMIT NO. 932

Come discover
our 100,000-gallon aquarium network, more than 70,000 square feet of exhibits, over 300 acres of forest and streams, and 2.5 miles of walking trails.

Don't miss
our internationally recognized traveling exhibits, our engaging educational programs, our "hands-on" Preschool Discovery Room, and the ever-popular Dragonfly Shoppe.

See It All

at the Museum!



The Mississippi Museum of Natural Science is located on I-55 at Lakeland Drive.

—within Lefleur's Bluff State Park—



From Interstate-55, take Exit 98B heading east on Lakeland. Turn south onto Highland Drive and left at the Park entrance. Pay admission at the gatehouse.

MUSEUM HOURS MON-FRI 8AM to 5PM

SAT 9AM to 5PM

SUN 1PM to 5PM

ADMISSION Adults: \$5
Children Under 3: FREE

Children 3-18: \$3
Members: FREE

Senior Citizens 60 and over: \$4

School Groups of 10 or more: \$2/person

CALL 601.354.7303

VISIT WWW.MSNATURALSCIENCE.ORG