



# Bee Lake 2017

## REEL FACTS

Nathan Aycock - Fisheries Biologist

[NathanA@mdwfp.state.ms.us](mailto:NathanA@mdwfp.state.ms.us) (662) 759-6444

**General Information:** Bee Lake is a 1,400 acre oxbow lake in Holmes County. It is one of the largest natural lakes along the bluff line between the flatlands of the Delta and the forested uplands of the Yazoo River Basin. Historical data suggests that the lake was formed by the Ohio River. The lake is long, roughly 14 miles from its upper to lower end. The lake has an average depth of 5 - 6 feet.

**Location:** On Highway 49E in Thornton, MS about 25 miles north of Yazoo City and 35 miles south of Greenwood.

**Fishery Management:** Largemouth Bass, crappie, catfish, and bream

**Purchase a Fishing License:** <http://www.mdwfp.com/license/fishing-license.aspx>

### Regulations

- 30 crappie per day.
- 10 Largemouth Bass per day.
- 100 bream per day.
- No limit on catfish.



### Fish Stockings

#### 2016

105,000 Bluegill  
1.5 in.

#### 2015

55,000 White Crappie  
2 in.  
250,000 Bluegill  
1.5 in.

#### 2014

105,195 White Crappie  
2 in.  
150,000 Bluegill  
2 in.  
28,000 Bluegill  
1.5 in.

#### 2013

53,000 White Crappie  
2 in.  
37,264 Magnolia Crappie  
2 in.  
188 Alligator Gar  
9 in.  
178,750 Bluegill  
2 in.

### Sportfishing Tips

#### Largemouth Bass

- Try areas around brush tops, fallen logs and cypress stumps.

#### Crappie

- In the spring fish structure along the banks with minnows or jigs. During summer and winter months try trolling through the deeper areas of the lake.

#### Bream

- Fish areas with structure and around cypress knees in water less than 5 feet deep with crickets or red worms, especially in the late spring and summer.

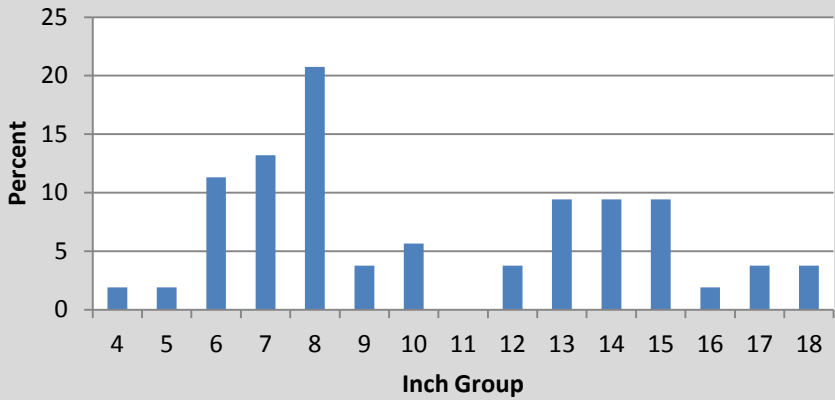
#### Catfish

- Fish shallow mudflats near the cypress trees with night crawlers, chicken livers, or stink bait.

**Below:** Results from the 2016 electrofishing survey on Bee Lake. Bee Lake is sampled in the fall every 2 to 3 years. Catch rates for Largemouth Bass, crappie, bream, and catfish showed a slight increase from 2015 numbers. In addition, catch rates for non-game fish showed a slight decrease, making up only 18.5% of the total catch for 2016.

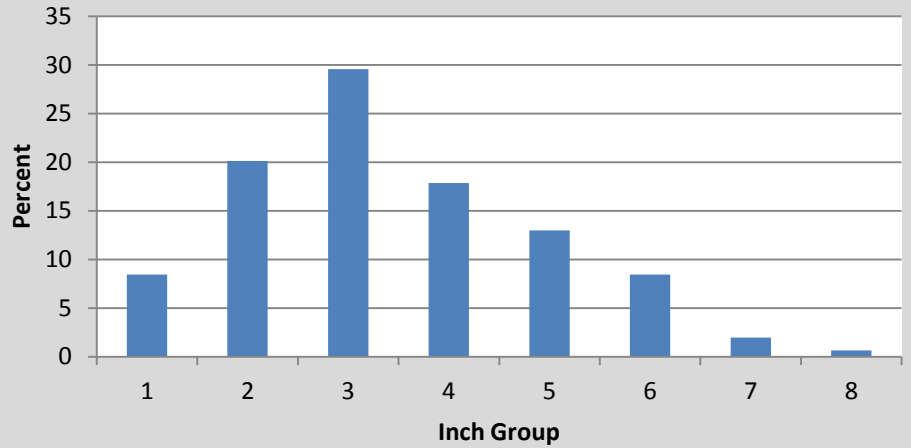
Species	# of fish collected	% of sample	Average Length (inches)	Maximum Length (inches)	Average Weight (pounds)	Catch Rate – Adult fish (fish/mile)
Bluegill	308	43.9	4	8.7	0.3	76.5
Longear Sunfish	122	17.4	3.3	4.7		28.8
Smallmouth Buffalo	75	10.7	17.3	24.2		24.4
Largemouth Bass	53	7.6	11	18.8	1.3	14.1
White Crappie	29	4.1	8	13	0.6	6.1
Warmouth	19	2.7	4.7	8.1	0.3	4.7
Channel Catfish	19	2.7	13.9	22.7	2.7	4.5
Spotted Gar	19	2.7	22.8	30.3		5.7
Freshwater Drum	16	2.3	13.8	20.5		5.1
Bigmouth Buffalo	12	1.7	19.6	25.8		3.3
Redear Sunfish	10	1.4	5.1	8	0.2	3.3
Orangespotted Sunfish	5	0.7	2.4	2.6		0
Common Carp	4	0.6	24	28		1.4
Black Crappie	3	0.4	10.2	13.2	1.4	0.7
White Bass	2	0.3	11.4	13.4	1.2	0.7
Silver Carp	2	0.3	26.7	27.3	7.3	0
Longnose Gar	1	0.1	52.8	52.8		0.2
Shortnose Gar	1	0.1	24.3	24.3		0
Green Sunfish	1	0.1	4.1	4.1		0.5

## Largemouth Bass



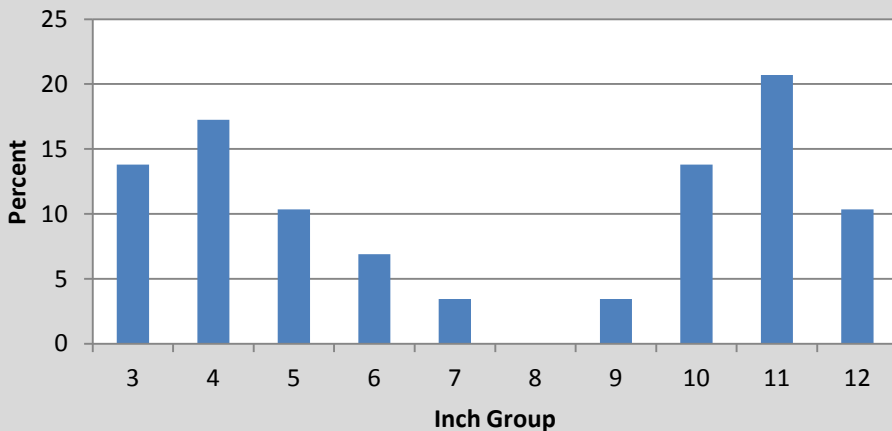
**Left:** Largemouth Bass length distribution for Bee Lake from the 2016 electrofishing survey. Bass total lengths ranged from 4 to 18 inches, with a high number of 6, 7 & 8 inch fish indicating a good spawn in 2016.

## Bluegill



**Right:** Bluegill length distribution for Bee Lake from the 2016 electrofishing survey. The majority of Bluegill ranged from 2 to 6 inches in total length with very few 7 inches and above.

## Crappie



**Left:** Crappie length distribution for Bee Lake from the 2016 electrofishing survey indicating proportionally high numbers of young fish and mature fish but few fish in the 6 to 9 inch range.



**Left:** Bee Lake is home to multiple bass tournaments each year. Anglers come from all over the state to join in some great bass fishing at a beautiful Delta oxbow.

**Below:** Aerial view of the Bee Lake watershed. The primary land use around Bee Lake is row crop agriculture. Extensive work has been done in past years to improve the water quality in Bee Lake.

