



Pascagoula River Marsh 2017

REEL FACTS

Stephen Brown – Fisheries Biologist
stephenb@mdwfp.state.ms.us

General Information: The Pascagoula River marsh is 2500 acres of tidal creeks, canals, bays, and streams from the confluence of the East and West Pascagoula Rivers downstream to the Gulf of Mexico.

Location: The Pascagoula River marsh is located in Jackson county.

Fishery Management: Largemouth Bass, bream, crappie and catfish

Purchase a Fishing License: <http://www.mdwfp.com/license/fishing-license.aspx>

Amenities

Boat ramp locations

- Shemp's Fish Camp located on Roy Rd. in Gautier
- Robert's Fish Camp located on Robert's Rd in Escatawpa
- 18 other ramps can be found on the MDWFP Ramp Access webpage <http://www.mdwfp.com/fishing-boating/ramps-piers.aspx>

Creel and Size Limits

- Black Bass: 10 per day per angler. 12" minimum length
- Crappie: 30 per day per angler
- Bream: 100 per day per angler
- Catfish: No limit.

Regulations

- Buffalo, carp, gar, catfish, shad and bowfin may be taken throughout the year with a bow and arrow, crossbow, spear or gig. However, catfish may not be taken with a spear or gig from May 1 to July 15.
- Hand grabbing season for catfish is open May 1 to July 15 each year
- A freshwater fishing license is required when fishing north of I-10, and either a saltwater or a freshwater license is valid between the Hwy 90 and I-10 bridges in the Pascagoula Marsh. A saltwater license is required when fishing south of the Hwy 90 Bridge.

Fishing Tips

Crappie

Target shallow areas with Cypress knees along the shoreline in bayous during the spring.

Largemouth Bass

Fish any areas with heavy cover or structure (such as sunken logs) below the water surface.

Catfish

Use trot lines or limb lines overnight. Use a pungent bait such as liver to attract catfish.

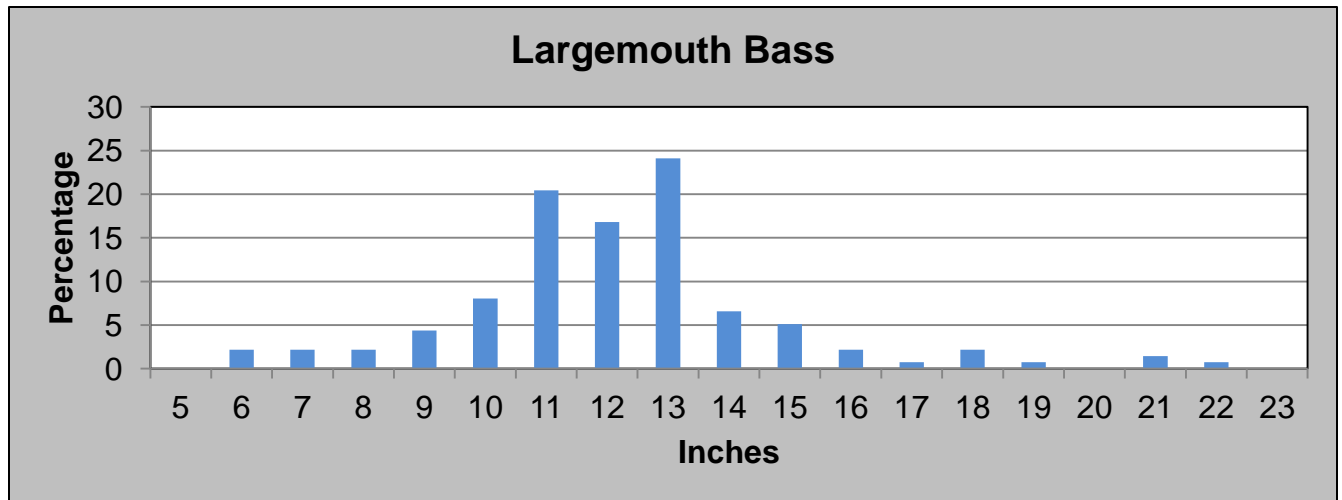
Bream

For Redear Sunfish, Redspotted sunfish, and Bluegill fish areas along the bank with underwater vegetation.

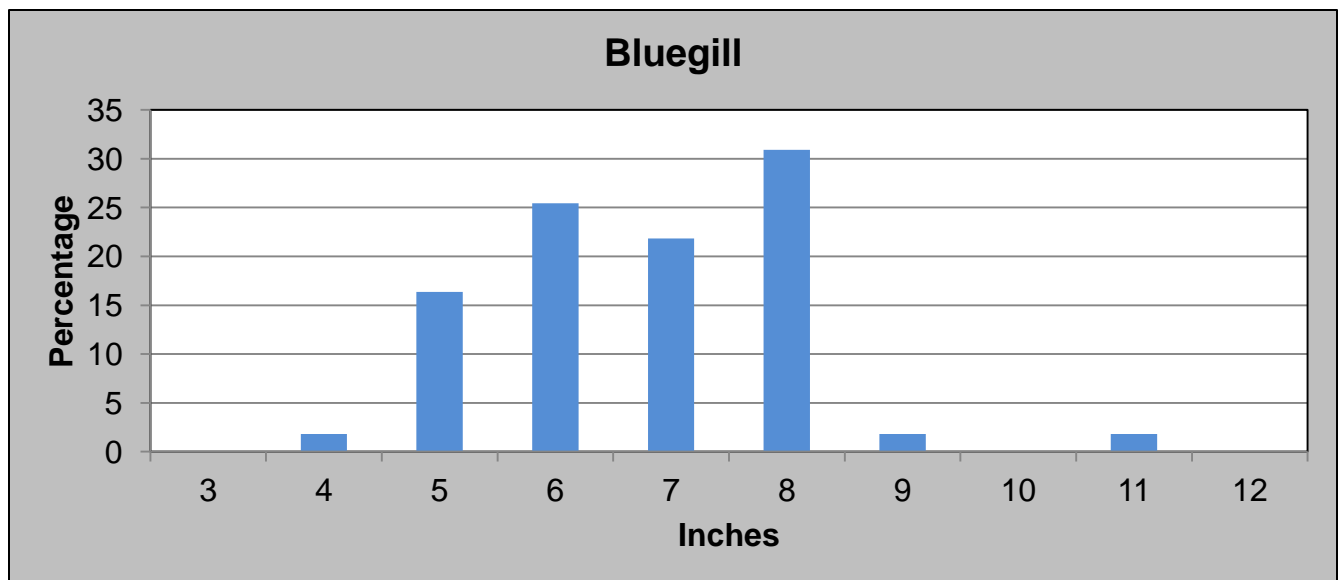
Below: Results from the 2015 fall electrofishing survey conducted in the marsh.

Species	Number	% of sample	Average Length (inches)	Maximum Length (inches)	Catch Rate – Adult fish (fish/mile)
Chain Pickerel	1	0.4	20.6	20.6	0.5
Channel Catfish	1	0.4	17.0	17.0	1.0
Warmouth	7	2.6	5.5	7.7	5.3
Bluegill	55	20.6	6.2	10.0	46.0
Redear Sunfish	61	22.8	6.8	8.4	49.2
Red Spotted Sunfish	5	1.9	4.5	5.8	3.4
Largemouth Bass	137	51.3	11.7	21.2	104.3

Below: Length distribution of Largemouth Bass collected during fall 2015 electrofishing.



Below: Length distribution of Bluegill collected during fall 2015 electrofishing.

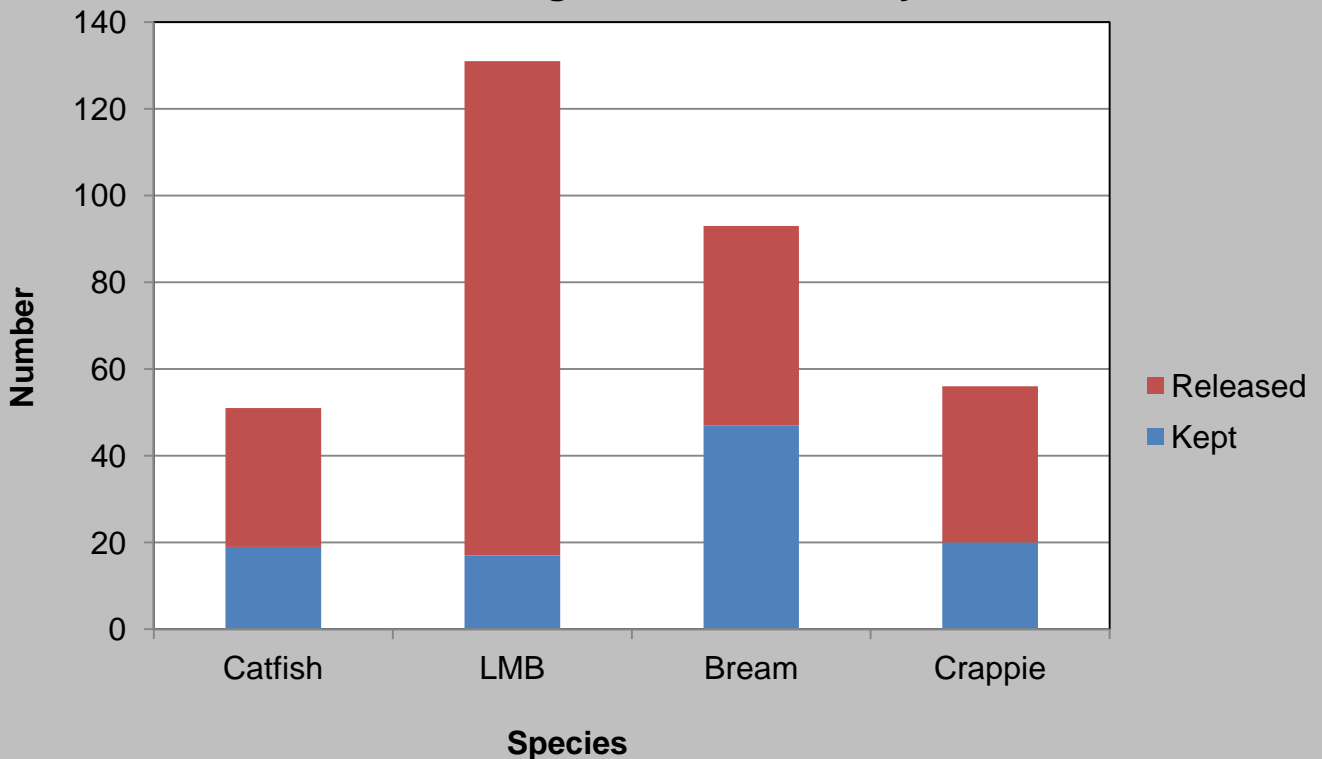


Right: The state record Striped Bass was caught in the West Pascagoula River Marsh. The trophy Striper weighed 39.6 pounds and measured 40.25 inches total length. Mr. Rocky Rawls caught her on 32 lb. test line while bait casting with live bull minnows in March of 2016.



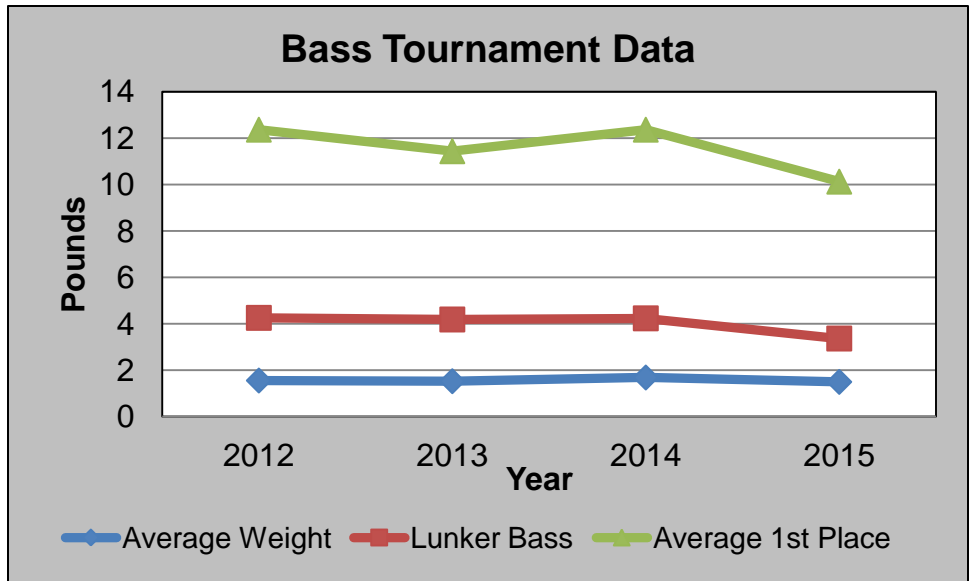
Below: Angler catch summary from the 2015 creel of the Pascagoula Marsh. This data was collected at the ramp located at Robert's Fish Camp on the East Pascagoula River. It shows that most fish species have a fairly even catch:release ratio, with the exception of Largemouth Bass (LMB). This is due to the overwhelming number of LMB that are below the 12 inch minimum length limit established for the Pascagoula River and Marsh.

2015 Angler Catch Summary

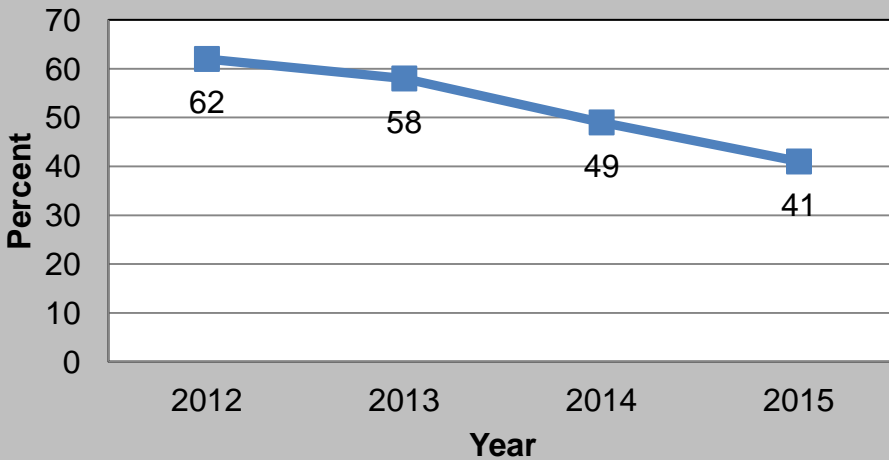


The Pascagoula Marsh is a popular location for Bass Tournaments. Since 2012, results from 15 - 30 tournaments have been summarized annually.

Right: The average first place winning weights ranged between 10 and 13 pounds. The average bass weighed-in was less than 2 pounds, and the lunker bass has been around 4 pounds.

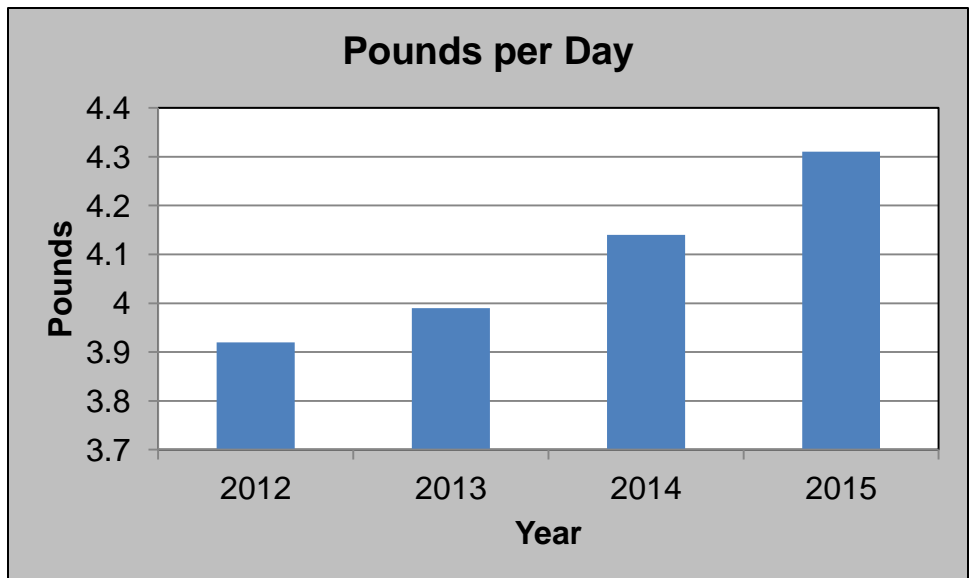


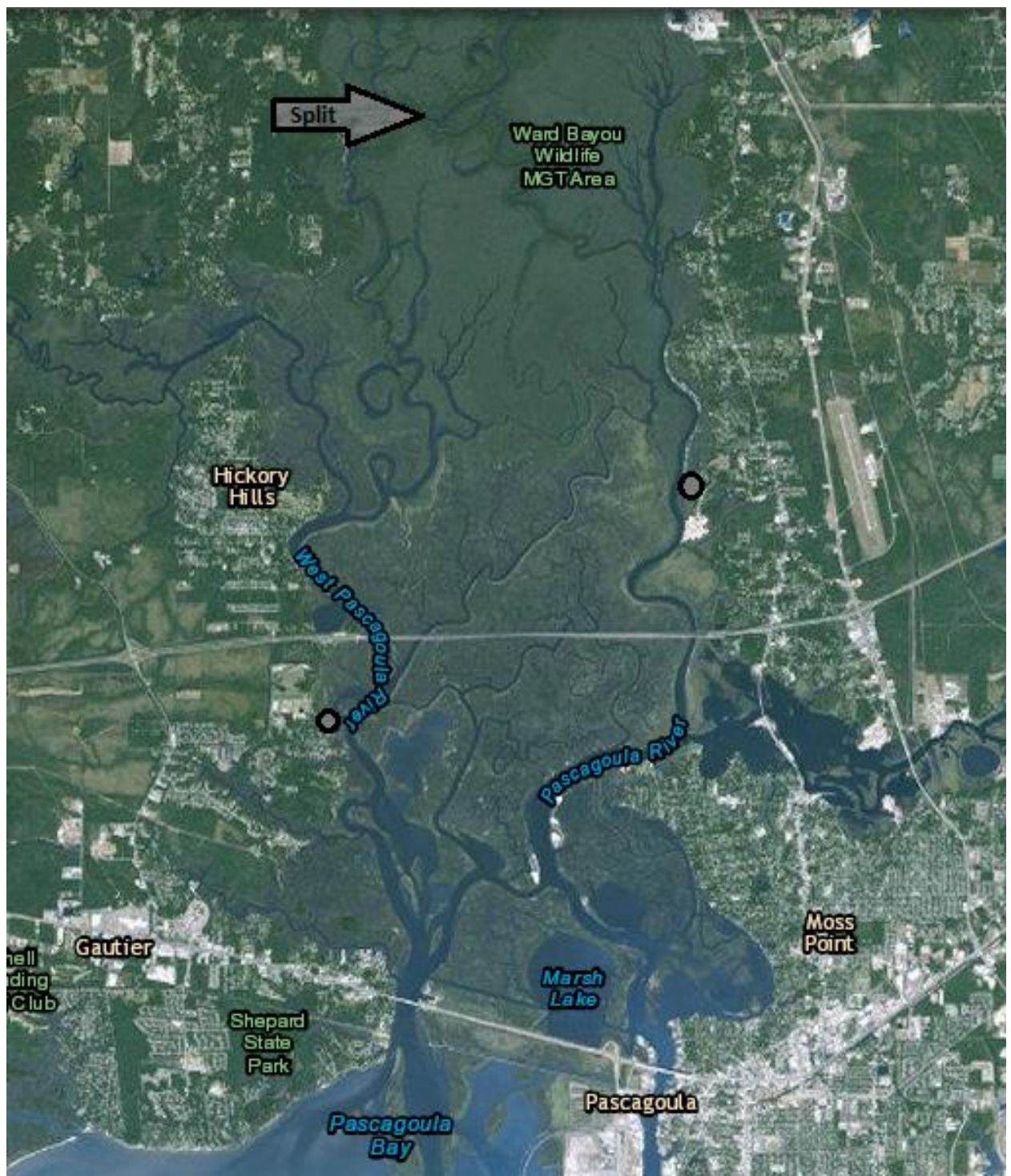
Angler Success



Left: Angler success is the percentage of anglers who weighed-in a five fish limit. The data values are displayed on the graph.

Right: The average pounds of bass weighed-in per angler day by tournament anglers has increased from 3.9 to 4.3 pounds.





Above: Satellite image of the Pascagoula Marsh. The marsh originates where the Pascagoula River splits into the East and West rivers. The marsh ends at Pascagoula Bay, which leads into the Gulf of Mexico. The circles indicate the location of two easily accessible public boat ramps. Shemp's ramp is on the West Pascagoula river and Robert's Fish Camp is on the East Pascagoula River. Both locations provide easy entry into the marsh.

The marsh is filled with twisting bayous that will lead you deep into grass beds of the salt marsh. It is highly recommended to keep a working GPS with you at all times to keep from losing your way.