



Lake Lincoln 2017

REEL FACTS

Dustin Rodgers – Fisheries Biologist
dustinr@mdwfp.state.ms.us

General Information: Lake Lincoln is a 550 acre State Park Lake which first opened in 1965. The lake was renovated in 2000 to repair the valve stem. Since reopening in 2002, the lake has produced good numbers of bass and crappie, with brush piles as the main form of habitat.

Location: Approximately 3 miles east of Wesson off Sunset Rd NE.

Fishery Management: Largemouth Bass, bream, crappie, catfish, and Hybrid Striped Bass.

Lake Depth Map: http://www.mdwfp.com/media/128188/lincoln_web_map_2015.pdf

Purchase a Fishing License: <http://www.mdwfp.com/license/fishing-license.aspx>

Amenities

- 1 boat ramp with courtesy pier, parking lot, and public restroom
- 3 handicapped fishing piers
- 71 camping pads with water/electric hookups, 1 cabin, and 3 cottages
- 18 hole disc golf course
- Beach volleyball court, playground, 2 pavilions, swimming area, and nature trail

Creel and Size Limits

- Bream: 100 per day
- Catfish: 10 per day
- Crappie: 30 per day
- Hybrids: 6 per day with minimum length of 15"
- Largemouth Bass: 10 per day

Regulations

- Fishing is not allowed from the courtesy pier adjacent to boat ramp.
- Rod and reel or pole fishing is allowed. No trotlines, FFFD's, jugs, yo-yo's, limblines, throwlines, or set hooks are allowed.
- Sport fishing licenses and fishing permits are required except on designated days during National Fishing and Boating Week.
- Skiing is allowed within ski area. Lake is designated as No Wake in all other areas.

Forage Species

- Gizzard Shad
- Threadfin Shad
- Golden Shiners
- Crawfish

Fishing Tips

Bream

- Try crickets, red wigglers, and wax worms in shallow areas during late spring and summer.

Catfish

- Try tightlining liver or blood scented bait along deep drop offs of main lake points and creek channels.

Crappie

- Target brush piles around the main lake creek channels. Spider rigging is very popular with jigs and minnows.

Largemouth Bass

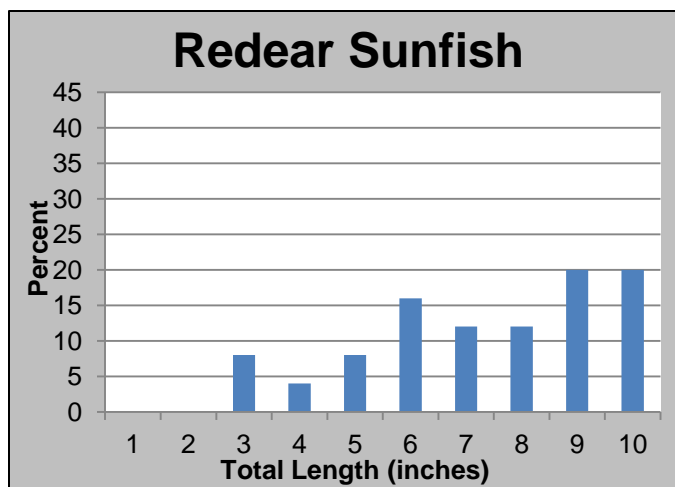
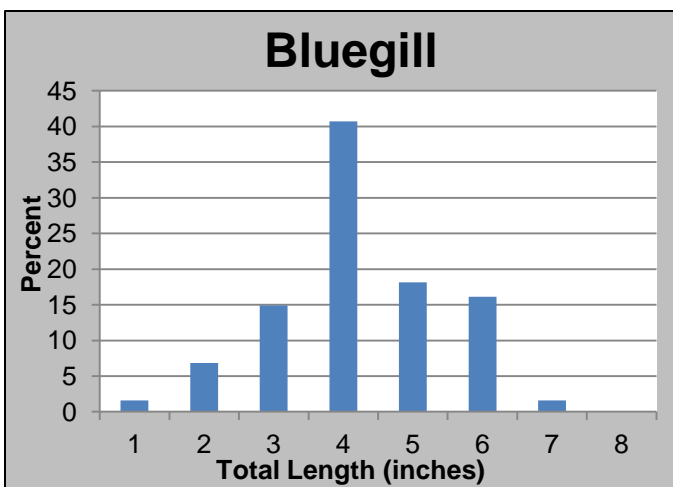
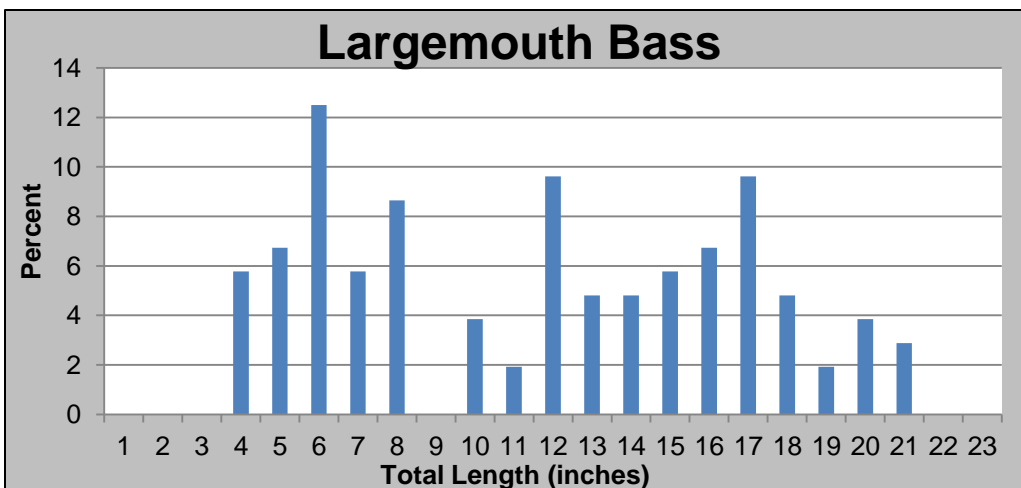
- Target brush piles with junebug, plum, or green pumpkin colored soft plastics. Topwater baits can also be good in the morning around main lake points.

Below: Results from the 2015 fall electrofishing survey conducted at Lake Lincoln.

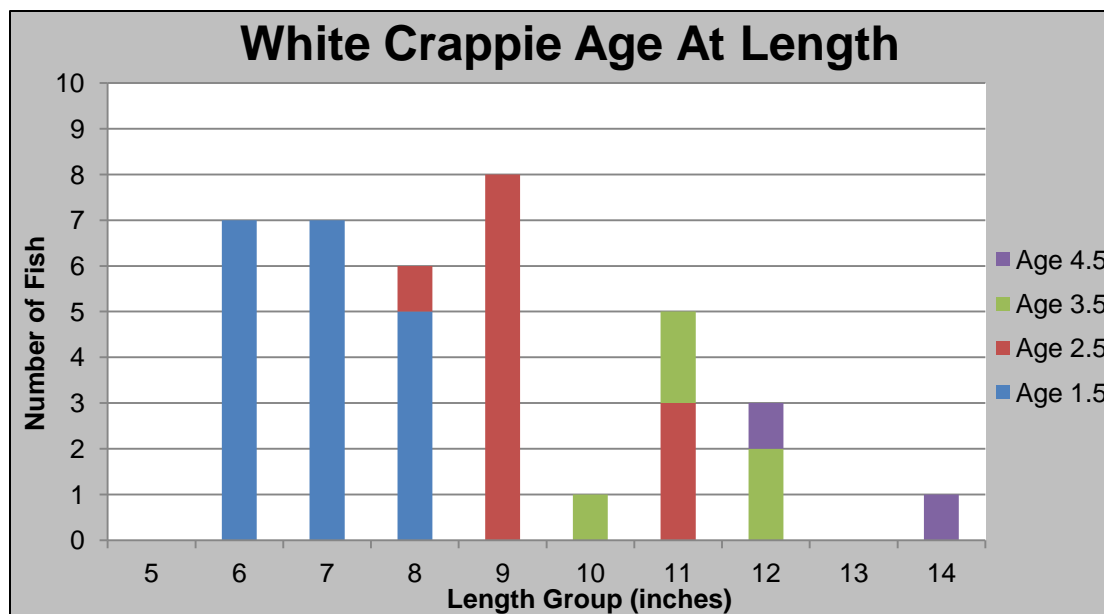
Species	# of fish collected	% of sample	Average Length (inches)	Maximum Length (inches)	Average Weight (pounds)	Catch Rate – Adult fish (fish/mile)
Threadfin Shad	399	38.5	2.5	3.5	-	-
Bluegill	248	23.9	4.7	7.4	0.1	62.6
Gizzard Shad	126	12.1	6.9	12.2	-	21.4
Longear Sunfish	121	11.7	4.4	6.2	0.1	29.9
Largemouth Bass	104	10.0	12.1	21.9	1.6	19.1
Redear Sunfish	25	2.4	7.7	10.6	0.4	6.0
Channel Catfish	7	0.7	18.3	22.4	2.3	2.3
Hybrid Striped Bass	5	0.5	21.9	24.3	4.0	1.1
White Crappie	1	0.1	8.7	8.7	0.3	0.2
Warmouth	1	0.1	6.7	6.7	0.2	0.2



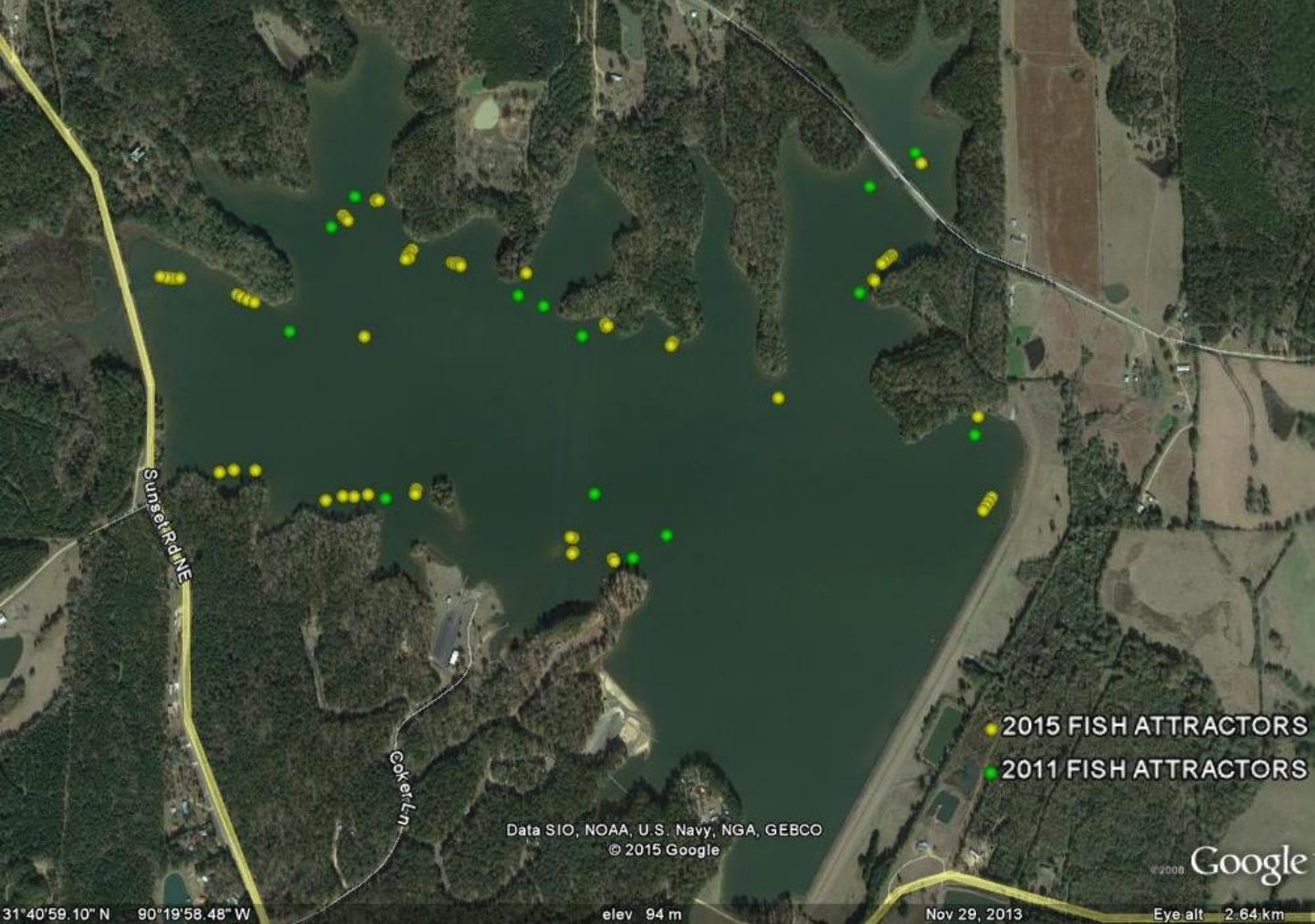
Above: Largemouth Bass and White Crappie, historically, have been the most sought after game fish at Lake Lincoln.



Above: Length distributions for Largemouth Bass, Bluegill, and Redear Sunfish collected during 2015 fall electrofishing.



Above: Age at length for White Crappie collected during 2014 fall lead net sampling. The majority of crappie collected were 1.5 to 2.5 years old and ranged between 6 and 11 inches in length. A group of 3.5 year old crappie ranged from 10 to 12 inches in length, while a couple of 4.5 year old crappie were over 12 inches.



Above and Below: Locations of fish attractors placed in Lake Lincoln in 2011 and 2015. Fish attractors are comprised of tree tops placed in a variety of depths. These tree tops can be excellent locations to catch Largemouth Bass, bream, and crappie throughout the year.

