



# Lake Mary Crawford 2017

## REEL FACTS

Dustin Rodgers – Fisheries Biologist  
[dustinr@mdwfp.state.ms.us](mailto:dustinr@mdwfp.state.ms.us)

**General Information:** Lake Mary Crawford is a 128 acre State Fishing Lake which first opened in 1957. The lake was the first Dingell-Johnson construction project in Mississippi. The lake has long been known as a popular bream fishery.

**Location:** Approximately 5 miles west of Monticello off Hwy 84.

**Fishery Management:** Largemouth Bass, bream, crappie, and catfish.

**Lake Depth Map:** [http://www.mdwfp.com/media/128140/mary\\_crawford\\_web\\_map\\_2015.pdf](http://www.mdwfp.com/media/128140/mary_crawford_web_map_2015.pdf)

**Purchase a Fishing License:** <http://www.mdwfp.com/license/fishing-license.aspx>

### Amenities

- 2 boat ramps with courtesy piers, parking lot, and public restroom with showers
- 2 handicapped fishing piers
- 20 camping pads with water/electric hookups and nature trail

### Creel and Size Limits

- Bream: 100 per day
- Catfish: 10 per day
- Crappie: 30 per day
- Largemouth Bass: 30 per day

### Forage Species

- Golden Shiners
- Crawfish

### Regulations

- Fishing is not allowed from courtesy piers adjacent to boat ramp.
- Rod and reel or pole fishing is allowed. No trotlines, FFFD's, jugs, yo-yo's, limblines, throwlines, or set hooks are allowed.
- Sport fishing licenses and fishing permits are required except on designated days during National Fishing and Boating Week.
- Skiing is allowed on Sunday, Memorial Day, July 4<sup>th</sup>, and Labor Day from noon to sunset within ski area.
- Lake is designated as No Wake all other times.

### Fishing Tips

#### Bream

- Try crickets, red wigglers, and wax worms in shallow areas during late spring and summer. Brush piles around fishing piers are popular.

#### Catfish

- Try tightlining liver or blood scented bait along deep drop offs of main lake points and around the water control structure.

#### Crappie

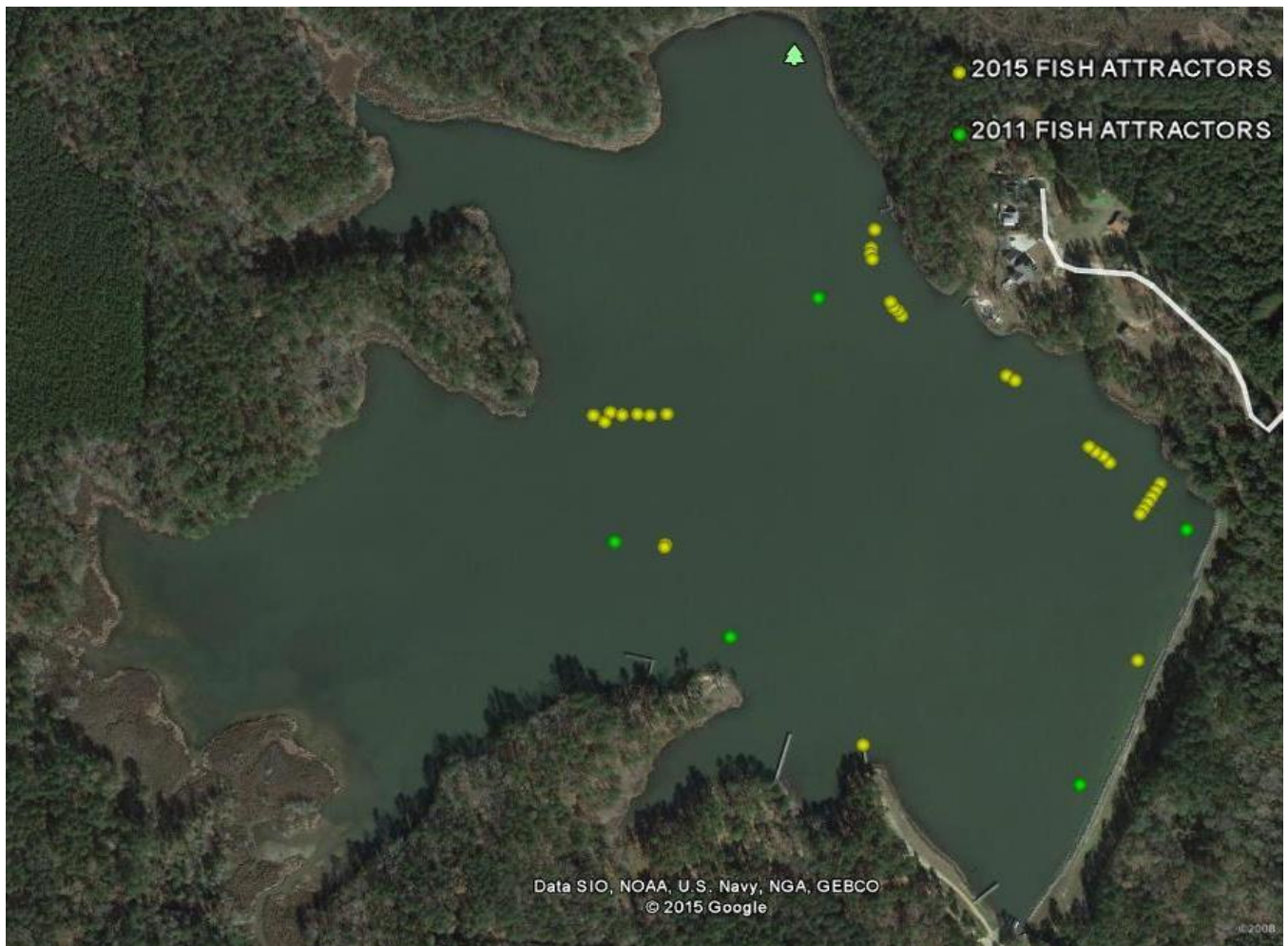
- Target the water control structure and brush piles around the main lake. Minnows are the most popular choice.

#### Largemouth Bass

- Target stumps and brush piles in deeper water with junebug colored soft plastics. Topwater baits can also be good in the morning around grass.

**Below:** Lake Mary Crawford is open for all record fish. Record fish must be weighed and verified by the lake manager, lake supervisor, or fisheries biologist. Anglers who catch a lake record fish will receive a certificate acknowledging their catch. There is no minimum weight for any open lake record.

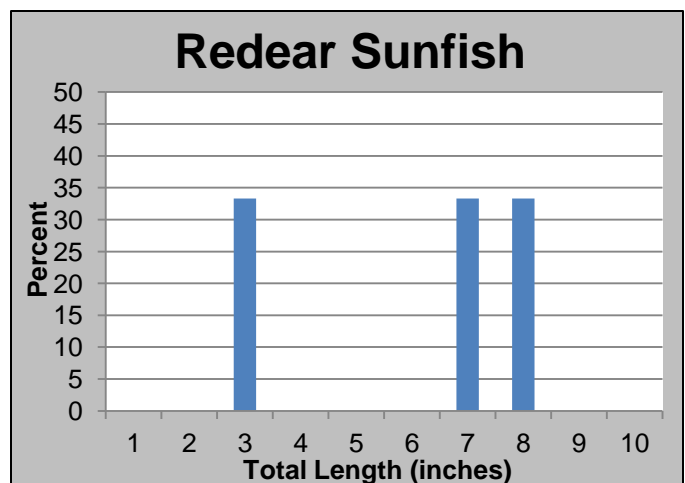
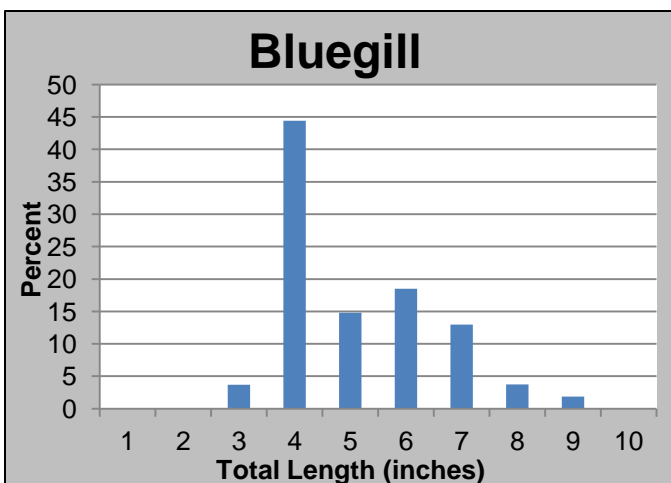
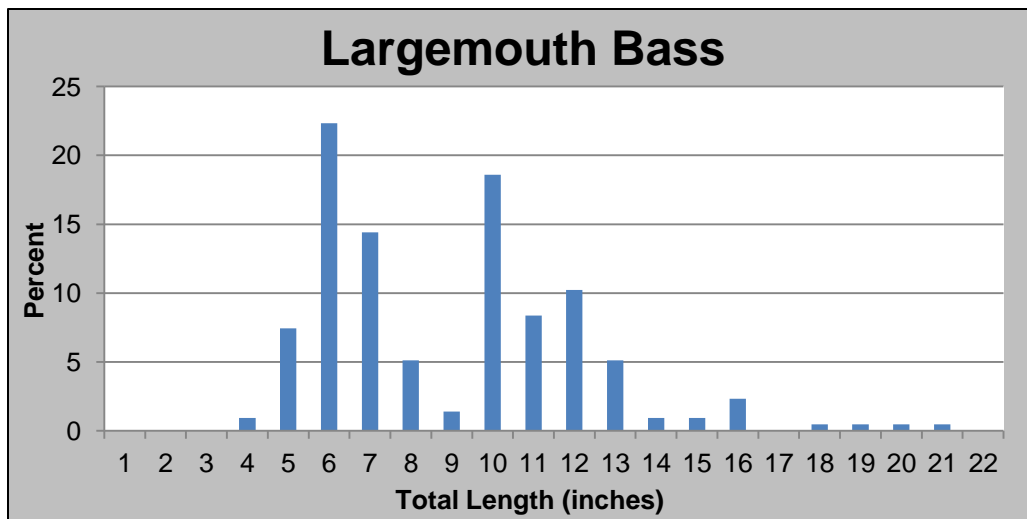
Fish Species	Weight (pounds)	Angler	Date Caught
Largemouth Bass	Open	-	-
Crappie	Open	-	-
Redear Sunfish	Open	-	-
Bluegill	Open	-	-
Catfish	Open	-	-



**Above:** Locations of fish attractors placed in Lake Mary Crawford in 2011 and 2015. Fish attractors are comprised of tree tops placed in a variety of depths. These tree tops can be excellent locations to catch Largemouth Bass, bream, and crappie throughout the year.

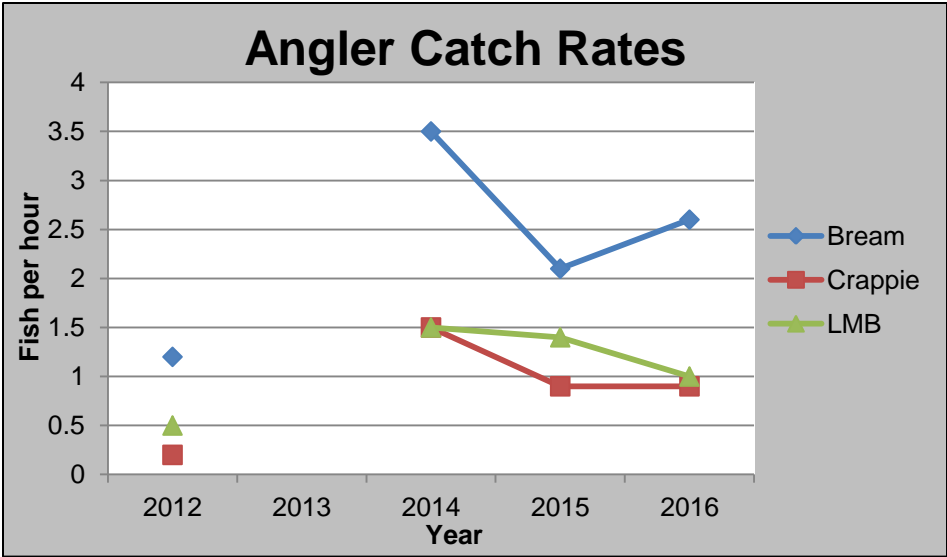
**Below:** Results from the 2015 fall electrofishing survey conducted at Lake Mary Crawford. Over the past decade, the lake has become over-populated with Largemouth Bass. Overall health of the bass population has declined as a result. We encourage anglers to harvest small bass to help improve the health of larger ones.

Species	# of fish collected	% of sample	Average Length (inches)	Maximum Length (inches)	Average Weight (pounds)	Catch Rate – Adult fish (fish/mile)
Largemouth Bass	214	71.1	9.4	21.2	0.6	53.8
Bluegill	54	18.0	5.6	9.1	0.1	24.8
Longear Sunfish	28	9.3	5.6	7.4	0.1	12.9
Redear Sunfish	3	1.0	6.3	8.2	0.4	0.9
White Crappie	1	0.3	12.2	12.2	0.9	0.5
Golden Shiner	1	0.3	10.6	10.6	-	0.5

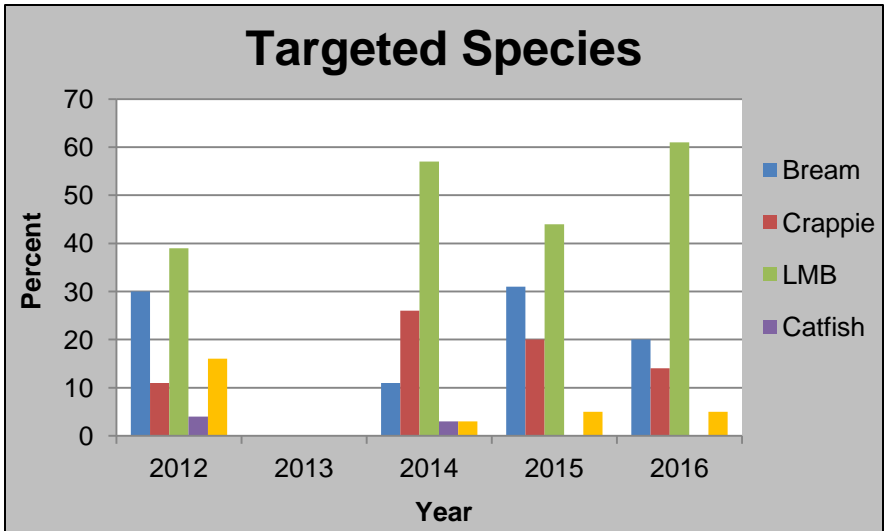
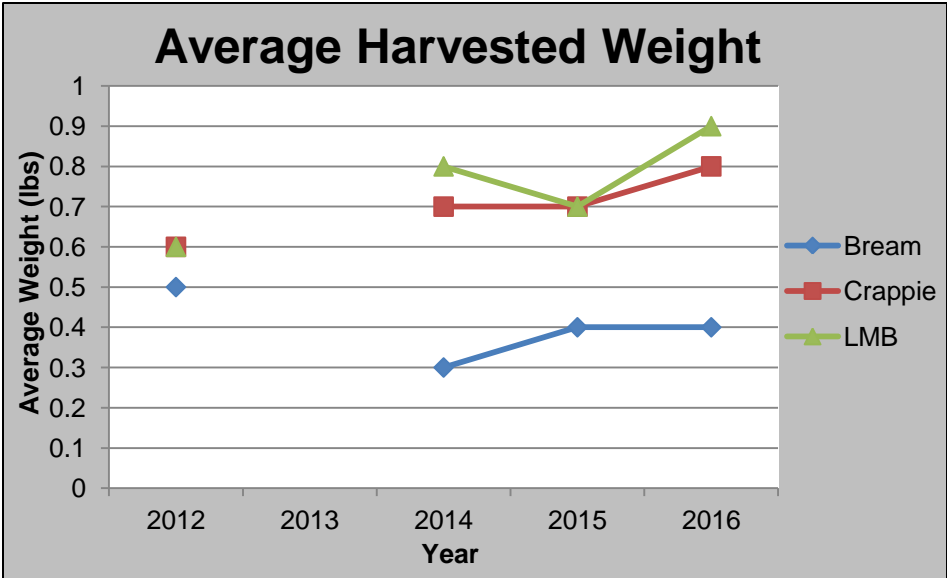


**Above:** Length distributions for Largemouth Bass, Bluegill, and Redear Sunfish collected during 2015 fall electrofishing.

**Right top:** Angler catch rates for Largemouth Bass (LMB), bream, and crappie at Lake Mary Crawford based on spring creel surveys.



**Right bottom:** Average weight of harvested fish at Lake Mary Crawford. Average weight of harvested bream and crappie have remained relatively consistent.



**Left:** Percentage of anglers targeting Largemouth Bass (LMB), bream, crappie, catfish, and anything at Lake Mary Crawford based on spring creel surveys. Bass and bream have been the most sought after fish species.