



# Lake Monroe 2018

## REEL FACTS

Trevor Knight – Fisheries Biologist  
[trevork@mdwfp.state.ms.us](mailto:trevork@mdwfp.state.ms.us)

**General Information:** Lake Monroe is a 99 acre State Fishing Lake constructed in 1959. The lake was renovated in 2014 and reopened in June of 2017. Lake Monroe has been a popular destination for bream, catfish, and Largemouth Bass in years past.

**Location:** Between Aberdeen and Amory off of Highway 45.

**Fishery Management:** Largemouth Bass, Walleye, bream, crappie, and catfish.

**Lake Depth Map:** <http://www.mdwfp.com/media/5444/lake-monroe.pdf>

**Purchase a Fishing License:** [https://www.ms.gov/mdwfp/hunting\\_fishing/](https://www.ms.gov/mdwfp/hunting_fishing/)

### Amenities

- 1 public ramp with courtesy pier, parking lot, and public restroom with showers
- 2 handicapped fishing piers
- 1 earthen fishing pier
- 14 camping pads with water/electric hookups

### Creel and Size Limits

- Bream: 100 per day
- Catfish: 10 per day
- Crappie: 20 per day
- Largemouth Bass: Slot limit, bass 14-22 inches in length must be released immediately, 10 bass per day creel limit, only one may be over 22 inches.
- Walleye: All Walleye must be released immediately.

### Regulations

- Fishing is not allowed from courtesy pier adjacent to boat ramp.
- Rod and reel or pole fishing is allowed. No trotlines, FFFD's, jugs, yo-yo's, limblines, throwlines, or set hooks are allowed.
- Sport fishing licenses and fishing permits are required except on designated days during National Fishing and Boating Week.
- Lake is designated as No Wake at all times.

### Forage Species

- Golden Shiners
- Crawfish

### Fishing Tips

#### Bream

- Try crickets, red wigglers, and wax worms in shallow areas during late spring and summer. Bream beds around the fishing piers are good areas.

#### Catfish

- Try tightlining liver or scented hot dogs along deep drop offs. Night fishing is typically good.

#### Crappie

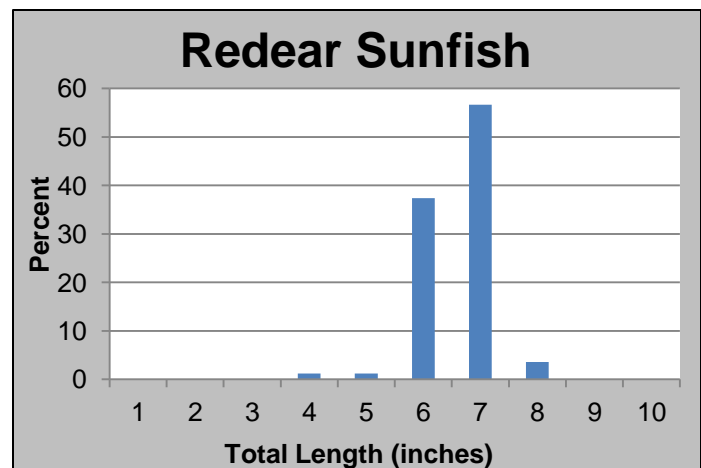
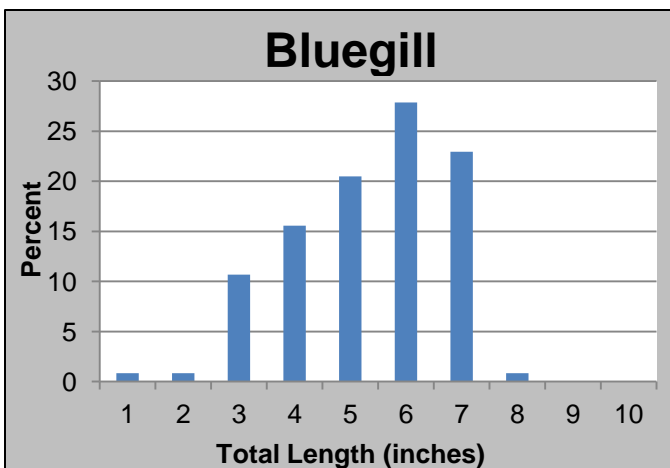
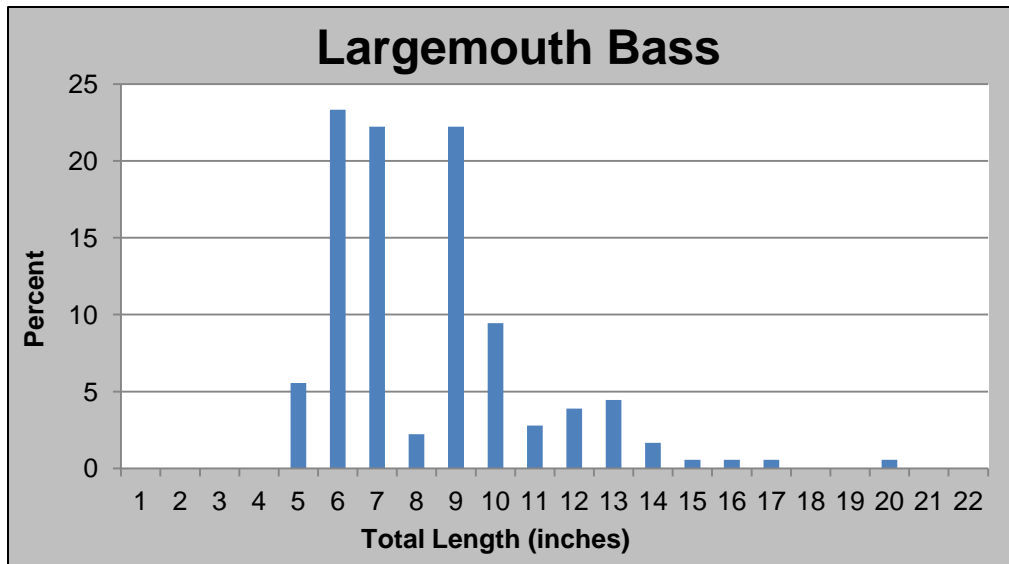
- Target brush piles along the creek channel with live minnows.

#### Largemouth Bass

- Target shallow weedlines in the morning with topwater baits. During the day, fish brush piles and ledges with soft plastics and crankbaits.

**Below:** Lake Monroe record fish. Record fish must be weighed and verified by the lake manager, lake supervisor, or fisheries biologist. Anglers who catch a lake record fish will receive a certificate acknowledging their catch. There is no minimum weight for any open lake record.

Fish Species	Weight (pounds)	Angler	Date Caught
Largemouth Bass	10.80 lbs.	J.L. Duckworth	1997
Crappie	Open	-	-
Redear Sunfish	Open	-	-
Bluegill	Open	-	-
Catfish	Open	-	-



**Above:** Length distributions for Largemouth Bass, Bluegill, and Redear Sunfish collected during 2017 fall electrofishing. Results indicate high survival of bass spawned in 2016 and 2017. In order to prevent the lake from becoming bass crowded, anglers are encouraged to harvest small bass less than 14 inches in length.

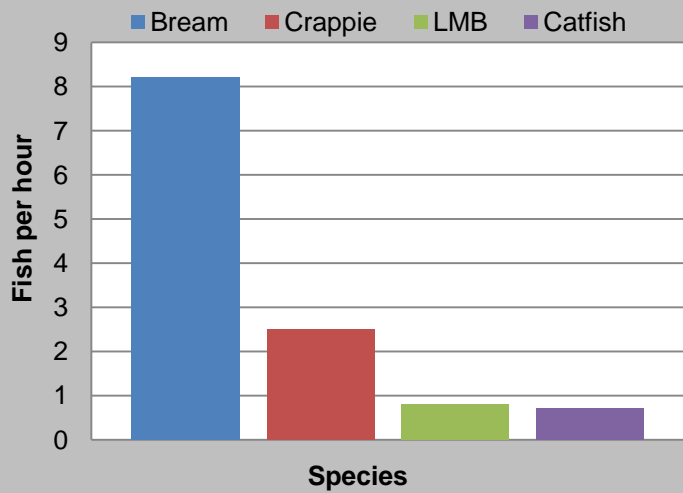
**Below:** Results from the 2017 fall electrofishing survey conducted at Lake Monroe. Five random samples were completed over 3.1 miles of the lake. Growth rates for Largemouth Bass and Walleye were impressive, with bass over 20 inches and Walleye over 18 inches in only 2.5 years since being stocked.

Species	# of fish collected	% of sample	Average Length (inches)	Maximum Length (inches)	Average Weight (pounds)	Catch Rate – Adult fish (fish/mile)
Largemouth Bass	180	44.3	8.8	20.2	0.4	29.7
Bluegill	122	30.0	5.8	8.2	0.2	38.7
Redear Sunfish	83	20.4	7.1	8.9	0.2	26.8
Warmouth	14	3.4	5.6	8.8	0.2	4.5
Gulf-coast Strain Walleye	4	1.0	17.6	18.6	1.8	3.2
Black Crappie	1	0.3	10.8	10.8	0.7	0.3
Green Sunfish	1	0.3	3.9	3.9	-	0.3
Hybrid Bream	1	0.3	3.9	3.9	-	0.3

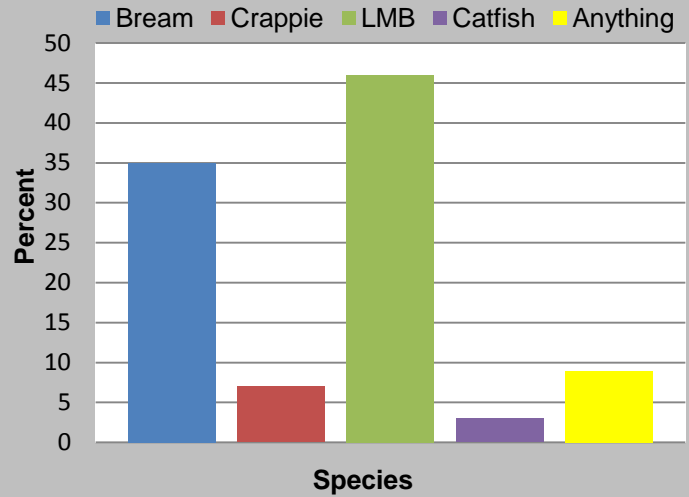
**Right:** Due to the productive soil and high stocking rate of forage, Lake Monroe bass exhibit fast growth rates and are very healthy. Within the next few years, Lake Monroe will start producing trophy bass rivaling any lake in Mississippi.



## Angler Catch Rates



## Targeted Species



**Above:** Creel statistics for the first month after lake reopening showed angler catch rates for bream were very high at 8.2 fish per hour. Catch rates for crappie, Largemouth Bass (LMB), and catfish were high for the first few days after opening; however, they significantly dropped in the following weeks due to heavy fishing pressure. The majority of anglers that fished the first month at Lake Monroe were targeting Largemouth Bass and bream.



**Left:** Bass anglers that have dedicated time to fishing offshore ledges and brush have found success at Lake Monroe. Intense fishing pressure during the first month pushed many of the quality fish out deep. Utilizing electronics can help anglers find the ledges, channels, and brush where the quality fish are staging.