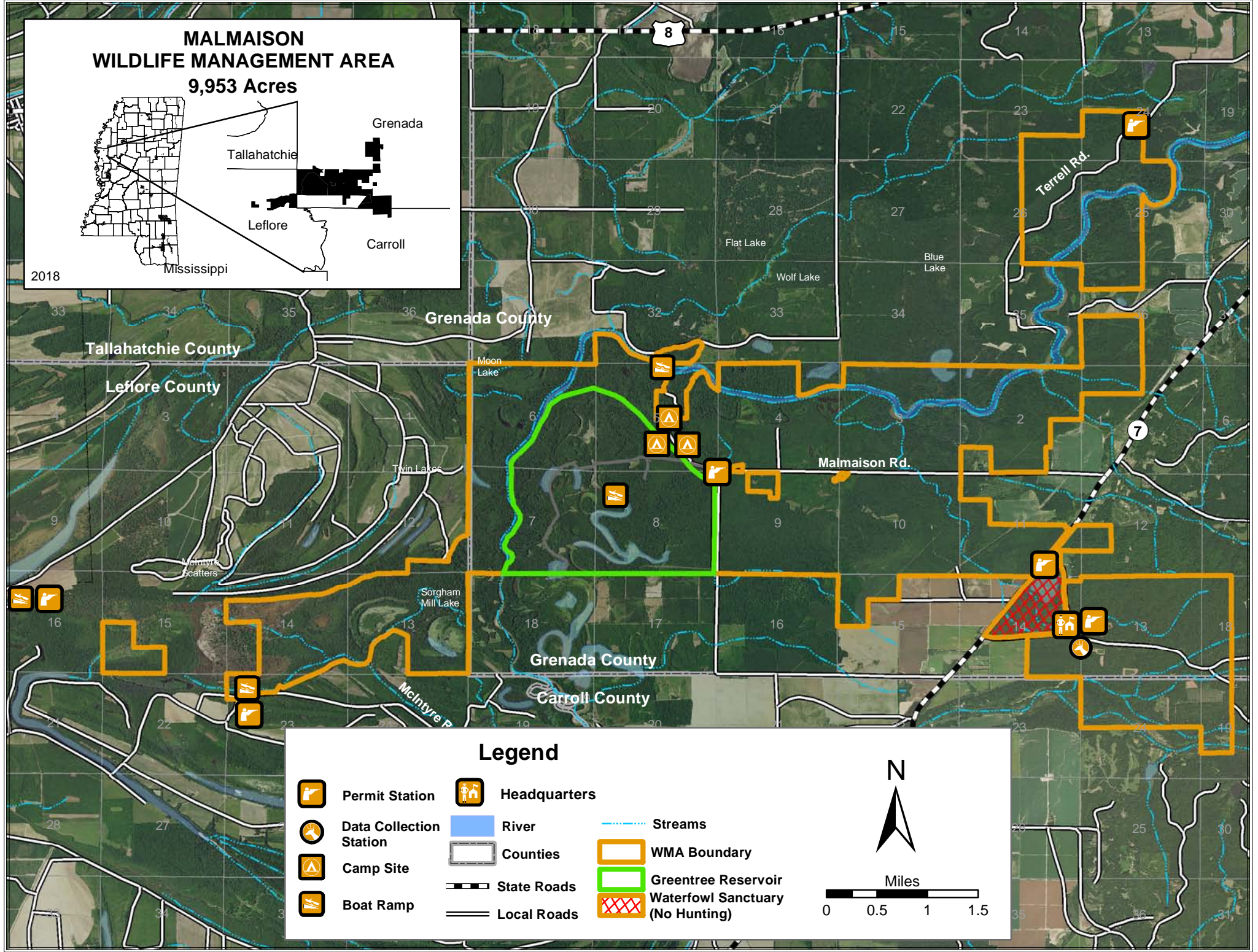
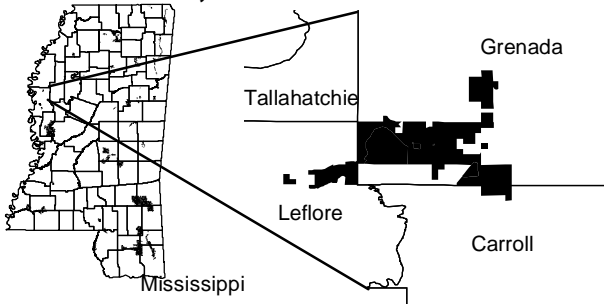


MALMAISON WILDLIFE MANAGEMENT AREA 9,953 Acres



Legend

- | | | | |
|--|-------------------------|--|----------------------------------|
| | Permit Station | | Headquarters |
| | Data Collection Station | | River |
| | Camp Site | | Streams |
| | Boat Ramp | | WMA Boundary |
| | Counties | | Greentree Reservoir |
| | State Roads | | Waterfowl Sanctuary (No Hunting) |
| | Local Roads | | |

