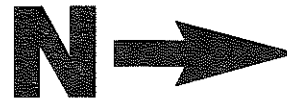




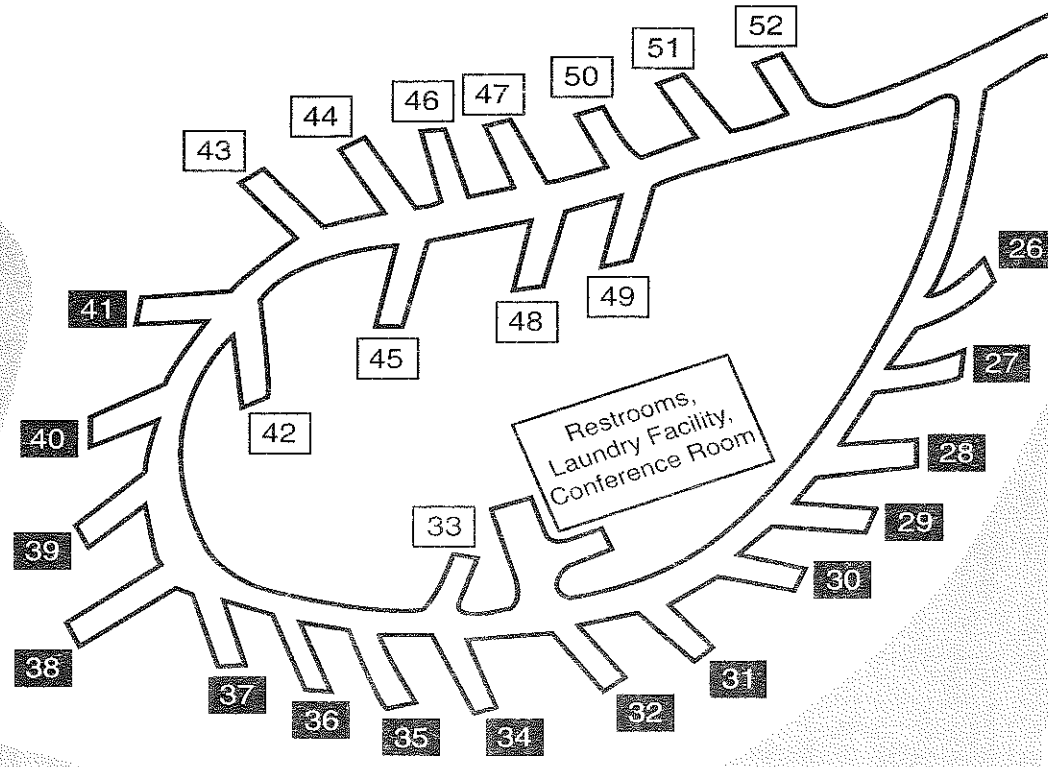
Trace State Park  
2139 Faulkner Road  
Belden, MS 38826  
Phone (662) 489-2958  
Fax (662) 489-6917



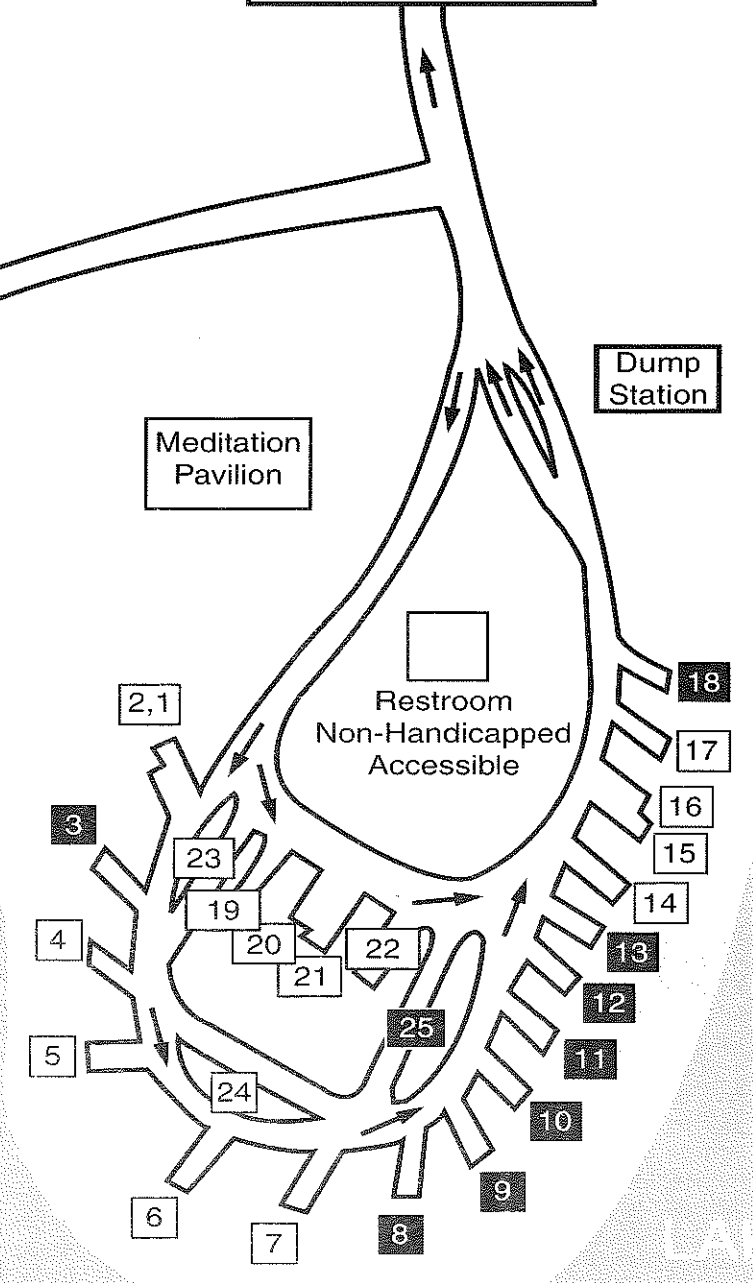
**PREMIUM CAMPSITE**

**STANDARD CAMPSITE**

Exit to Office  
You are 1.5 miles  
from office/exit



Eagle Ridge Campground



Deer Run Campground

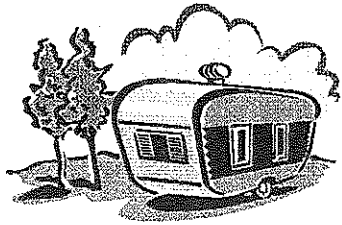
LAKE

LAKE

LAKE

Dump Station

Meditation Pavilion



Trace State Park  
2139 Faulkner Road  
Belden, MS 38826  
Phone (662) 489-2958  
Fax (662) 489-6917

E-mail: [trace@mdwfp.state.ms.us](mailto:trace@mdwfp.state.ms.us)

Website: [www.mdwfp.com](http://www.mdwfp.com)

#### Campground Rules:

1. **ALL CAMPSITES ARE RESERVABLE.** Reservations will be accepted for 1-14 nights, up to 24 months in advance. The minimum length of stay on special weekends and holidays is 3 nights. Contact Park Office for season dates. Payment in full is required at the time of the reservation. Visa® and MasterCard® are also accepted.
2. **Campers must be registered prior to setting up on a campsite.** This can be done by calling 1-800-GO PARKS (467-2757), [www.reserveamerica.com](http://www.reserveamerica.com) and/or by calling the park office at 662-489-2958.
3. Know which site you want before you call or make your reservation as the site chosen is the site you will have. Any transfers if available to you, shall be subject to a transfer fee.
4. **REFUNDS:** Refunds when deemed applicable shall be subject to a transaction fee. Refunds shall be placed on a voucher and may be redeemed at any Mississippi State Park. Vouchers may have expiration date applied per public notice. Cash refunds are not allowed.
5. No refunds will be granted after check in or for shortened stays.
6. **TRANSFERS:** A one-time transfer of a reservation may be allowed pending availability and must be made 7 days prior to date of arrival.

- A transfer fee of \$10 is charged for each unit being transferred.
7. **Cancellation Policy/Fees:** A cancellation fee of \$10 will be charged on reservations canceled 7 days or more in advance. If canceled within 0-6 days of date of arrival 50% of the total amount for the reservation will be forfeited. All remaining balances, if applicable, shall be placed on a voucher.
  8. Please notify the park office if you will be arriving past 5 PM. All fees paid will be forfeited if a guest does not show up for their respective reservation. The reservation will not be held after 11 A.M. the morning after the scheduled arrival date. It is your responsibility to notify the park office by 11 A.M. the morning following your arrival date.
  9. **Check-out is 2:00PM- NO EXCEPTIONS.** Campers not departed by check out time, unregistered campers, vehicles, boats, be towed away as necessary from camp, owner's expense.
  10. The first camping unit will be charged at the site rate. One additional unit (tent only) will be allowed and charged the primitive camping rate per night.
  11. There shall be no more than two (2) vehicles plus the camping unit and no more than eight (8) people per site, unless approved by the park manager.
  12. Camping shall be confined to the designated campground or designated overflow areas.
  13. No campsite can be retained without a camping unit (camper or erected tent). Vehicles, boats and other items may be towed away at the owner's expense.
  14. Premium campsites are considered to be any campsite with water, sewer, electric (20, 30, and 50 amp service) and are located lakeside. No discounts apply for these sites. Maximum stay is 14 days.
  15. Standard campsites have water, sewer and electric (20 and 30 amp only). Persons 65+ years and older and/or disabled may camp at discounted rates. See map.
  16. Monthly camping rates are available, pending usage and season of the year. Park managers reserve the right to select the pad for monthly rentals. Contact the park office for more information.
  17. Campgrounds are restricted to registered campers and guest only. Guest are subject to paying an entrance fee. Guest shall leave the area prior to 10:00PM.

18. Quiet hours are from 10:00PM-6:00AM.
19. No permanent use of a campground for resident purposes is allowed "Homesteading" or otherwise using a campground for a sole place of residence is prohibited. The act of Homesteading includes but is not limited to: erecting permanent or semi permanent structures.
20. Camping units should not be left unattended, the park or its staff is not responsible for lost, stolen, moved or damaged items.
21. Operation of generators is prohibited.
22. Camping pads will not be rented to any person under the age of 21.
23. No alcoholic beverages and loud music permitted.
24. Golf carts and Limited Speed Motor Vehicles (LSMVs) may be used on campground roads only and may not exceed 20 mph. Sidewalk and off road use is prohibited. Operators of golf carts and LSMVs must possess a valid driver's license or be a senior citizen. Other rules do apply. Please see the Park Office for further rules and Regulations.
25. Electric Personal Assistance Mobility Devices (EPAMDs) can be operated by a person of any age with a disability only. EPAMDs and ATV's are prohibited on main park roads. Motorized toys (Barbie Jeep®, John Deer Gator® etc.) are not permitted at all.
26. Children and pets shall not be left unattended.
27. Pets must be kept on a leash (6ft) at all times. Please clean up after your pets. Please be courteous and keep pets quiet. Disruption to other guest shall result in expulsion from the campground.
28. In no case is the discharge of gray water or sewage on the ground or campsite permitted, nor is the storage of gray water or sewage in containers not manufactured specifically for this purpose. Violations are subject to criminal charges, fines, and/or the cost of the clean up.
29. No fires allowed except in designated fire rings. Campfires permitted pending MS State Forestry Service approval for Pontotoc County ([www.mfc.state.ms.us](http://www.mfc.state.ms.us)).
30. Scout groups are permitted in designated areas only.
31. **The washing of vehicles or campers,** routine maintenance tasks, or major repairs to campers, boats, or vehicles are prohibited.
32. Eagle Ridge Conference Room may be reserved for camping clubs/groups only, free to 10 or more units. Cleaning of the facility is required by the club/group upon departure.

33. **SWIMMING: No lake swimming or wadding is permitted.**
34. **Primitive Camping** is located in a separate area from developed camping. Sites are on a first come first serve bases because the sites are non-specific. Restrooms and showers in this area are cold water only.
35. Rangers live on the park and may be contacted for emergencies or incidents that may arise. Family and friends should call in case of an emergency or incident that may arise. During regular business hours (8am till 5pm) calls may be directed to (662)489-2958. After business hours there will be numbers posted on the door at the office. You may also call the Pontotoc County Sheriff Dept. at (662)489-3111. Please be sure to give your location (campsite number, etc) so any emergency may be dealt with promptly.
36. Please give family and friends the pad number you are camping on to assist us in delivering EMERGENCY messages promptly.
37. Registered campground guest are eligible to play golf at the Pontotoc Country Club located on Hwy 6. Limit of 2 persons per registration (duration of visit). Optional cart rental will be charged at regular rates. The course is closed on holidays and special tournaments. Contact the Pontotoc Country Club (662-489-1962) for availability of playing dates and times or park office for more information. You may also check their website at [www.pontotoccc.com](http://www.pontotoccc.com).
38. Any person renting or reserving a unit may be asked if he or she has a criminal background, pursuant to Miss Code Ann §45-33-49. Any person who is a registered sex offender, who rents or reserves camping/cabin facilities without informing the Park of his or her status, may be removed from the park. Any registered sex offender, who does provide the Park with notice of his/her status, may be refused access to such facilities.
39. Policies are taken in part from public notice and may be viewed in full at the park office. Policies are subject to change without notice given to any person.
40. Other rules, regulations and laws may apply as set forth by the State of Mississippi, Pontotoc County and the MDWFP.

Thank you for using the facilities at  
**TRACE STATE PARK**