



Eggs

Fertilized eggs are collected from containers in the raceways and placed into hatching jars. Here they are supplied with fresh water and oxygen.

Catfish use cavities in the wild. They spawn under logs, in undercuts, in river banks, or other protected areas. The containers mimic these cavities.

It takes about one week for flathead catfish eggs to hatch!

North Mississippi Fish Hatchery

Hatchery

Flathead Catfish



(Pylodictis olivaris)

The North Mississippi Fish Hatchery is managed by the Fisheries Bureau of the Mississippi Department of Wildlife, Fisheries, and Parks. Hatcheries help manage fishery resources by producing and stocking fish into Mississippi's public waters.

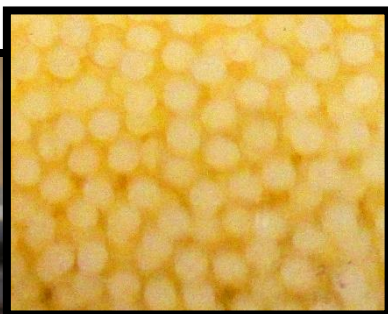
Fisheries biologists collect adult catfish in late spring or early summer. Fish are allowed to spawn in containers placed in the two, 80-foot raceways. Flathead catfish spawn when water temperatures reach 72 - 75 degrees Fahrenheit.



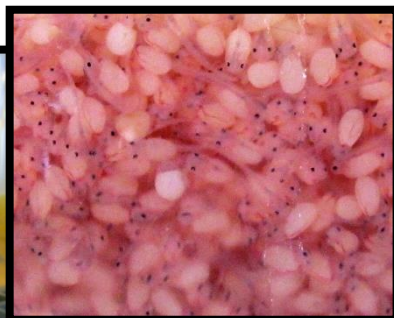
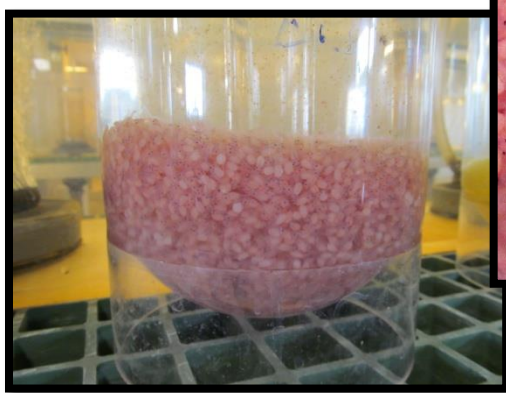
Fry

Newly hatched fish are called fry. Fry are born without mouths. A fry feeds off its yolk sac until its mouth develops!

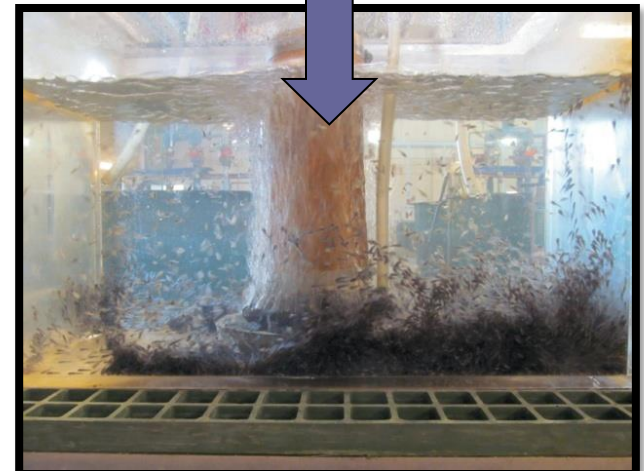
Once they have their mouths, fry feed on plankton. These fry are stocked in lakes and ponds across Mississippi.



After Fertilization



After Hatching



Fingerlings

Catfish are stocked when they reach lengths of 2 inches.

Did you know?

- Even as fry, catfish already have barbels (whiskers). Catfish use these to locate food.
- Many fishing enthusiasts enjoy handgrabbing for flathead catfish. This is a method of fishing with your hands, also known as "grabbling" or "noodling."