

# North Mississippi Fish

## Hatchery

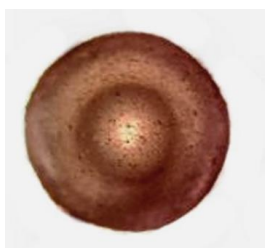
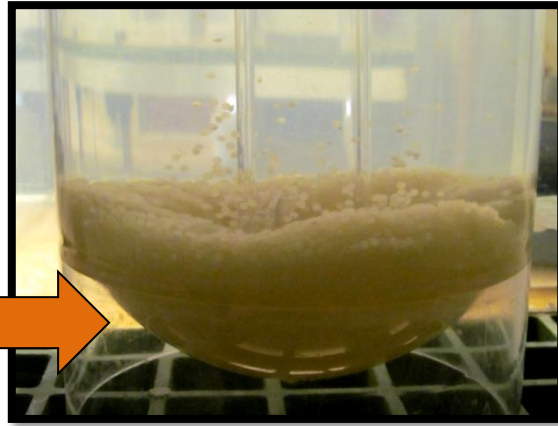
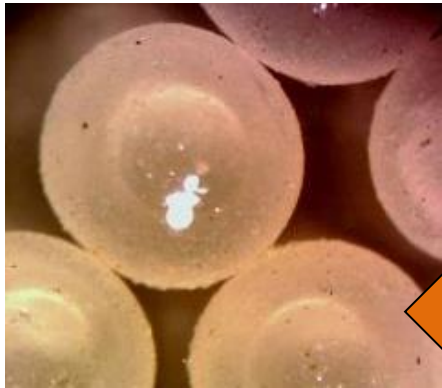
# Southern Walleye

(*Sander vitreus*)

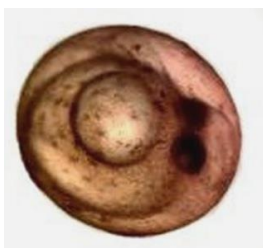


### 1. Egg

Fertilized eggs are placed into hatching jars where they are supplied with freshwater and oxygen. Walleye eggs hatch out in 10 - 15 days!



After Fertilization



12 Days Later

The North Mississippi Fish Hatchery is managed by the Fisheries Bureau of the Mississippi Department of Wildlife, Fisheries, and Parks.

Hatcheries help manage fishery resources by producing and stocking sport fish into Mississippi's public waters.

Southern Walleye, also called Gulf Coast Walleye begin spawning in rivers when water temperatures reach 50 - 55 degrees Fahrenheit. Hatchery staff collects adult walleye in early spring. Eggs are collected from these fish inside the hatchery.



### 2. Fry

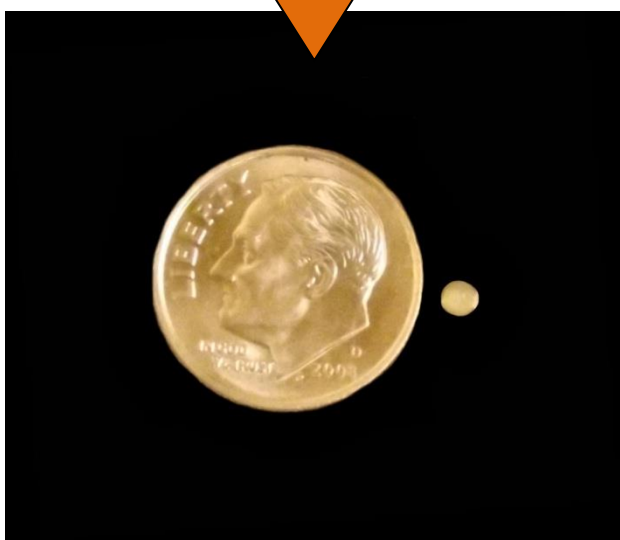
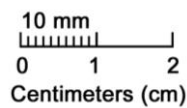
Newly hatched fish are called fry. Fry are born without mouths. A fry feeds off its yolk sac until its mouth develops!

Do you see the black spots in the picture below? Those are eyes!



### Sizing them up!

Walleye eggs are very small, about 2 mm in diameter!



### 3. Fingerlings

After the fry have formed mouths, they are placed into hatchery ponds where they feed on plankton. These fish are harvested in about 30 - 40 days when they reach 1 - 2 inches in length. These fish are called fingerlings. Fingerlings are then stocked in lakes and rivers in Mississippi.

