

DMAP Reports - Upper Sardis WMA - 2020

NRIS ID 6998 DMAP ID 9203

BIOLOGIST Holder COUNTY Lafayette County, MS

ACRES 50485 YEARS ON DMAP 30 SOIL REGION Upper Coastal Plain

Introductory Comments

Harvest Summary

	Recommended Harvest	Number Harvested	Acres/Deer Harvested	% Data Collected
Bucks	0 - 0	23	2195	100
Does	0 - 0	9	5609	112
Totals		32	1577	103

Comments

Harvest History

	Region Avg	2020	2019	2018	2017	2016	2015	2014	2013	2012	2011	2010	2009	2008
Acres	329909	42615	50485	43000	43000	43000	43000	43000	43000	43000	43000	43000	43000	43000
Total Deer	2001.2	72	32	57	23	31	49	71	46	88	83	102	105	111
Bucks	848.6	34	23	36	22	29	24	28	19	44	47	44	45	47
Does	1152.6	37	9	21	1	2	25	43	27	44	36	58	60	64
Acres/Deer	164	590	1577	885	1869	1387	877	605	934	488	518	421	409	387
Bucks	388	1223	2195	1402	1954	1482	1791	1535	2263	977	914	977	955	914
Does	286	1141	5609	2404	43000	21500	1720	1000	1592	977	1194	741	716	671

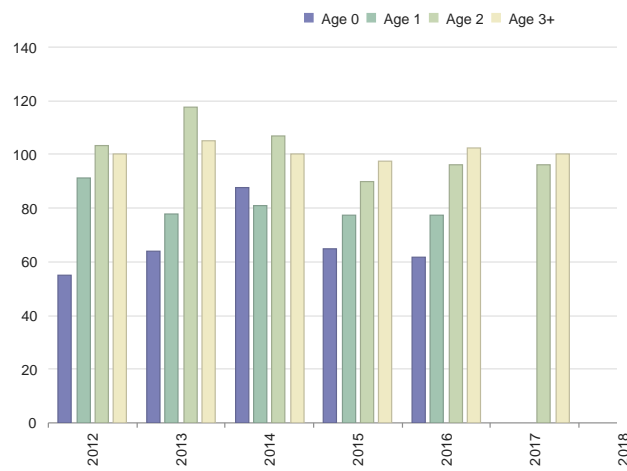
Comments

Doe Harvest History

	Region Avg		2020	2019	2018	2017	2016	2015	2014	2013	2012	2011	2010	2009	2008	2007
Does	1152.6	40.0	9	21	1	2	25	43	27	44	36	58	60	64	74	68
Acres/Doe	289.6	3743.3	5609	2404	43000	21500	1720	1000	1592	977	1194	741	716	671	581	632
% .5 Does	9.8	8.1	N/A	4	N/A	N/A	12	9	7	2	8	8	1	1	6	N/A
# .5 Does	117.6	3.5	0	1	0	0	3	4	2	1	3	5	1	1	5	
Avg Weight	59.0	58.9	N/A	78	N/A	N/A	61	64	87	64	55	69	52	77	60	N/A
% 1.5 Does	18.4	16.7	11	9	N/A	N/A	8	4	11	22	22	29	20	14	16	10
# 1.5 Does	217.4	7.9	1	2	0	0	2	2	3	10	8	17	12	9	12	
Avg Weight	86.4	85.6	114	80	N/A	N/A	77	77	81	77	91	99	89	94	87	84
% 2.5 Does	16.0	20.3	N/A	N/A	N/A	50	4	2	3	9	22	24	16	23	22	13
# 2.5 Does	189.6	8.8	0	0	0	1	1	1	1	4	8	14	10	15	17	
Avg Weight	96.0	97.3	N/A	N/A	N/A	96	96	90	107	117	103	113	99	105	97	91
% 3.5+ Does	50.6	54.5	88	76	100	50	72	74	51	59	38	37	58	53	48	67
# 3.5+ Does	588.6	20.6	8	16	1	1	18	32	14	26	14	22	35	34	36	46
Avg Weight	103.4	104.0	105	90	120	100	102	96	99	105	101	124	112	109	105	105
% Lactation	N/A	-														
1.5	10.0	15.9	0	0	N/A	N/A	0	0	0	0	0	5	8	0	8	
2.5	47.8	40.9	N/A	N/A	N/A	0	0	0	0	50	25	35	20	26	23	
2.5+	56.4	38.6	12	18	0	50	21	27	20	36	36	33	40	38	41	27
3.5+	59.6	42.6	12	18	0	100	22	28	21	34	42	31	45	44	50	32

Comments

Doe Live Weights



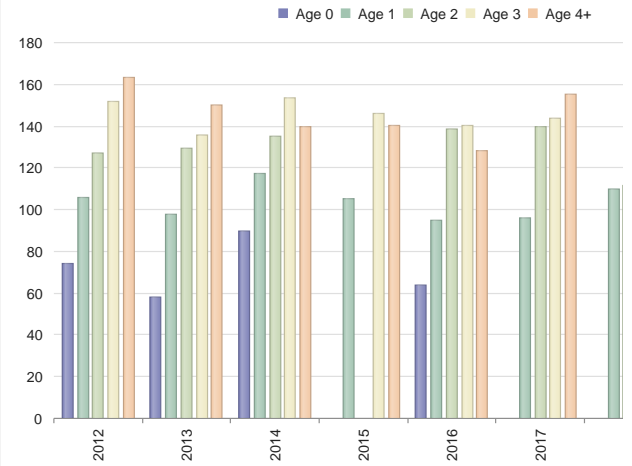
Comments

Buck Harvest History

	Region Avg	2020	2019	2018	2017	2016	2015	2014	2013	2012	2011	2010	2009	2008	2007	
Bucks	848.6	37.3	23	36	22	29	24	28	19	44	47	44	45	47	37	49
Acres/Buck	391.0	3069.4	2195	1402	1954	1482	1791	1535	2263	977	914	977	955	914	1162	877
% .5 Bucks	5.2	9.6	N/A	5	N/A	N/A	4	N/A	5	2	6	4	2	4	5	6
# .5 Bucks	48.8	3.0	0	2	0	0	1	0	1	1	3	2	1	2	2	3
Avg Weight	59.6	64.0	N/A	0	N/A	N/A	64	N/A	90	58	74	79	60	77	54	88
% 1.5 Bucks	11.0	19.2	N/A	22	9	3	8	3	10	18	8	13	15	4	8	12
# 1.5 Bucks	99.4	9.0	0	8	2	1	2	1	2	8	4	6	7	2	3	6
% Spikes	62.2	61.4	N/A	87	50	100	50	0	50	25	25	33	71	100	100	83
Avg Weight	98.8	101.9	N/A	87	110	96	95	105	117	97	105	114	97	99	88	97
Avg Points	2.6	3.7	N/A	2.1	5.0	2.0	5.0	7.0	4.0	4.5	4.3	4.5	2.4	2.0	1.3	2.2
Avg Base	1.6	1.9	N/A	1.6	1.8	1.3	2.1	2.5	2.0	1.8	1.9	1.8	1.9	1.1	0.7	1.3
Avg Length	4.8	6.9	N/A	3.5	9.1	2.0	8.6	11.0	8.6	7.7	8.2	7.6	5.8	3.6	2.8	4.1
Avg Spread	5.2	5.6	N/A	5.3	7.0	3.5	5.4	10.8	8.6	7.3	5.1	6.0	4.5	2.0	1.3	2.6
% 2.5 Bucks	19.2	25.2	13	11	9	17	16	N/A	10	36	25	43	20	8	27	18
# 2.5 Bucks	166.4	10.5	3	4	2	5	4	0	2	16	12	19	9	4	10	9
Avg Weight	134.6	130.6	133	111	111	140	138	N/A	135	129	126	145	130	139	129	133
Avg Points	6.4	6.4	6.7	5.5	6.5	5.8	6.5	N/A	5.0	7.1	6.8	6.7	6.1	7.3	7.0	6.3
Avg Base	3.1	3.0	3.3	3.0	2.9	2.5	2.1	N/A	1.9	2.9	3.0	2.8	4.5	2.9	3.2	2.8
Avg Length	13.6	13.4	11.9	10.9	13.2	11.5	11.7	N/A	16.2	13.8	13.3	13.3	13.1	14.1	14.5	13.0
Avg Spread	11.1	11.1	11.8	9.0	12.4	11.8	11.7	N/A	11.3	11.2	9.8	10.3	12.2	10.7	10.3	11.3
% 3.5 Bucks	27.8	30.6	34	22	40	27	33	28	21	22	40	27	42	57	43	38
# 3.5 Bucks	239.0	10.4	8	8	9	8	8	8	4	10	19	12	19	27	16	19
Avg Weight	147.4	149.3	152	121	131	144	140	146	153	135	152	157	157	148	149	140
Avg Points	7.3	7.3	7.8	6.6	7.0	7.1	6.4	6.6	6.8	8.0	7.0	7.4	7.1	7.0	7.8	7.7
Avg Base	3.7	3.7	3.1	2.8	2.9	3.4	3.5	3.3	4.1	3.5	3.4	3.6	3.4	3.6	3.6	3.3
Avg Length	15.8	16.5	15.4	13.7	15.3	15.4	15.5	14.9	15.2	15.3	15.3	16.5	15.8	16.9	17.8	16.0
Avg Spread	12.8	13.1	11.9	10.9	11.1	11.8	12.2	10.2	12.6	13.3	11.7	13.4	12.5	13.2	13.8	13.1
% 4.5+ Bucks	29.2	22.6	52	33	36	48	33	53	36	18	14	11	20	25	16	24
# 4.5+ Bucks	252.0	7.8	12	12	8	14	8	15	7	8	7	5	9	12	6	12
Avg Weight	160.6	156.4	152	131	141	154	127	139	139	149	162	172	169	160	154	151
Avg Points	8.1	7.7	7.0	6.6	7.6	8.1	7.5	7.6	7.3	7.9	8.3	8.2	7.2	7.9	6.7	7.9
Avg Base	4.2	4.1	3.7	3.5	3.8	4.0	3.3	3.3	3.2	4.4	4.7	4.5	4.2	4.3	4.3	3.7
Avg Length	17.9	17.9	16.7	16.2	17.7	18.1	14.2	16.1	13.8	18.4	15.7	18.5	17.5	19.4	18.2	17.9
Avg Spread	14.5	14.8	13.9	12.6	14.2	15.0	11.5	13.3	12.2	14.7	15.3	14.4	12.5	14.9	16.0	14.3

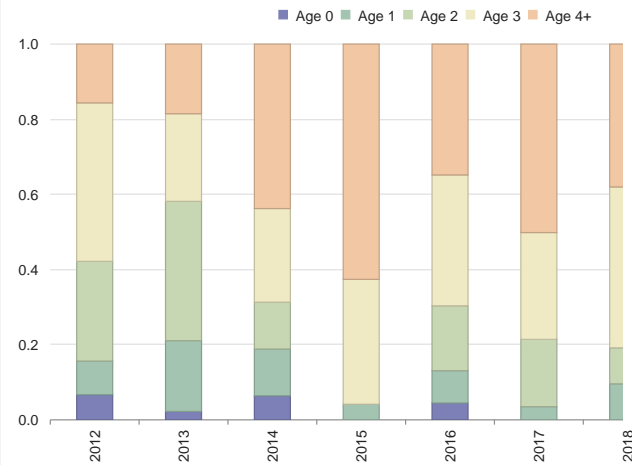
Comments

Buck Live Weights



Comments

% Bucks by Age Class



Comments