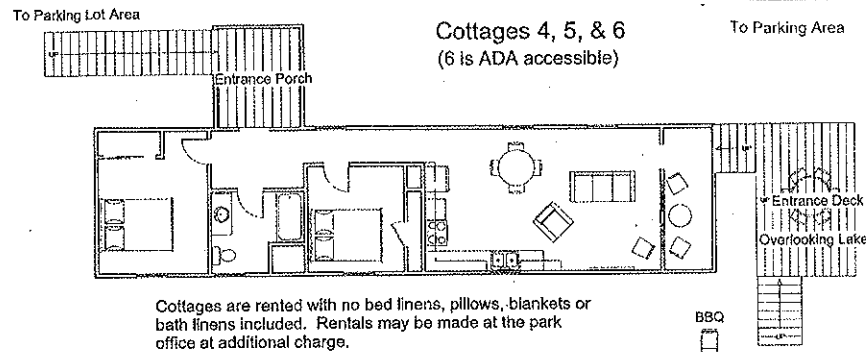
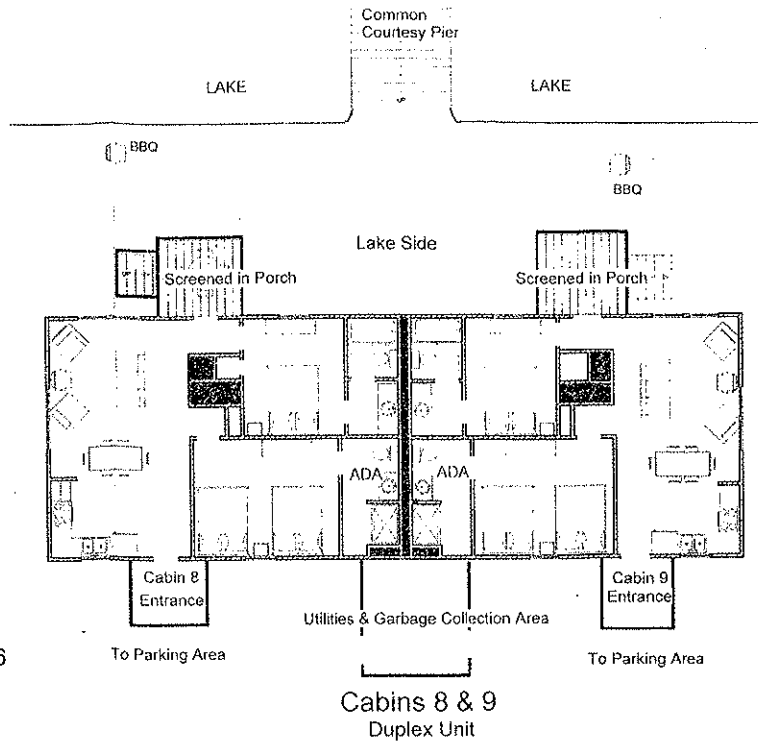
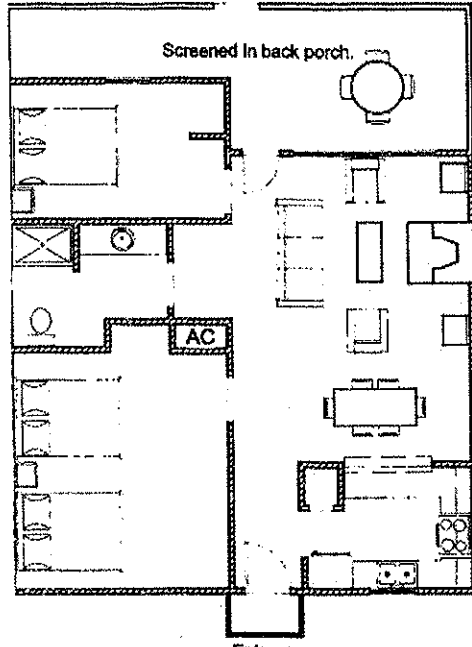


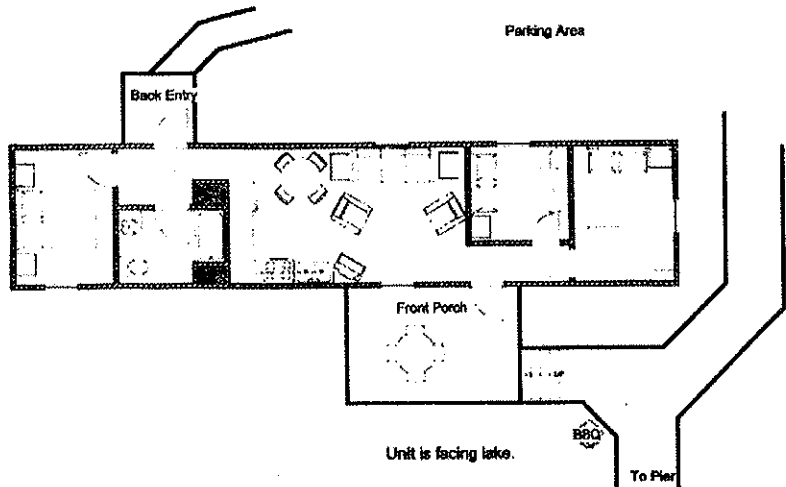
CABINS 2 & 3

Back side faces lake and has its own courtesy pier nearby.

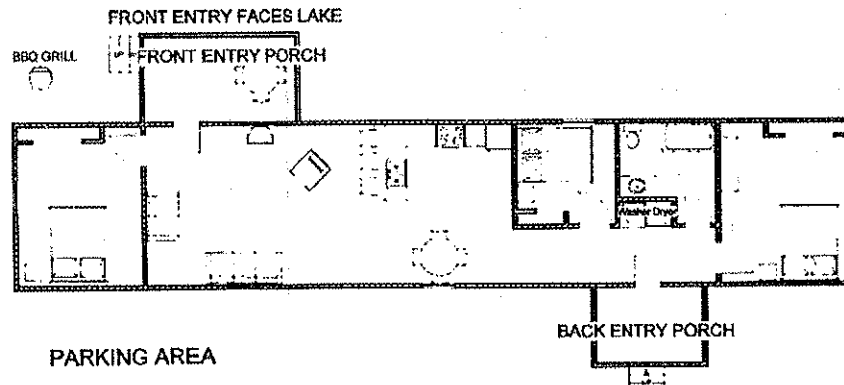


Cottages are rented with no bed linens, pillows, blankets or bath linens included. Rentals may be made at the park office at additional charge.

**UNIT (Cabin) # 10
Mobile Home**



**UNIT (CABIN) #11
Mobile Home**



Trace State Park

2139 Faulkner Road

Belden, MS 38826

662-489-2958

Fax 662-489-6917

Website: www.mdwfp.com

CHECK-IN..... 3:00 PM

CHECK-OUT..... 11:00 AM



Cabin 2 & 3 are two bedroom cabins with three (3) queen beds, which accommodate up to six (6) people. Full size open kitchen area, living room area with ceiling fan and fireplace, screened porch with patio furniture and outdoor BBQ grill. All cabins are located lakeside. **Cabin #3 is handicap ADA complaint**

Cottages 4, 5, & 6 are two bedroom units with a combination kitchen/living room, furnished with service of four persons, basic cooking items, and a bathroom with shower/tub. Cottages feature central air and heat, TV with dish service, a deck with patio furniture overlooking the lake, and a grill. **Cottages are not furnished with linens, towels, blankets/bedspreads, or pillows, however may be rented at an additional charge and may be picked up at the park office at time of check in.** Cottage six (COT6) is a handicap unit; however the front deck area must use steps for access, entrance porch has a ramp. No pets are allowed in cottages or cottage area.

Cabins 8 & 9 (Duplex Unit) are two bedrooms, two bath cabins with three (3) queen beds, which accommodate up to six (6) people. Cabins are handicap ADA complaint. Features an open floor plan with an open kitchen/living room area, ceiling fans, central air and heat, screened in back porches with patio furniture and are located lakeside with BBQ grill. There is a common courtesy pier for lake access.

Unit (Cabin) 10 & 11 is a mobile home in the most secluded area of our cabins. It is located lakeside with three (3) bedrooms and one (1) bath and can accommodate six (6) people. There is a front and back porch. The front porch has patio furniture and an outside BBQ grill.

Reservations are strongly recommended and may be made up to twenty four (24) months in advance by calling 1-800-GO PARKS (467-2757), www.reserveamerica.com and/or by calling the park office at 662-489-2958. Minimum length of stay during the regular season (August 16 through May 14) is two (2) nights on weekends and no minimum during the week. Minimum length of stay during the summer season (May 15 through August 15) is three (3) nights on the weekends, holidays and special events and no minimum during the week. Weekends are Friday and Saturday nights stay. Maximum length of stay is 14 days. A **Deposit** of 50% will be required at the time the reservation is made. The remaining balance will be due upon arrival. If other members of your party arrive before you and wish to pick-up the key, the balance must be paid before the key is released.

Refunds when deemed applicable shall be subject to a transaction fee. Refunds shall be placed on a voucher and may be redeemed at any Mississippi State Park. Vouchers may have expiration date applied per public notice. Cash refunds are not allowed.

Cancellation Policy/Fees: A cancellation fee of \$10 will be charged on reservations canceled 7 days or more in advance. If canceled within 0-6 days of arrival the **50% of the total amount for the reservation will be forfeited.** All remaining balances, if applicable, shall be placed on a voucher.

Please notify the park office if you will be arriving past 5 PM. **All fees paid will be forfeited if a guest does not show up for their respective reservation.** The reservation will not be held after 1:00 AM the morning after the scheduled arrival date. It is your responsibility to notify the park office by 11 AM the morning following your arrival date. Check-in time is 3:00 PM. Check-out time is at 11:00AM. **Please do not ask for an early check-in or later check-out time.**

Firewood

Firewood is available while in season. Please request in advance. The price is \$7.00 per bundle.

Cabin Restrictions

NO PETS ARE ALLOWED IN CABINS OR CABIN AREA.

NO LAKE SWIMMING OR WADING IS ALLOWED!

• Cabins are designed for single family use. Parties, sleepovers (dropping off of persons), family reunions, etc are not allowed.

• Parking is restricted to a maximum of three (3) vehicles at all times.

• Pontotoc County is a dry county. No alcoholic beverages allowed.

• The person renting the cabin must be 21 years of age and is responsible for the cabin and its contents. Children will not be left unattended overnight.

• **No camping units (tent/camper) will be allowed in the cabin area.**

• Operation of off road vehicles is not allowed on park roads or in cabin area. They must be transported to the trails.

Cabin Furnishings

The cabin and all utensils should be left clean on departure. **Furnishings should not be re-arranged in cabin or removed from cabin.** Cabins are complete with: linens, pillow, blankets, bedspread, queen beds, night stands, chairs, lamps, and televisions. The kitchen is furnished. See the following list. **If any items are missing, please inform Park Staff.**

Kitchen Furnishings Include:

- 6 plates*
- 6 soup bowls*
- 6 tumblers/glasses*
- 6 cups/mugs*
- 6 each/knives, forks, and spoons*
- 2 vegetable bowls *
- 2 platters
- 2 mixing bowls
- 1 pitcher
- 1 measuring cup
- 1 butcher knife
- 2 serving spoons
- 1 spatula/turner
- 1 ladle
- 1 tong
- 1 can opener
- 2 cooking pots 1.5/2.75 quart
- 1 skillet, 10"
- 1 cookie sheet
- 1 cake pan 10"x14"
- 1 dish drainer

*Cottage units contain service for four people.

Cabin Linens:	Large	Cabins 8&9
Sheets	6	6
Pillow Cases	6	6
Bath Towels	6	8
Wash Cloths	6	8

The Cottages are not furnished with any linen (bed, bath, pillows, or blankets/bedspreads). Linens are available for rent at the park office or you may bring your own.

Golf Course

Registered cabin guest are eligible to play golf at the Pontotoc Country Club located on Hwy 6. Limit of 2 persons per registration (duration of visit). Optional cart rental will be charged at regular rates. The course is closed on holidays and special tournaments. Contact the Pontotoc Country Club (662-489-1962) for availability of playing dates and times or park office for more information. You may also check their website at www.pontotoccc.com.

Check list of things you may need:

- Personal hygiene articles
- Favorite pillow
- Clothes for the season
- Food/coffee
- Alarm clock
- Games/books
- Fishing/skiing/hiking equipment
- Golf clubs

*The Park Management has the authority to refuse rental, evict persons from the cabins who are disruptive and/or in violation of any policies as set forth by this or any public notice. Fines may be applied for misuse or destruction of cabins and contents. It is your responsibility to know and insure that your guest know the rules.

*Any person renting or reserving a unit may be asked if he or she has a criminal background, pursuant to Miss Code Ann §45-33-49. Any person who is a registered sex offender, who rents or reserves camping/cabin facilities without informing the Park of his or her status, may be removed from the park. Any registered sex offender, who does provide the Park with notice of his/her status, may be refused access to such facilities.

***Policies are taken in part from the public notice and may be viewed in full at the park office. Policies are subject to change without notice given to any person.**