

DMAP Reports - Twin Oaks WMA - 2020

NRIS ID 7001 DMAP ID 9347

BIOLOGIST RogerT COUNTY Sharkey County, MS

ACRES 5800 YEARS ON DMAP 28 SOIL REGION Delta

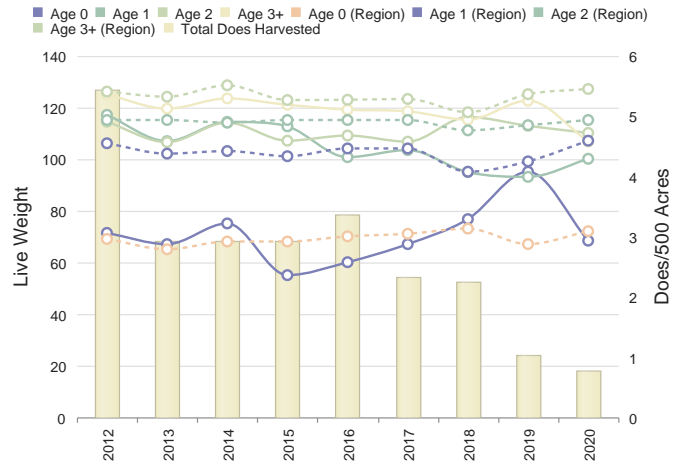
Introductory Comments

Harvest Summary

	Recommended Harvest	Number Harvested	Acres/Deer Harvested	% Data Collected
Bucks	0 - 0	5	1160	100
Does	0 - 0	12	483	100
Totals		17	341	100

Comments

Doe Weights with Harvest



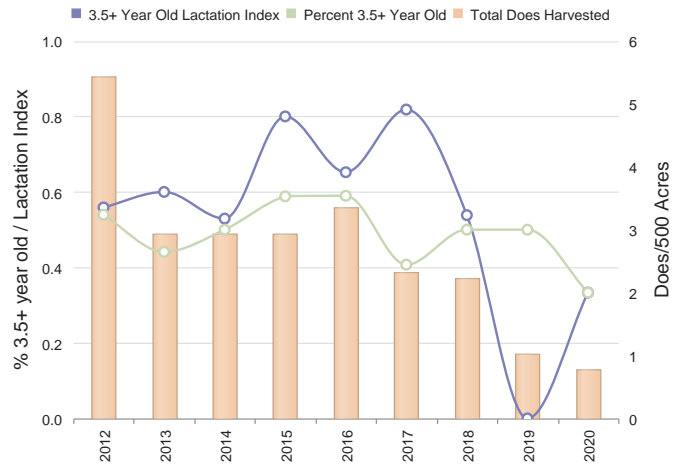
Comments

Harvest History

	Region Avg	2020	2019	2018	2017	2016	2015	2014	2013	2012	2011	2010	2009
Acres	325522 5592	5800	5800	5800	5800	5800	5800	5800	5800	5800	5800	5800	5800
Total Deer	2448.2 48	17	17	43	45	52	45	43	40	85	108	82	7
Bucks	1001.2 12	5	4	8	14	10	10	7	5	19	22	21	1
Does	1447.0 36	12	13	35	31	42	35	36	35	66	86	61	5
Acres/Deer	132 115	341	341	134	128	111	128	134	145	68	53	70	7
Bucks	325 460	1160	1450	725	414	580	580	828	1160	305	263	276	30
Does	224 154	483	446	165	187	138	165	161	165	87	67	95	10

Comments

Doe Age Structure in Relation to Harvest and Lactation Rates



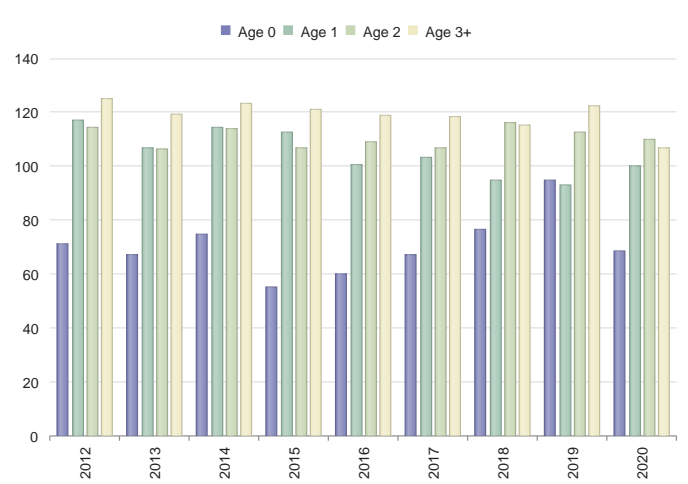
Comments

Buck Harvest History

	Region Avg		2020	2019	2018	2017	2016	2015	2014	2013	2012	2011	2010
Bucks	1001.2	14.8	5	4	8	14	10	10	7	5	19	22	21
Acres/Buck	346.8	532.1	1160	1450	725	414	580	580	828	1160	305	263	276
% .5 Bucks	2.4	12.0	N/A	N/A	N/A	N/A	N/A	30	N/A	N/A	N/A	13	9
# .5 Bucks	30.0	2.0	0	0	0	0	0	3	0	0	0	3	2
Avg Weight	72.8	65.4	N/A	N/A	N/A	N/A	N/A	82	N/A	N/A	N/A	91	75
% 1.5 Bucks	5.2	33.2	N/A	N/A	N/A	7	10	50	71	80	52	54	14
# 1.5 Bucks	56.6	5.5	0	0	0	1	1	5	5	4	10	12	3
% Spikes	67.4	85.3	N/A	N/A	N/A	100	100	40	100	100	70	83	100
Avg Weight	122.2	130.7	N/A	N/A	N/A	95	125	129	126	115	127	144	130
Avg Points	2.6	2.9	N/A	N/A	N/A	0.0	2.0	2.6	2.0	2.0	2.3	2.0	2.0
Avg Base	1.6	1.9	N/A	N/A	N/A	0.0	2.0	2.3	1.1	1.0	2.1	1.4	3.2
Avg Length	5.1	5.9	N/A	N/A	N/A	0.0	15.0	4.5	2.6	1.6	6.4	3.6	5.0
Avg Spread	4.6	5.7	N/A	N/A	N/A	0.0	16.0	3.7	2.8	4.3	4.7	3.9	5.0
% 2.5 Bucks	9.6	19.9	N/A	N/A	12	14	10	N/A	14	N/A	10	4	4
# 2.5 Bucks	96.6	3.2	0	0	1	2	1	0	1	0	2	1	1
Avg Weight	168.2	162.4	N/A	N/A	0	175	130	N/A	120	N/A	141	170	0
Avg Points	7.0	6.0	N/A	N/A	0.0	8.0	7.0	N/A	1.0	N/A	2.0	3.0	8.0
Avg Base	3.4	2.7	N/A	N/A	0.0	1.8	3.0	N/A	0.8	N/A	1.3	2.1	2.8
Avg Length	15.7	13.7	N/A	N/A	0.0	19.1	14.5	N/A	3.0	N/A	4.9	11.4	17.0
Avg Spread	13.6	12.6	N/A	N/A	16.0	16.1	17.0	N/A	0.0	N/A	4.0	12.0	15.3
% 3.5 Bucks	27.8	29.9	60	75	12	21	20	20	N/A	N/A	15	N/A	15
# 3.5 Bucks	273.8	3.9	3	3	1	3	2	2	0	0	3	0	4
Avg Weight	187.8	194.9	185	179	210	168	172	165	N/A	N/A	183	N/A	216
Avg Points	8.2	7.9	8.7	8.3	10.0	7.7	7.5	7.0	N/A	N/A	9.3	N/A	8.0
Avg Base	4.1	4.2	3.7	4.3	4.1	4.8	5.1	3.8	N/A	N/A	4.9	N/A	3.9
Avg Length	18.6	18.8	18.3	19.3	20.3	19.0	19.6	18.0	N/A	N/A	18.3	N/A	17.6
Avg Spread	15.2	15.8	16.3	16.4	15.0	15.6	15.5	15.3	N/A	N/A	15.7	N/A	15.1
% 4.5+ Bucks	49.6	26.0	40	25	75	50	60	N/A	14	20	21	22	28
# 4.5+ Bucks	518.6	3.6	2	1	6	7	6	0	1	1	4	5	6
Avg Weight	198.4	209.0	200	218	193	189	197	N/A	230	175	186	239	221
Avg Points	8.5	8.6	8.5	10.0	8.5	8.4	7.8	N/A	10.0	8.0	7.5	6.6	8.5
Avg Base	4.5	4.7	4.8	4.5	5.5	5.0	4.5	N/A	5.3	4.3	5.0	4.7	4.6
Avg Length	20.1	20.5	20.4	18.8	21.6	21.5	20.3	N/A	20.3	20.5	20.2	20.4	20.2
Avg Spread	16.2	17.1	16.9	17.0	17.0	17.8	17.5	N/A	18.8	17.0	17.6	18.1	16.3

Comments

Doe Live Weights



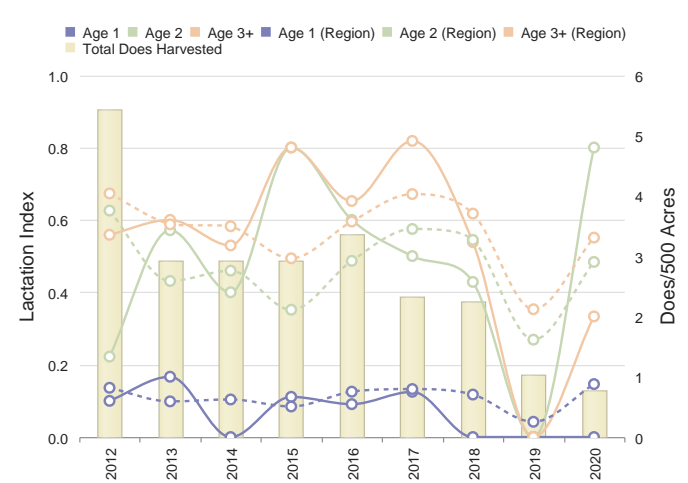
Comments

Doe Harvest History

	Region Avg		2020	2019	2018	2017	2016	2015	2014	2013	2012	2011	2010
Does	1447.0	40.6	12	13	35	31	42	35	36	35	66	86	61
Acres/Doe	252.2	171.3	483	446	165	187	138	165	161	165	87	67	95
% .5 Does	8.4	8.1	25	7	25	12	7	2	5	2	4	13	14
# .5 Does	138.2	3.6	3	1	9	4	3	1	2	1	3	12	9
Avg Weight	70.6	66.4	68	95	76	67	60	55	75	67	71	73	75
% 1.5 Does	17.2	19.8	8	15	17	25	26	25	19	34	30	18	18
# 1.5 Does	260.4	8.5	1	2	6	8	11	9	7	12	20	16	11
Avg Weight	101.8	107.1	100	93	94	103	100	112	114	106	117	124	121
% 2.5 Does	19.4	24.6	41	30	20	25	11	14	27	20	13	19	14
# 2.5 Does	280.2	10.1	5	4	7	8	5	5	10	7	9	17	9
Avg Weight	113.8	118.7	110	112	116	106	109	107	114	106	114	129	133
% 3.5+ Does	51.8	48.4	25	46	37	35	54	57	47	42	51	38	52
# 3.5+ Does	755.4	19.3	3	6	13	11	23	20	17	15	34	33	32
Avg Weight	121.2	126.8	106	122	114	118	118	120	122	119	124	133	136
% Lactation	N/A	-	-	-	-	-	-	-	-	-	-	-	-
1.5	10.8	15.0	0	0	0	12	9	11	0	16	10	31	9
2.5	46.0	52.3	80	0	42	50	60	80	40	57	22	35	44
2.5+	52.2	59.7	62	0	50	68	64	80	48	59	48	42	43
3.5+	54.4	62.3	33	0	53	81	65	80	52	60	55	45	43

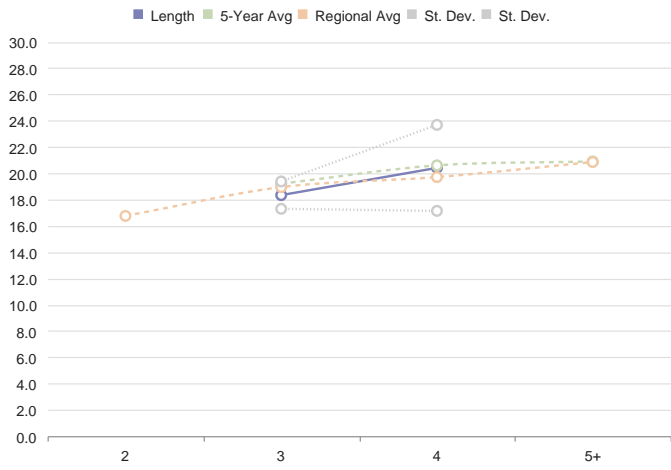
Comments

% Doe Lactation



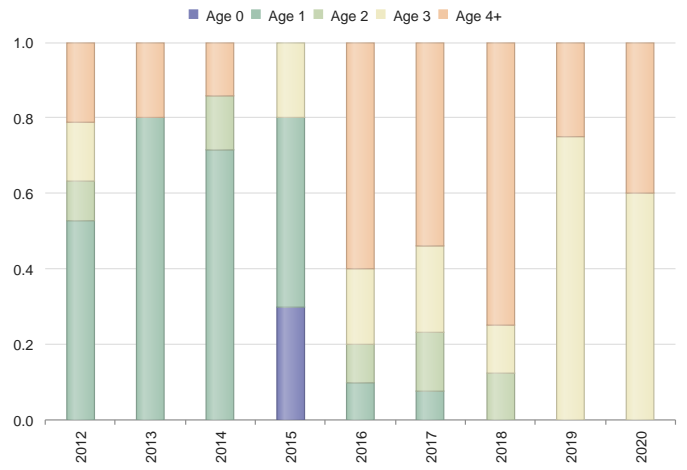
Comments

Main Beam Lengths by Age



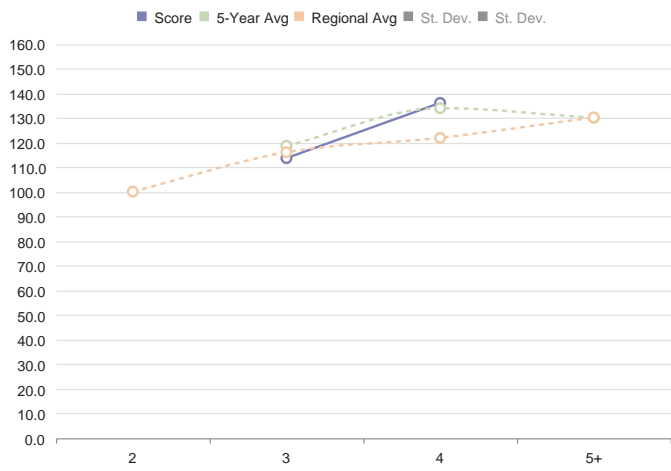
Comments

% Bucks by Age Class



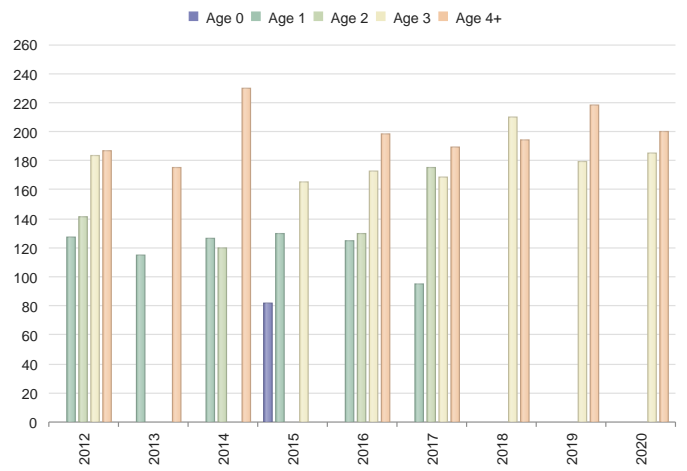
Comments

Criteria B&C Score by Age



Comments

Buck Live Weights



Comments

