

DMAP Reports - phil bryant wma - 2020

BIOLOGIST RogerT COUNTY Issaquena County, MS

ACRES 13311 YEARS ON DMAP 29 SOIL REGION Delta

Introductory Comments

Harvest Summary

	Recommended Harvest	Number Harvested	Acres/Deer Harvested	% Data Collected
Bucks		95	140	100
Does		81	164	100
Totals		176	75	100

Comments

Club Map

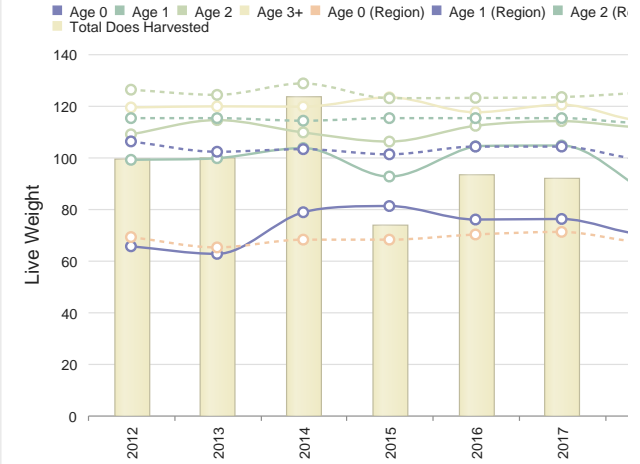
Comments

Harvest History

	Region Avg	2020	2019	2018	2017	2016	2015	2014	2013	2012	2011	2010	2009	200
Acres	4740 15843	13311	16509	0	16509	16509	16509	16547	16000	16651	15887	15835	164	
Total Deer	32.9 265	176	48	0	286	291	193	312	225	266	267	274	212	2
Bucks	13.3 125	95	25	0	130	128	70	103	58	100	114	142	118	1
Does	19.6 139	81	23	0	156	163	123	209	167	166	153	132	94	1
Acres/Deer	144 59	75	343	N/A	57	56	85	52	73	60	62	57	74	
Bucks	355 126	140	660	N/A	126	128	235	160	285	160	146	111	134	1
Does	242 113	164	717	N/A	105	101	134	78	99	96	108	120	168	1

Comments

Doe Weights with Harvest



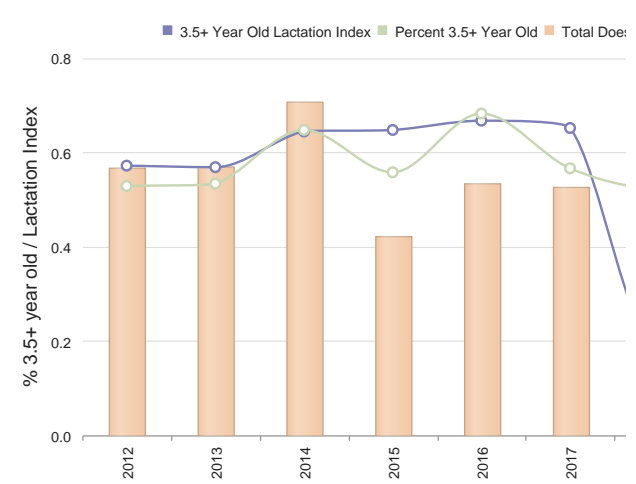
Comments

Buck Harvest History

	2010-2020	Region Avg	2020	2019	2018	2017	2016	2015	2014	2013	2012	2011	2010	2009	2008	20	
Bucks	87	13.3	129.8	95	25	0	130	128	70	103	58	100	114	142	118	112	1
Acres/Buck	215	369.0	152.9	140	660	N/A	126	128	235	160	285	160	146	111	134	147	1
% .5 Bucks	1	2.4	1.8	4	N/A	N/A	1	0	N/A	3	N/A	1	N/A	N/A	N/A	N/A	
# .5 Bucks	1	0.4	3.0	4	0	0	2	1	0	4	0	1	0	0	0	0	
Avg Weight	72	72.8	73.2	68	N/A	N/A	71	56	N/A	70	N/A	95	N/A	N/A	N/A	N/A	
% 1.5 Bucks	1	5.2	11.1	N/A	4	N/A	0	0	5	0	3	3	1	1	N/A	6	
# 1.5 Bucks	1	0.8	17.4	0	1	0	1	1	4	1	2	3	2	2	0	7	
% Spikes	100	67.4	73.6	N/A	100	N/A	100	100	100	100	100	100	100	100	N/A	85	1
Avg Weight	108	122.2	120.0	N/A	80	N/A	100	126	111	126	90	91	109	143	N/A	97	1
Avg Points	1	2.6	2.4	N/A	2.0	N/A	2.0	2.0	0.5	2.0	1.0	0.0	0.0	2.0	N/A	1.3	1
Avg Base	0	1.6	1.3	N/A	0.0	N/A	1.5	1.9	0.4	1.0	0.5	0.0	0.0	0.4	N/A	0.3	0
Avg Length	0	5.1	3.8	N/A	0.0	N/A	3.9	1.3	0.3	0.9	1.5	0.0	0.0	0.8	N/A	1.3	1
Avg Spread	2	4.6	4.2	N/A	0.0	N/A	4.0	6.1	0.0	4.0	2.0	0.0	0.0	4.5	N/A	1.0	0
% 2.5 Bucks	5	9.6	28.3	3	16	N/A	1	2	2	4	5	7	10	2	6	8	
# 2.5 Bucks	4	1.3	44.6	3	4	0	2	3	2	5	3	7	12	3	8	9	
Avg Weight	170	168.2	169.4	173	197	N/A	179	171	167	168	173	157	173	149	183	169	1
Avg Points	7	7.0	7.6	8.7	8.5	N/A	7.5	7.7	6.0	7.2	8.0	8.0	7.9	8.0	8.0	7.8	1
Avg Base	3	3.4	3.5	3.6	4.6	N/A	4.1	3.6	2.9	4.0	3.8	3.8	3.8	3.4	3.8	3.4	1
Avg Length	16	15.7	15.8	18.3	18.1	N/A	15.9	17.3	13.3	15.1	18.3	17.0	17.7	15.7	17.3	16.3	11
Avg Spread	14	13.6	13.4	15.5	16.3	N/A	15.1	14.8	12.9	12.6	16.0	14.3	15.1	12.2	14.9	14.2	10
% 3.5 Bucks	30	27.8	30.2	42	40	N/A	26	10	18	19	36	38	30	45	49	44	
# 3.5 Bucks	26	3.7	36.4	40	10	0	35	13	13	20	21	38	35	65	58	50	
Avg Weight	187	187.8	188.6	191	191	N/A	185	188	172	182	195	179	192	200	186	191	1
Avg Points	7	8.2	8.2	8.2	8.3	N/A	7.7	8.1	8.8	7.9	8.1	8.3	8.5	9.0	8.2	8.2	8
Avg Base	3	4.1	4.1	4.3	4.1	N/A	4.1	3.8	3.7	4.1	4.2	4.1	4.4	4.2	4.3	4.2	4
Avg Length	18	18.6	18.4	19.9	18.8	N/A	18.9	18.7	17.9	18.1	20.1	18.8	19.9	20.2	19.7	18.8	15
Avg Spread	15	15.2	15.0	16.2	16.8	N/A	15.8	14.6	14.8	15.0	14.1	16.0	15.6	16.0	15.5	15.0	15
% 4.5+ Bucks	59	49.6	36.9	50	40	N/A	68	85	71	70	55	51	57	50	44	41	
# 4.5+ Bucks	54	6.8	33.2	48	10	0	89	110	50	73	32	51	65	72	52	46	
Avg Weight	197	198.4	197.0	201	199	N/A	197	194	192	195	187	201	204	206	195	198	1
Avg Points	8	8.5	8.3	9.1	7.5	N/A	8.4	8.4	8.0	8.5	8.2	8.7	8.6	8.6	8.8	8.5	1
Avg Base	4	4.5	4.4	4.6	4.2	N/A	4.5	4.5	4.3	4.5	4.7	4.4	4.6	4.7	4.7	4.5	4
Avg Length	19	20.1	19.9	19.9	18.7	N/A	20.8	20.1	20.1	20.4	20.1	20.8	21.2	21.3	20.9	20.3	20
Avg Spread	15	16.2	15.8	16.8	16.9	N/A	15.9	15.9	16.3	16.5	14.5	17.1	16.9	15.7	16.3	15.9	15

Comments

Doe Age Structure in Relation to Harvest and Lactation Rates



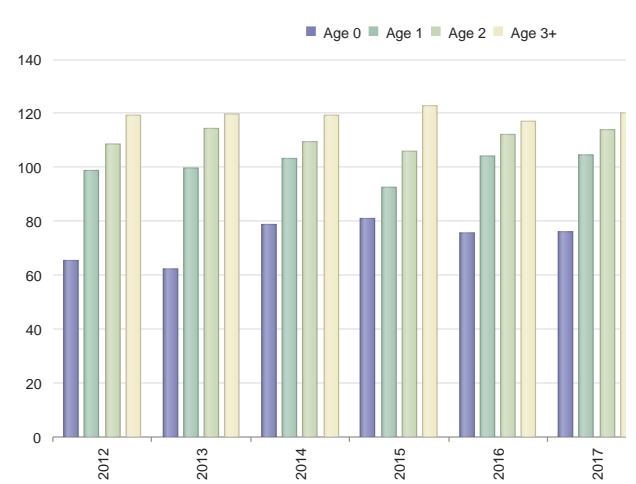
Comments

Doe Harvest History

	2010-2020	Region Avg	2020	2019	2018	2017	2016	2015	2014	2013	2012	2011	2010	2009	2008	2007	
Does	124	19.6	144.4	81	23	0	156	163	123	209	167	166	153	132	94	100	18
Acres/Doe	171	271.8	139.7	164	717	105	101	134	78	99	96	108	120	168	164	88	11
% .5 Does	4	8.4	5.5	16	8	N/A	2	5	0	2	1	4	0	3	5	N/A	
# .5 Does	4	1.9	7.8	13	2	0	4	9	1	5	2	7	1	4	5	0	1
Avg Weight	70	70.6	69.1	76	70	N/A	76	75	81	78	62	65	55	71	70	N/A	6
% 1.5 Does	15	17.2	18.6	N/A	8	N/A	20	12	17	10	22	19	16	17	7	19	2
# 1.5 Does	19	3.6	28.5	0	2	0	N/A	32	20	22	21	37	33	26	23	7	1
Avg Weight	99	101.8	103.9	N/A	86	N/A	104	104	92	103	99	98	99	108	101	104	10
% 2.5 Does	25	19.4	27.6	27	34	N/A	21	17	26	24	23	25	39	17	30	28	2
# 2.5 Does	31	3.8	40.1	22	8	0	34	29	32	51	40	42	60	23	29	29	5
Avg Weight	112	113.8	116.5	113	111	N/A	113	112	105	109	114	108	117	123	115	119	11
% 3.5+ Does	54	51.8	47.8	56	47	N/A	55	64	55	63	52	50	43	62	56	52	4
# 3.5+ Does	69	10.1	69.6	46	11	0	86	105	68	132	88	84	66	82	53	52	8
Avg Weight	119	121.2	123.6	120	113	N/A	119	116	122	118	119	118	126	126	124	125	12
% Lactation	NaN	N/A	-	-	-	-	-	-	-	-	-	-	-	-	-	-	-
1.5	9	10.8	12.8	N/A	0	N/A	12	15	9	4	5	9	7	26	28	0	1
2.5	49	46.0	54.5	50	0	N/A	55	51	43	49	42	61	65	78	62	20	5
2.5+	54	52.2	59.7	60	10	N/A	62	63	57	60	52	58	58	65	67	34	6
3.5+	57	54.4	64.2	65	18	N/A	65	66	64	64	56	57	53	62	69	42	6

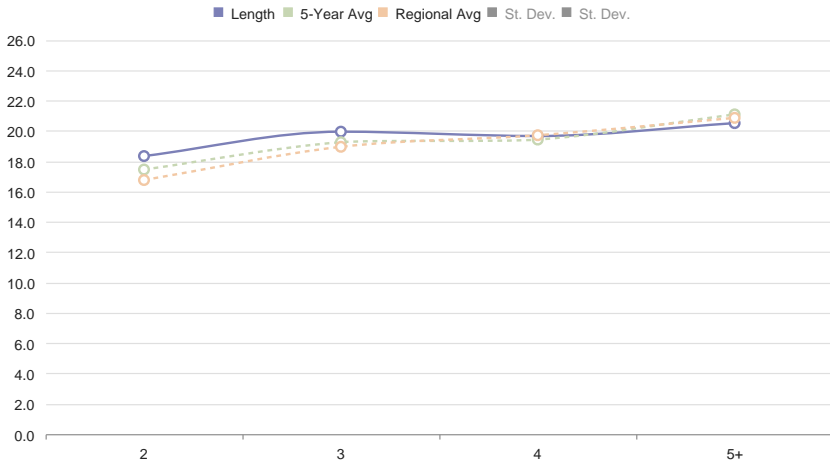
Comments

Doe Live Weights



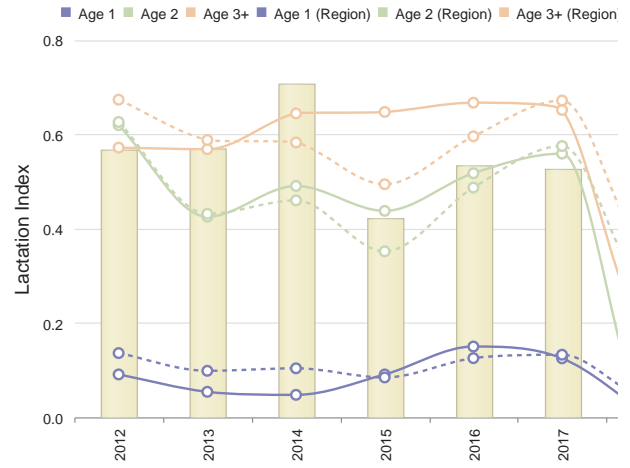
Comments

Main Beam Lengths by Age



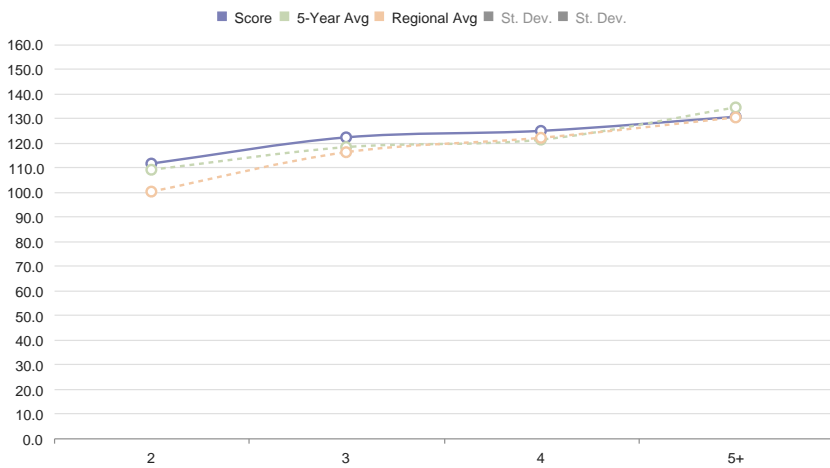
Comments

% Doe Lactation



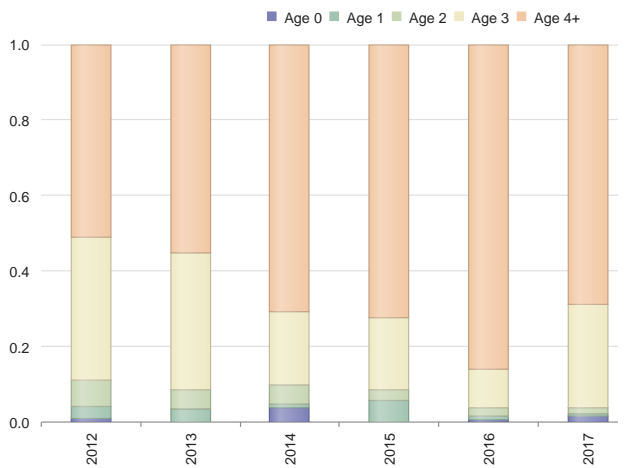
Comments

Criteria B&C Score by Age



Comments

% Bucks by Age Class



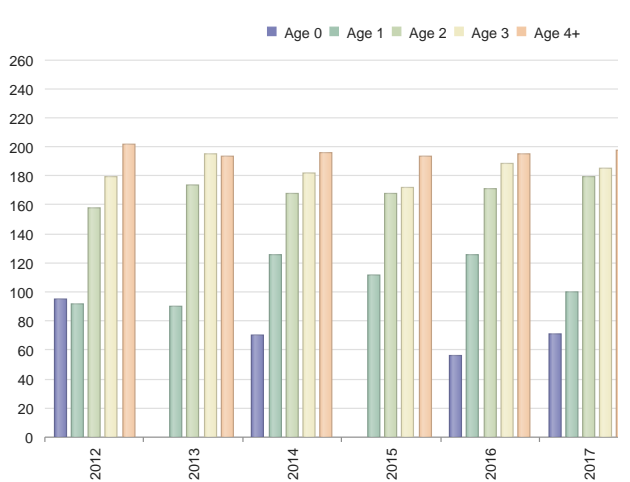
Comments

Criteria Buck Estimated B&C Scores

Estimated Non-typical B&C Score				
Age	Num	At Harvest	At Maturity (Min)	At Maturity (Max)
2.5	3	111 4/8	144 6/8	181 2/8
3.5	40	122 1/8	134 1/8	155 4/8
4.5	34	124 6/8	127 2/8	136 2/8
5.5+	14	130 3/8	130 3/8	130 3/8

Comments

Buck Live Weights



Comments

