

DMAP Reports - Mahannah WMA - 2020

NRIS ID 7002 DMAP ID 9348

BIOLOGIST RogerT COUNTY Issaquena County, MS

ACRES 12600 YEARS ON DMAP 27 SOIL REGION Delta

Introductory Comments

Harvest Summary

| | Recommended Harvest | Number Harvested | Acres/Deer Harvested | % Data Collected |
|--------|---------------------|------------------|----------------------|------------------|
| Bucks | 0 - 0 | 33 | 381 | 100 |
| Does | 0 - 0 | 19 | 663 | 100 |
| Totals | | 52 | 242 | 100 |

Comments

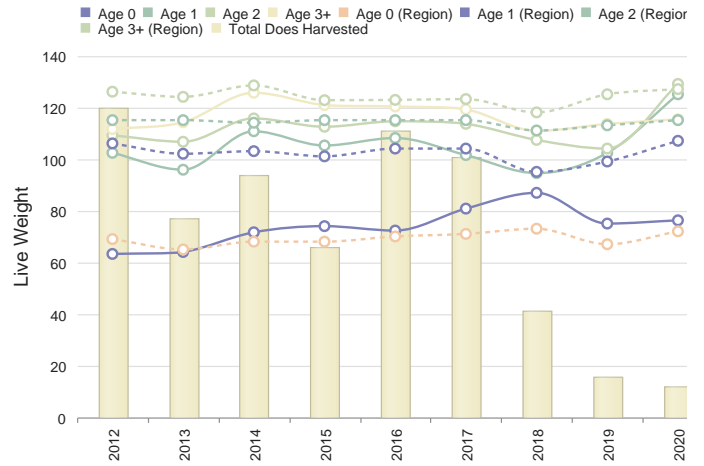
Harvest History

| | Region Avg | 2020 | 2019 | 2018 | 2017 | 2016 | 2015 | 2014 | 2013 | 2012 | 2011 | 2010 |
|------------|------------|-------|-------|-------|-------|-------|-------|-------|-------|-------|-------|-------|
| Acres | 32552.2 | 12600 | 12600 | 12600 | 12600 | 12600 | 12600 | 12600 | 12600 | 12600 | 12600 | 12600 |
| Total Deer | 2448.2 | 142 | 52 | 40 | 102 | 234 | 247 | 146 | 220 | 149 | 273 | 233 |
| Bucks | 1001.2 | 48 | 33 | 19 | 32 | 97 | 93 | 61 | 89 | 41 | 106 | 93 |
| Does | 1447.0 | 94 | 19 | 21 | 70 | 137 | 154 | 85 | 131 | 108 | 167 | 141 |
| Acres/Deer | 132 | 88 | 242 | 315 | 123 | 53 | 51 | 86 | 57 | 84 | 46 | 51 |
| Bucks | 325 | 261 | 381 | 663 | 393 | 129 | 135 | 206 | 141 | 307 | 118 | 135 |
| Does | 224 | 133 | 663 | 600 | 180 | 91 | 81 | 148 | 96 | 116 | 75 | 82 |

Comments

Club Map

Doe Weights with Harvest



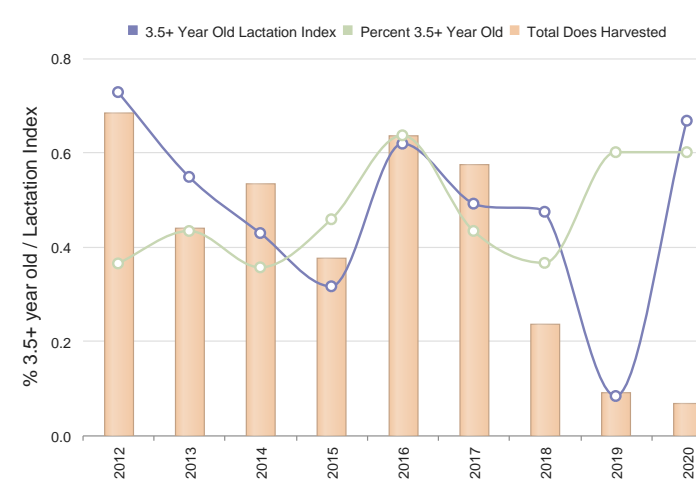
Comments

Buck Harvest History

| | Region Avg | | 2020 | 2019 | 2018 | 2017 | 2016 | 2015 | 2014 | 2013 | 2012 | 2011 | 2010 | 2009 | 2008 |
|--------------|------------|-------|------|------|------|------|------|------|------|------|------|------|------|------|------|
| Bucks | 1001.2 | 54.2 | 33 | 19 | 32 | 97 | 93 | 61 | 89 | 41 | 106 | 93 | 92 | 40 | 75 |
| Acres/Buck | 346.8 | 298.6 | 381 | 663 | 393 | 129 | 135 | 206 | 141 | 307 | 118 | 135 | 136 | 315 | 172 |
| % .5 Bucks | 2.4 | 6.3 | 3 | N/A | 6 | N/A | 4 | 3 | 5 | 2 | 0 | 2 | N/A | 7 | N/A |
| # .5 Bucks | 30.0 | 2.8 | 1 | 0 | 2 | 0 | 4 | 2 | 5 | 1 | 1 | 2 | 0 | 3 | 0 |
| Avg Weight | 72.8 | 67.5 | 60 | N/A | 112 | N/A | 57 | 102 | 73 | 75 | 60 | 60 | N/A | 55 | N/A |
| % 1.5 Bucks | 5.2 | 23.4 | N/A | 5 | 28 | 27 | 17 | 22 | 28 | 26 | 30 | 33 | 23 | 30 | 64 |
| # 1.5 Bucks | 56.6 | 14.8 | 0 | 1 | 9 | 27 | 16 | 14 | 25 | 11 | 32 | 31 | 22 | 12 | 47 |
| % Spikes | 67.4 | 69.8 | N/A | 100 | 66 | 70 | 62 | 92 | 80 | 90 | 56 | 67 | 81 | 50 | 85 |
| Avg Weight | 122.2 | 119.5 | N/A | 100 | 114 | 118 | 133 | 113 | 124 | 105 | 121 | 126 | 125 | 126 | 122 |
| Avg Points | 2.6 | 2.5 | N/A | 2.0 | 2.6 | 2.3 | 3.0 | 1.9 | 2.4 | 1.9 | 3.3 | 2.5 | 2.4 | 2.5 | 2.3 |
| Avg Base | 1.6 | 1.5 | N/A | 3.0 | 1.6 | 1.4 | 1.5 | 0.6 | 1.5 | 1.0 | 1.5 | 1.5 | 1.1 | 1.4 | 1.6 |
| Avg Length | 5.1 | 4.3 | N/A | 3.0 | 4.7 | 4.5 | 4.5 | 1.4 | 4.9 | 3.0 | 6.0 | 4.1 | 3.5 | 4.4 | 4.4 |
| Avg Spread | 4.6 | 3.7 | N/A | 3.0 | 5.1 | 3.6 | 4.3 | 1.1 | 4.4 | 2.5 | 4.9 | 3.8 | 3.2 | 4.2 | 3.5 |
| % 2.5 Bucks | 9.6 | 23.2 | 15 | 21 | 28 | 14 | 12 | 11 | 20 | 7 | 22 | 12 | 4 | 27 | 5 |
| # 2.5 Bucks | 96.6 | 11.1 | 5 | 4 | 9 | 14 | 12 | 7 | 18 | 3 | 24 | 12 | 4 | 11 | 4 |
| Avg Weight | 168.2 | 162.1 | 177 | 190 | 122 | 163 | 170 | 168 | 157 | 125 | 153 | 156 | 168 | 166 | 177 |
| Avg Points | 7.0 | 6.5 | 6.0 | 6.8 | 6.7 | 6.8 | 6.0 | 7.0 | 5.7 | 3.0 | 7.3 | 6.8 | 7.0 | 4.8 | 6.0 |
| Avg Base | 3.4 | 3.3 | 3.8 | 3.3 | 2.7 | 3.5 | 3.3 | 3.3 | 2.9 | 2.5 | 3.2 | 3.5 | 3.0 | 2.5 | 3.1 |
| Avg Length | 15.7 | 14.4 | 15.9 | 14.9 | 13.1 | 16.3 | 14.9 | 15.8 | 13.3 | 10.0 | 15.1 | 13.8 | 14.3 | 13.7 | 12.8 |
| Avg Spread | 13.6 | 12.4 | 16.2 | 13.0 | 10.9 | 15.3 | 12.8 | 13.8 | 10.8 | 9.8 | 12.2 | 11.0 | 12.0 | 11.0 | 11.5 |
| % 3.5 Bucks | 27.8 | 27.8 | 33 | 36 | 25 | 26 | 20 | 26 | 22 | 31 | 32 | 24 | 33 | 20 | 15 |
| # 3.5 Bucks | 273.8 | 148.3 | 11 | 7 | 8 | 26 | 19 | 16 | 20 | 13 | 34 | 23 | 31 | 8 | 11 |
| Avg Weight | 187.8 | 189.3 | 199 | 184 | 195 | 193 | 185 | 194 | 197 | 193 | 178 | 189 | 197 | 198 | 186 |
| Avg Points | 8.2 | 8.4 | 8.0 | 8.3 | 8.1 | 8.0 | 7.2 | 8.2 | 8.1 | 7.3 | 7.6 | 8.0 | 7.8 | 8.6 | 7.7 |
| Avg Base | 4.1 | 4.1 | 4.3 | 4.0 | 4.1 | 4.4 | 3.8 | 4.0 | 4.1 | 4.1 | 4.2 | 4.1 | 3.8 | 4.3 | 4.4 |
| Avg Length | 18.6 | 18.5 | 20.2 | 19.3 | 19.6 | 19.7 | 16.5 | 17.1 | 18.5 | 18.1 | 18.4 | 17.7 | 18.3 | 18.9 | 18.8 |
| Avg Spread | 15.2 | 15.6 | 16.6 | 17.3 | 14.8 | 16.5 | 14.1 | 15.4 | 15.9 | 15.3 | 15.1 | 14.2 | 15.9 | 17.0 | 16.2 |
| % 4.5+ Bucks | 49.6 | 21.5 | 48 | 36 | 12 | 23 | 45 | 36 | 20 | 19 | 8 | 17 | 34 | 15 | 9 |
| # 4.5+ Bucks | 518.6 | 12.1 | 16 | 7 | 4 | 23 | 42 | 22 | 18 | 8 | 9 | 16 | 32 | 6 | 7 |
| Avg Weight | 198.4 | 200.0 | 200 | 194 | 202 | 191 | 209 | 201 | 200 | 186 | 189 | 211 | 210 | 215 | 202 |
| Avg Points | 8.5 | 8.3 | 8.1 | 8.0 | 9.0 | 8.0 | 8.0 | 8.0 | 8.1 | 8.6 | 8.6 | 7.9 | 8.5 | 8.8 | 7.3 |
| Avg Base | 4.5 | 4.4 | 4.2 | 4.6 | 4.7 | 3.9 | 4.3 | 4.2 | 4.3 | 4.6 | 5.1 | 4.7 | 4.5 | 4.6 | 3.9 |
| Avg Length | 20.1 | 19.7 | 20.2 | 20.0 | 20.8 | 19.2 | 20.2 | 19.5 | 19.6 | 20.6 | 20.5 | 20.7 | 19.9 | 21.4 | 16.8 |
| Avg Spread | 16.2 | 16.4 | 16.9 | 17.5 | 17.6 | 16.4 | 16.7 | 16.5 | 16.6 | 16.4 | 15.8 | 17.6 | 15.5 | 17.3 | 14.5 |

Comments

Doe Age Structure in Relation to Harvest and Lactation Rates



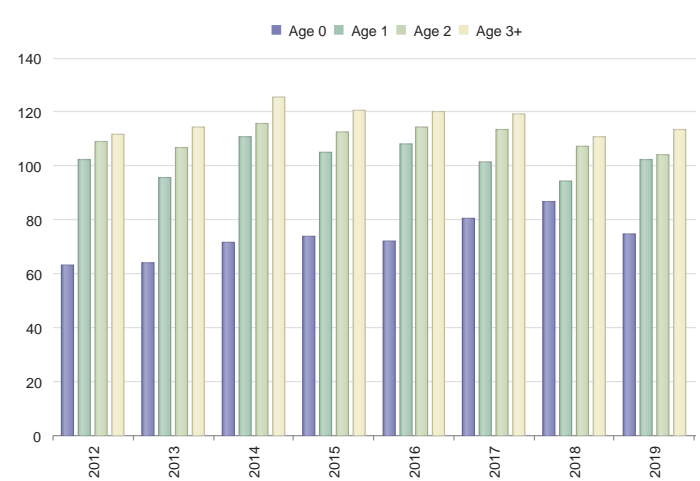
Comments

Doe Harvest History

| | Region Avg | | 2020 | 2019 | 2018 | 2017 | 2016 | 2015 | 2014 | 2013 | 2012 | 2011 | 2010 | 2009 | 2008 |
|-------------|------------|-------|------|------|------|------|------|------|------|------|------|------|------|------|------|
| Does | 1447.0 | 101.6 | 19 | 21 | 70 | 137 | 154 | 85 | 131 | 108 | 167 | 153 | 141 | 138 | 125 |
| Acres/Doe | 252.2 | 175.1 | 663 | 600 | 180 | 91 | 81 | 148 | 96 | 116 | 75 | 82 | 89 | 91 | 100 |
| % .5 Does | 8.4 | 7.6 | 21 | 4 | 25 | 6 | 9 | 2 | 9 | 9 | 9 | 4 | 13 | 18 | 3 |
| # .5 Does | 138.2 | 8.3 | 4 | 1 | 18 | 9 | 14 | 2 | 13 | 10 | 16 | 7 | 19 | 25 | 4 |
| Avg Weight | 70.6 | 67.5 | 76 | 75 | 86 | 80 | 72 | 74 | 71 | 64 | 63 | 76 | 76 | 58 | 61 |
| % 1.5 Does | 17.2 | 21.7 | 5 | 14 | 8 | 33 | 14 | 30 | 22 | 25 | 28 | 24 | 30 | 11 | 40 |
| # 1.5 Does | 260.4 | 23.8 | 1 | 3 | 6 | 46 | 23 | 26 | 30 | 28 | 47 | 38 | 43 | 16 | 51 |
| Avg Weight | 101.8 | 102.3 | 125 | 102 | 94 | 101 | 108 | 105 | 110 | 95 | 102 | 109 | 104 | 104 | 103 |
| % 2.5 Does | 19.4 | 27.2 | 26 | 23 | 38 | 18 | 18 | 22 | 35 | 25 | 29 | 27 | 9 | 33 | 31 |
| # 2.5 Does | 280.2 | 28.1 | 5 | 5 | 27 | 26 | 28 | 19 | 46 | 27 | 49 | 42 | 14 | 46 | 39 |
| Avg Weight | 113.8 | 112.7 | 129 | 104 | 107 | 113 | 114 | 112 | 115 | 106 | 109 | 115 | 115 | 116 | 115 |
| % 3.5+ Does | 51.8 | 42.7 | 47 | 57 | 27 | 40 | 57 | 44 | 32 | 38 | 32 | 43 | 46 | 36 | 24 |
| # 3.5+ Does | 755.4 | 42.6 | 9 | 12 | 19 | 55 | 89 | 38 | 42 | 42 | 55 | 66 | 65 | 51 | 30 |
| Avg Weight | 121.2 | 119.2 | 114 | 114 | 110 | 118 | 119 | 120 | 124 | 113 | 111 | 120 | 127 | 121 | 128 |
| % Lactation | N/A | - | - | - | - | - | - | - | - | - | - | - | - | - | - |
| 1.5 | 10.8 | 12.3 | 0 | 0 | 0 | 8 | 21 | 3 | 0 | 10 | 10 | 0 | 2 | 25 | 0 |
| 2.5 | 46.0 | 56.1 | 100 | 40 | 33 | 42 | 67 | 36 | 36 | 22 | 57 | 42 | 57 | 67 | 33 |
| 2.5+ | 52.2 | 60.0 | 78 | 17 | 39 | 46 | 63 | 33 | 39 | 42 | 65 | 46 | 64 | 71 | 37 |
| 3.5+ | 54.4 | 62.9 | 66 | 8 | 47 | 49 | 61 | 31 | 42 | 54 | 72 | 48 | 66 | 74 | 43 |

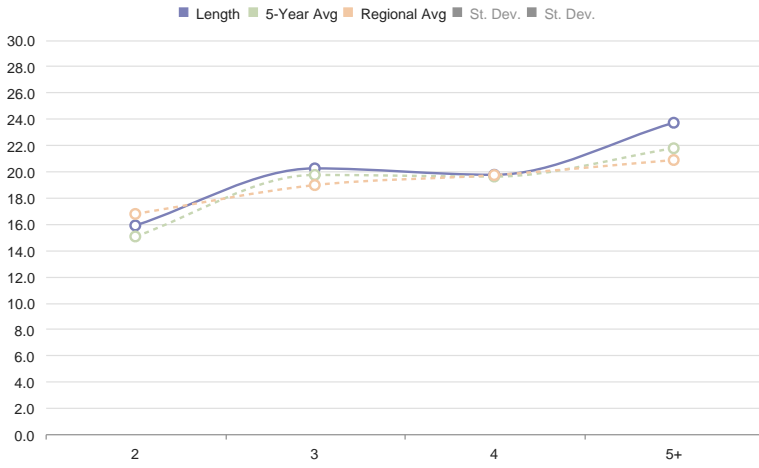
Comments

Doe Live Weights



Comments

Main Beam Lengths by Age



Comments

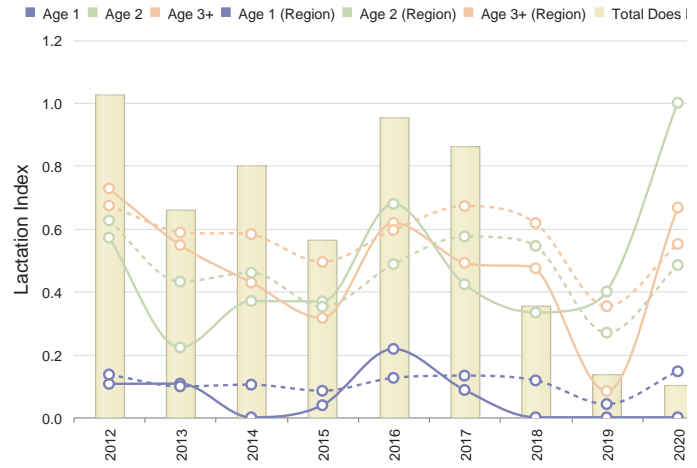
Criteria Buck Estimated B&C Scores

| Estimated Non-typical B&C Score | | | | |
|---------------------------------|-----|------------|-------------------|-------------------|
| Age | Num | At Harvest | At Maturity (Min) | At Maturity (Max) |
| 2.5 | 5 | 96 7/8 | 125 6/8 | 157 3/8 |
| 3.5 | 11 | 123 5/8 | 135 7/8 | 157 4/8 |
| 4.5 | 14 | 121 7/8 | 124 3/8 | 133 2/8 |
| 5.5+ | 2 | 140 4/8 | 140 4/8 | 140 4/8 |

Comments

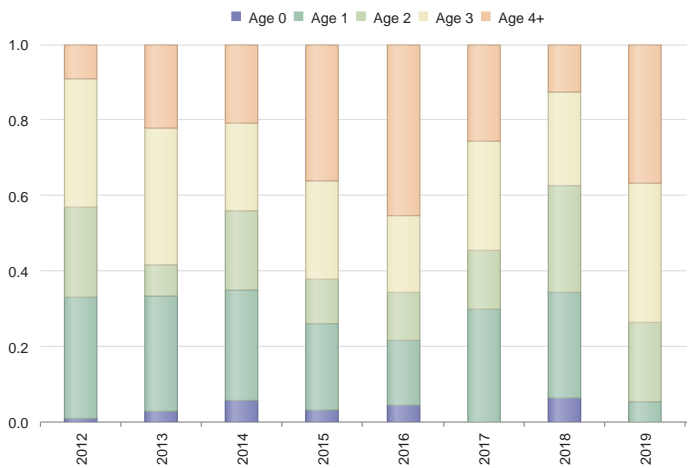
Management Buck B&C Score by Age

% Doe Lactation



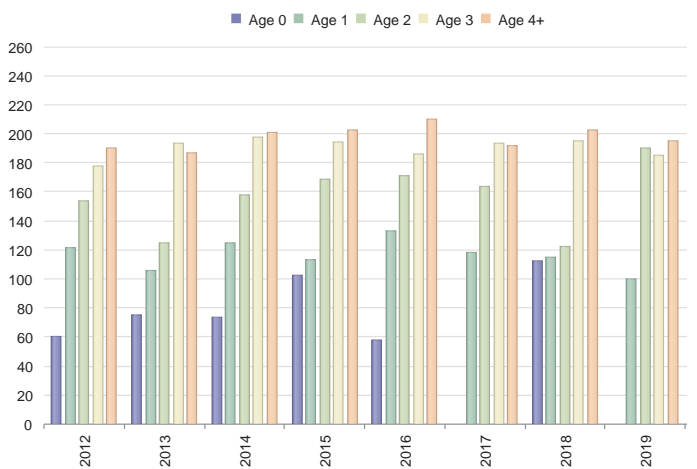
Comments

% Bucks by Age Class



Comments

Buck Live Weights



Comments

Management Buck Estimated B&C Scores

Recommended Harvest (Next Season)

Minimum Number Known Alive (MNKA)

Attachments

Population Reconstruction

