

# DMAP Reports - Sunflower WMA - 2020

NRIS ID 7006 DMAP ID 9394

BIOLOGIST RogerT COUNTY Sharkey County, MS

ACRES 60000 YEARS ON DMAP 30 SOIL REGION Delta

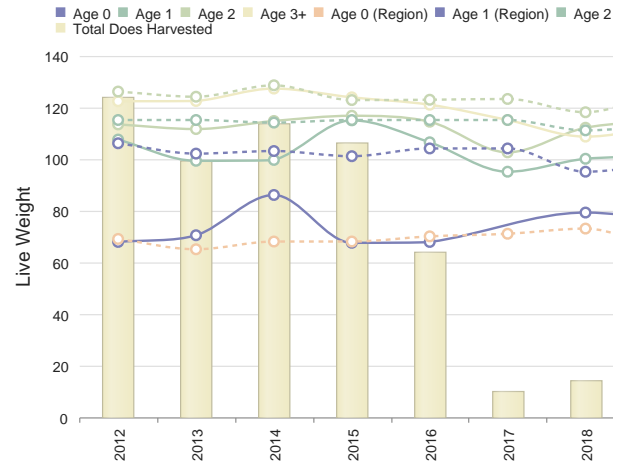
Introductory Comments

Harvest Summary

	Recommended Harvest	Number Harvested	Acres/Deer Harvested	% Data Collected
Bucks	0 - 0	73	821	101
Does	0 - 0	33	1818	97
Totals		106	566	100

Comments

Doe Weights with Harvest



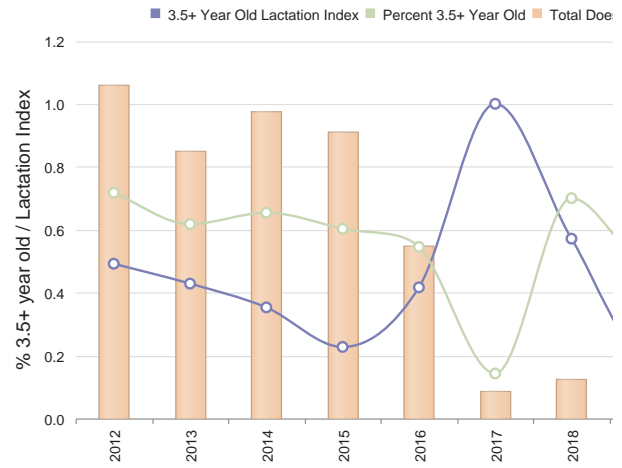
Comments

Harvest History

	Region Avg	2020	2019	2018	2017	2016	2015	2014	2013	2012	2011	2010	2009	2008
Acres	32552.2	58885	60000	60000	60000	60000	60000	60000	60000	60000	60000	58240	58240	58240
Total Deer	2448.2	121	106	49	90	124	177	166	153	148	180	91	62	78
Bucks	1001.2	60	73	39	75	117	127	81	59	73	75	51	24	36
Does	1447.0	61	33	10	15	7	50	85	94	75	105	40	38	42
Acres/Deer	132	483	566	1224	666	483	338	361	392	405	333	659	939	746
Bucks	325	979	821	1538	800	512	472	740	1016	821	800	1176	2426	1617
Does	224	955	1818	6000	4000	8571	1200	705	638	800	571	1500	1532	1386

Comments

Doe Age Structure in Relation to Harvest and Lactation Rates



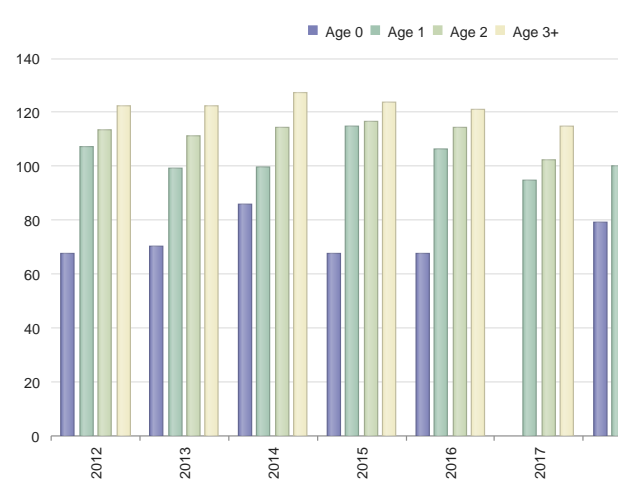
Comments

Buck Harvest History

	Region Avg		2020	2019	2018	2017	2016	2015	2014	2013	2012	2011	2010	2009	2008	2007
Bucks	1001.2	62.2	73	39	75	117	127	81	59	73	75	51	24	36	16	33
Acres/Buck	346.8	2494.5	821	1538	800	512	472	740	1016	821	800	1176	2426	1617	3640	1764
% .5 Bucks	2.4	5.1	2	N/A	1	N/A	N/A	1	6	4	1	3	4	2	N/A	N/A
# .5 Bucks	30.0	4.9	2	0	1	0	0	1	4	3	1	2	1	1	0	0
Avg Weight	72.8	64.6	65	N/A	60	N/A	N/A	55	76	70	65	70	70	45	N/A	N/A
% 1.5 Bucks	5.2	25.0	N/A	5	10	13	7	13	11	19	10	13	4	5	37	18
# 1.5 Bucks	56.6	20.6	0	2	8	16	10	11	7	14	8	7	1	2	6	6
% Spikes	67.4	56.9	N/A	100	50	25	70	36	100	85	62	57	0	50	66	50
Avg Weight	122.2	128.0	N/A	97	126	129	134	137	118	121	132	121	144	135	123	131
Avg Points	2.6	3.4	N/A	2.0	3.5	4.4	2.8	4.1	1.7	2.6	2.9	2.6	3.0	3.0	2.3	3.5
Avg Base	1.6	2.1	N/A	1.0	2.9	2.6	2.3	2.1	0.4	1.3	2.3	1.7	3.1	0.0	2.1	2.4
Avg Length	5.1	6.5	N/A	1.6	7.3	8.4	5.6	6.2	6.0	5.4	6.4	5.6	6.7	8.5	5.3	8.0
Avg Spread	4.6	6.2	N/A	3.9	8.0	7.7	6.5	6.9	2.1	4.9	6.6	5.0	7.5	7.3	5.6	6.9
% 2.5 Bucks	9.6	25.9	5	12	18	27	15	9	20	13	36	31	4	19	18	18
# 2.5 Bucks	96.6	15.9	4	5	14	32	20	8	12	10	27	16	1	7	3	6
Avg Weight	168.2	167.5	214	169	168	169	164	155	155	162	163	169	173	172	159	149
Avg Points	7.0	6.9	8.5	6.2	7.0	7.0	6.8	5.9	6.5	6.5	7.6	7.1	6.0	8.4	7.3	7.0
Avg Base	3.4	3.3	4.3	3.4	3.3	3.7	3.7	2.9	3.0	2.0	3.1	3.2	2.7	3.6	5.1	3.4
Avg Length	15.7	14.8	18.8	15.3	15.5	15.7	15.6	13.6	12.1	8.3	14.7	14.9	14.1	16.0	16.9	15.6
Avg Spread	13.6	12.8	15.6	11.8	14.3	13.7	14.7	12.4	11.2	10.3	13.5	13.0	12.1	13.1	13.0	14.1
% 3.5 Bucks	27.8	27.8	45	43	44	41	23	17	23	39	36	35	58	52	37	21
# 3.5 Bucks	273.8	15.0	33	17	33	49	30	14	14	29	27	18	14	19	6	7
Avg Weight	187.8	187.0	184	174	188	183	176	162	174	168	178	189	196	187	161	186
Avg Points	8.2	7.7	7.9	7.1	8.3	7.9	7.6	6.9	6.9	7.1	7.3	7.5	8.2	8.4	8.2	7.6
Avg Base	4.1	3.8	4.1	4.0	4.0	4.2	3.8	3.1	3.1	3.1	3.6	3.4	3.7	3.9	3.4	4.4
Avg Length	18.6	17.3	18.4	15.9	17.8	18.7	17.1	16.5	14.9	16.1	16.4	17.4	18.5	18.3	15.6	18.2
Avg Spread	15.2	14.7	14.9	14.4	15.4	15.0	13.7	14.1	13.4	13.5	14.0	14.4	15.3	15.5	13.9	16.1
% 4.5+ Bucks	49.6	24.7	46	35	25	16	48	51	33	23	14	15	29	19	6	42
# 4.5+ Bucks	518.6	12.5	34	14	19	19	61	42	20	17	11	8	7	7	1	14
Avg Weight	198.4	197.9	197	196	203	204	187	181	185	190	200	207	201	194	232	195
Avg Points	8.5	8.2	8.1	8.0	8.3	8.0	8.0	8.0	7.2	8.2	7.9	7.0	7.6	8.1	8.0	8.7
Avg Base	4.5	4.2	4.2	3.9	4.5	4.9	4.6	4.4	3.9	3.1	4.4	4.3	4.1	3.4	4.1	4.9
Avg Length	20.1	19.6	18.1	18.7	19.8	20.8	18.2	17.4	19.2	16.1	18.5	19.8	17.2	19.2	22.5	20.6
Avg Spread	16.2	16.3	16.1	14.8	16.0	15.6	16.4	14.9	15.9	15.3	16.3	17.6	13.4	16.4	22.0	16.5

Comments

Doe Live Weights



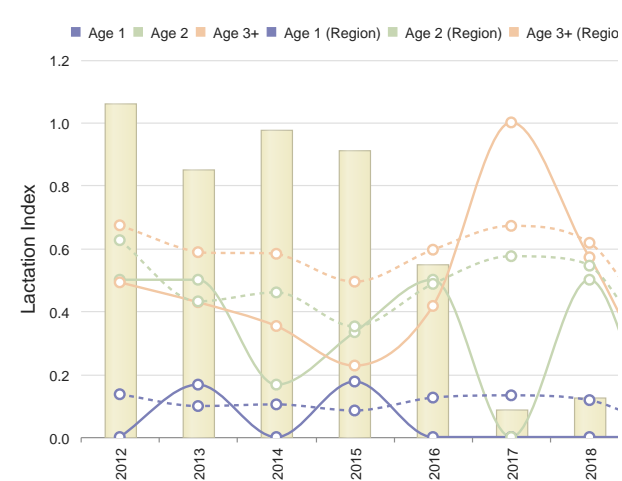
Comments

Doe Harvest History

	Region Avg		2020	2019	2018	2017	2016	2015	2014	2013	2012	2011	2010	2009	2008	2007
Does	1447.0	63.8	33	10	15	7	50	85	94	75	105	40	38	42	26	29
Acres/Doe	252.2	2330.1	1818	6000	4000	8571	1200	705	638	800	571	1500	1532	1386	2240	2008
% .5 Does	8.4	11.6	21	N/A	33	N/A	12	12	14	9	18	17	5	4	N/A	N/A
# .5 Does	138.2	8.8	7	0	5	0	6	11	14	7	19	7	2	2	0	0
Avg Weight	70.6	67.1	69	N/A	79	N/A	67	67	86	70	67	66	58	77	N/A	N/A
% 1.5 Does	17.2	19.6	3	40	6	28	16	20	9	24	13	17	18	9	26	24
# 1.5 Does	260.4	12.4	1	4	1	2	8	17	9	18	14	7	7	4	7	7
Avg Weight	101.8	101.8	100	100	100	95	106	114	99	99	107	103	111	98	95	102
% 2.5 Does	19.4	24.1	30	10	13	57	24	14	19	10	9	10	15	33	26	17
# 2.5 Does	280.2	16.6	10	1	2	4	12	12	18	8	10	4	6	14	7	5
Avg Weight	113.8	116.2	110	114	112	102	114	116	114	111	113	102	120	108	120	115
% 3.5+ Does	51.8	48.4	45	50	46	14	48	51	54	56	58	55	60	52	46	58
# 3.5+ Does	755.4	29.6	15	5	7	1	24	44	51	42	61	22	23	22	12	17
Avg Weight	121.2	123.3	129	114	108	115	119	122	126	121	121	121	126	120	120	128
% Lactation	N/A	-	-	-	-	-	-	-	-	-	-	-	-	-	-	-
1.5	10.8	9.5	0	0	0	0	0	17	0	16	0	0	0	0	0	0
2.5	46.0	57.4	40	0	50	0	50	33	16	50	50	50	83	64	0	80
2.5+	52.2	55.7	32	16	55	20	44	25	30	44	49	61	62	52	31	77
3.5+	54.4	60.2	26	20	57	100	41	22	35	42	49	63	56	45	50	76

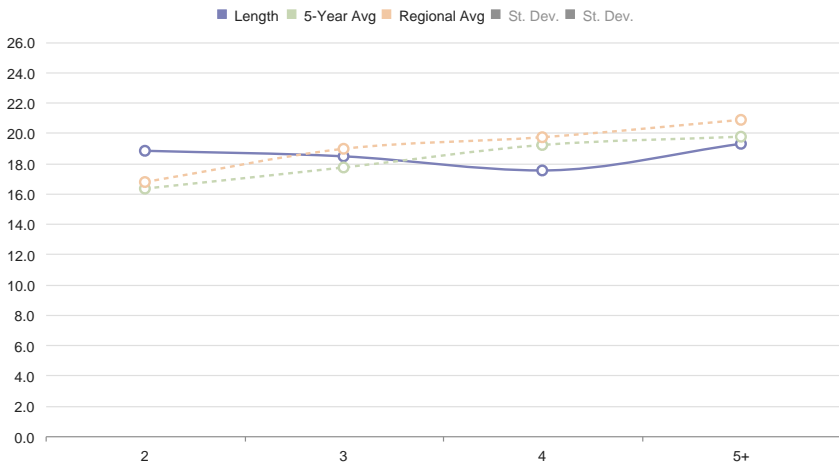
Comments

% Doe Lactation



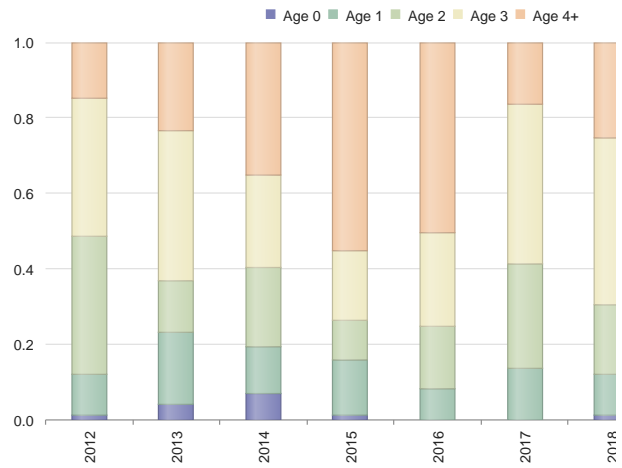
Comments

Main Beam Lengths by Age



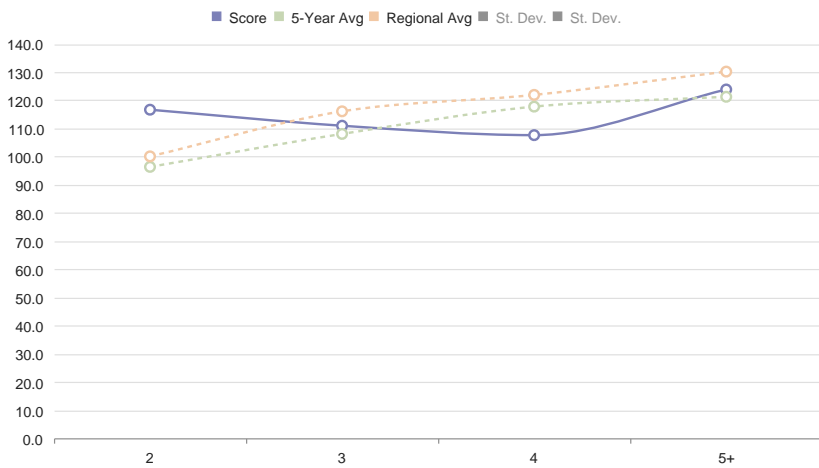
Comments

% Bucks by Age Class



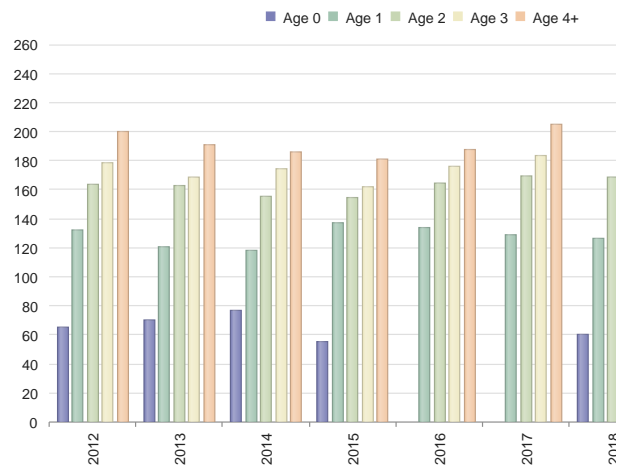
Comments

Criteria B&C Score by Age



Comments

Buck Live Weights



Comments

Criteria Buck Estimated B&C Scores

Estimated Non-typical B&C Score				
Age	Num	At Harvest	At Maturity (Min)	At Maturity (Max)
2.5	4	116 5/8	151 4/8	189 5/8
3.5	33	111	121 7/8	141 3/8
4.5	23	107 5/8	109 6/8	117 5/8
5.5+	11	123 6/8	123 6/8	123 6/8

Comments

