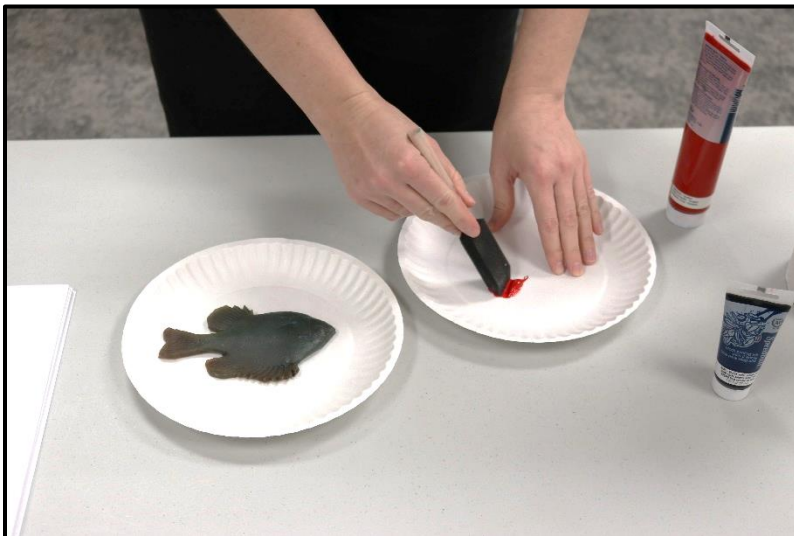


“Gyotaku: How To”

1. Lay out your supplies. Cover the printing area so all surfaces are protected from the ink.



2. Place your fish on a paper towel or plate. Dab off any water from the fish.



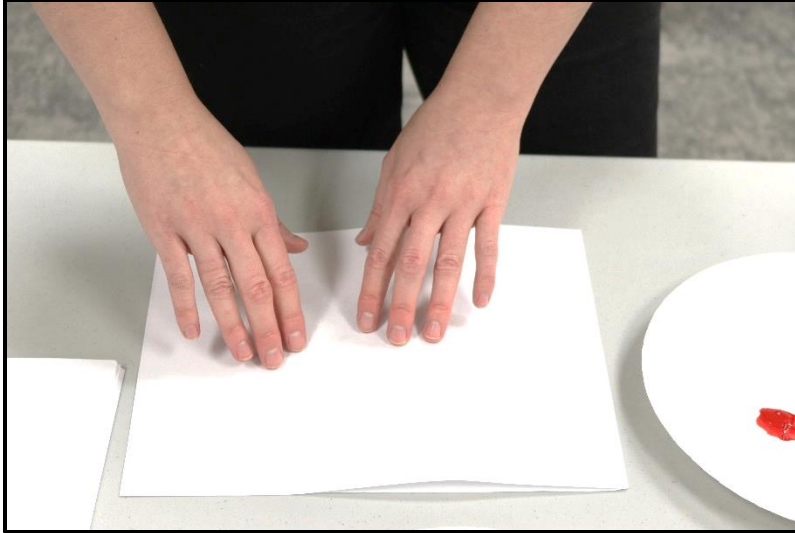
3. Squeeze a small amount of ink onto a separate plate . Squeeze a small amount of ink onto a separate plate. (You can add more paint later if you need to.)



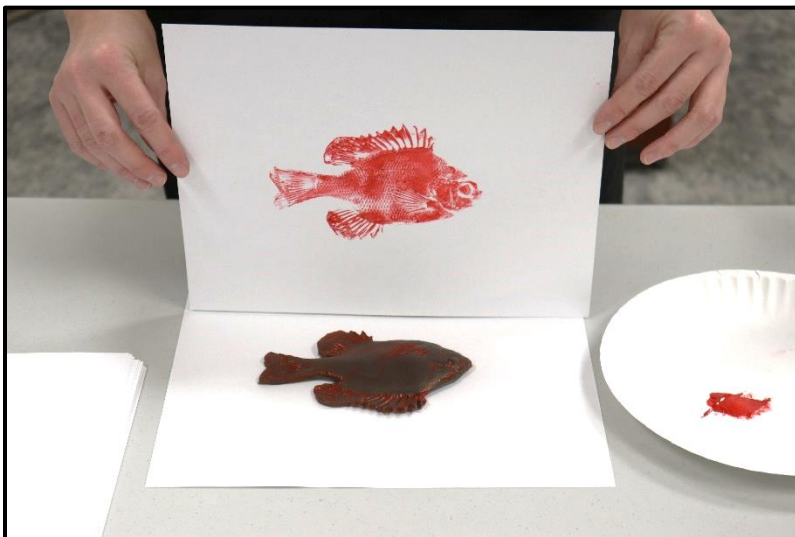
4. Taking a sponge brush or other type of brush, apply an even, thin coat of ink to your fish. **It needs to look like a “greasy film.”**



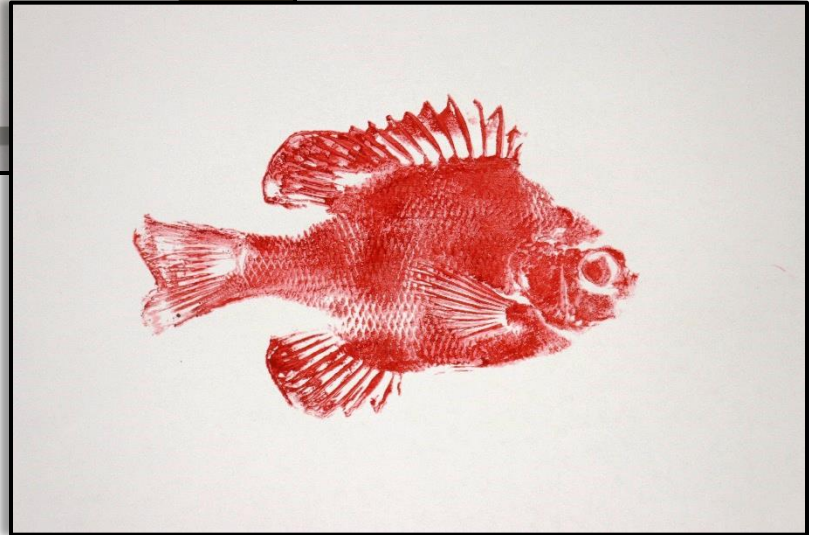
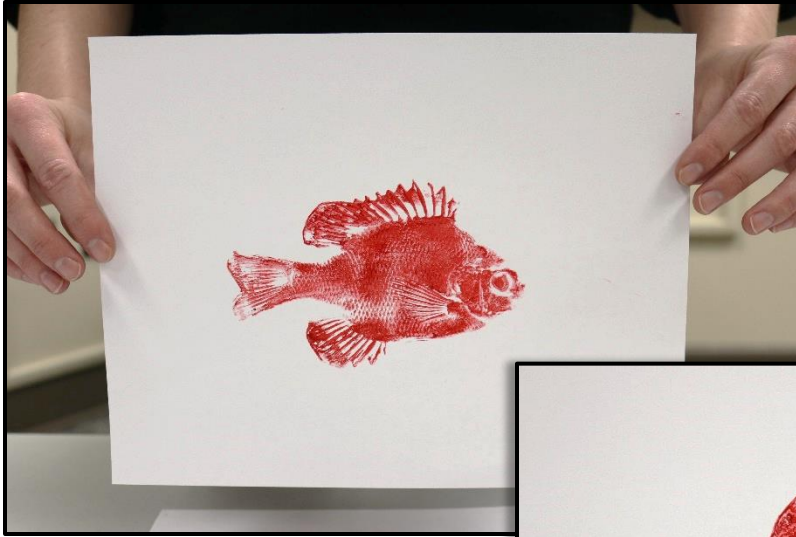
5. Make sure you can see all the scales, fins, and other features of the fish through the inky film. (You can use a smaller brush and apply different colors to your fish to make it **multicolored.**)



6. Next, lay a clean piece of paper on top of your fish. gently press all over your fish, being careful to keep your paper stationary. (Don't let the paper slide.)



7. Finally, lift your paper off the fish and enjoy your creation!



Supply List:

- Paper Plates
- Paper Towels
- Sponge Brushes (or Rollers)
- Printing Ink (e.g., Speedball Block Ink)
- Fish Replica (or Real Fish)
- Paper

