

DMAP Reports - John Starr WMA - 2022

NRIS ID 6994 DMAP ID 9104

BIOLOGIST Masley COUNTY Oktibbeha County, MS

ACRES 8244 YEARS ON DMAP 32 SOIL REGION Interior Flatwoods

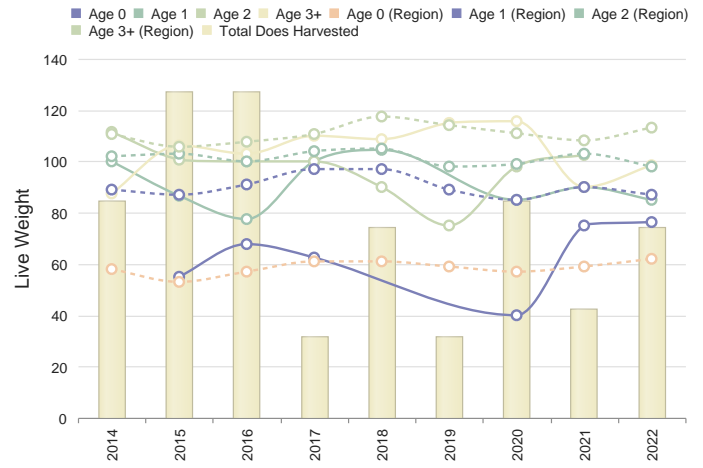
Introductory Comments

Harvest Summary

	Recommended Harvest	Number Harvested	Acres/Deer Harvested	% Data Collected
Bucks	0 - 0	8	1030	87
Does	0 - 0	10	824	100
Totals		18	458	94

Comments

Deer Weights with Harvest



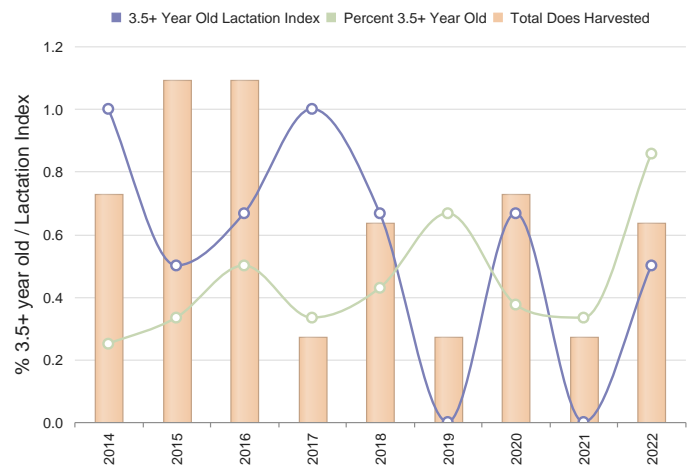
Comments

Harvest History

	Region Avg	2022	2021	2020	2019	2018	2017	2016	2015	2014	2013	2012	2011	2010	2009
Acres	37241	8244	8244	8244	8244	8244	8244	8244	8244	8244	8244	8244	8244	8244	8244
Total Deer	267.2	37	18	15	19	22	22	13	36	49	26	45	51	64	41
Bucks	116.2	17	8	10	10	19	14	8	17	27	16	22	26	39	13
Does	151.0	20	10	5	9	3	8	5	19	22	10	23	25	25	28
Acres/Deer	139	219	458	549	433	374	374	634	229	168	317	183	161	128	201
Bucks	320	482	1030	824	824	433	588	1030	484	305	515	374	317	211	634
Does	246	401	824	1648	916	2748	1030	1648	433	374	824	358	329	329	294

Comments

Deer Age Structure in Relation to Harvest and Lactation Rates



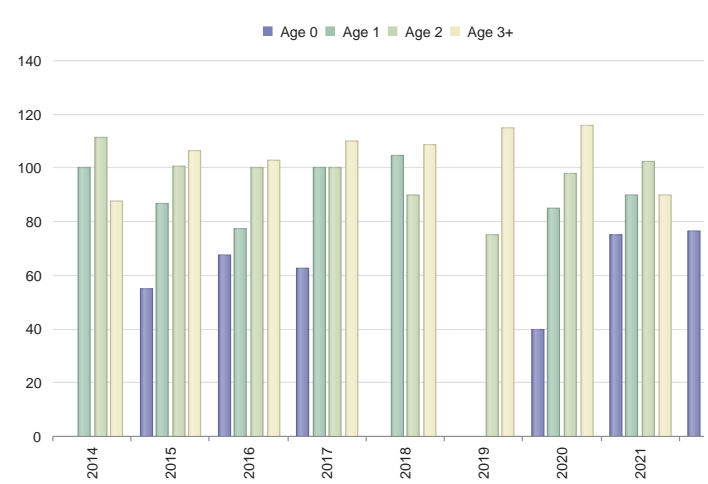
Comments

Buck Harvest History

	Region	Avg	2022	2021	2020	2019	2018	2017	2016	2015	2014	2013	2012	2011	2010
Bucks	116.2	18.9	8	10	10	19	14	8	17	27	16	22	26	39	1
Acres/Buck	321.8	607.8	1030	824	824	433	588	1030	484	305	515	374	317	211	63
% .5 Bucks	7.0	12.2	12	N/A	20	N/A	N/A	N/A	N/A	3	6	N/A	N/A	N/A	N/A
# .5 Bucks	8.4	2.4	1	0	2	0	0	0	0	1	1	0	0	0	0
Avg Weight	61.6	64.0	56	N/A	42	N/A	N/A	N/A	N/A	58	55	N/A	N/A	N/A	N/A
% 1.5 Bucks	12.8	18.1	N/A	N/A	10	5	7	12	23	3	N/A	N/A	3	12	N/A
# 1.5 Bucks	15.2	4.6	0	0	1	1	1	1	4	1	0	0	1	5	1
% Spikes	65.6	70.5	N/A	N/A	100	100	0	0	25	0	N/A	N/A	100	80	N/A
Avg Weight	101.2	103.1	N/A	N/A	85	100	120	101	84	125	N/A	N/A	115	97	N/A
Avg Points	2.5	3.1	N/A	N/A	2.0	2.0	5.0	3.0	3.8	6.0	N/A	N/A	0.0	1.8	N/A
Avg Base	2.0	1.8	N/A	N/A	0.0	0.0	2.5	0.0	1.3	2.3	N/A	N/A	0.0	0.2	N/A
Avg Length	5.3	5.8	N/A	N/A	0.0	1.5	9.8	5.0	4.0	13.3	N/A	N/A	0.0	1.0	N/A
Avg Spread	5.7	5.5	N/A	N/A	0.0	0.0	9.5	0.0	7.6	10.5	N/A	N/A	0.0	1.7	N/A
% 2.5 Bucks	17.2	36.1	N/A	20	30	31	42	12	29	33	37	40	3	23	30
# 2.5 Bucks	20.4	6.4	0	2	3	6	6	1	5	9	6	9	1	9	1
Avg Weight	138.0	139.5	N/A	137	141	134	141	140	138	148	145	151	120	146	130
Avg Points	6.6	6.6	N/A	7.5	6.0	6.8	6.5	4.0	6.8	6.7	6.0	7.4	5.0	6.8	7.1
Avg Base	3.2	3.3	N/A	2.7	2.4	2.9	3.0	4.0	2.5	3.2	3.3	3.8	3.4	3.5	6.1
Avg Length	14.1	14.4	N/A	15.8	14.0	13.7	15.0	14.9	13.2	14.3	14.4	15.2	14.3	15.2	16.0
Avg Spread	11.4	11.6	N/A	12.3	9.3	11.9	11.9	10.5	9.5	11.9	11.8	11.9	12.5	12.1	13.0
% 3.5 Bucks	25.6	24.9	37	40	10	42	35	50	29	25	6	13	3	17	11
# 3.5 Bucks	30.6	4.5	3	4	1	8	5	4	5	7	1	3	1	7	1
Avg Weight	151.2	156.4	146	161	147	143	160	162	154	154	165	180	162	147	140
Avg Points	7.6	8.1	8.0	7.8	10.0	9.4	9.2	7.5	6.0	7.3	7.0	7.7	9.0	7.9	7.1
Avg Base	3.7	3.8	4.1	3.5	4.5	3.2	3.5	4.0	2.8	3.2	4.8	3.9	3.8	3.5	3.0
Avg Length	16.3	16.7	17.0	16.7	17.5	17.1	16.3	15.2	18.6	14.2	17.0	17.3	16.3	16.3	16.0
Avg Spread	12.8	13.5	12.8	14.1	15.0	14.9	11.8	15.5	13.3	13.7	13.0	15.5	14.5	13.3	13.0
% 4.5+ Bucks	30.6	15.6	37	30	30	21	14	25	5	18	12	27	7	10	10
# 4.5+ Bucks	36.2	2.8	3	3	3	4	2	2	1	5	2	6	2	4	4
Avg Weight	N/A	169.8	169	176	161	169	155	157	180	162	160	169	170	160	150
Avg Points	8.4	8.1	8.0	7.7	8.3	7.5	8.0	8.0	10.0	8.0	8.0	9.8	8.0	8.3	6.1
Avg Base	4.2	4.2	3.3	4.4	4.3	5.0	3.7	4.1	4.5	4.3	3.7	4.5	4.2	4.6	3.0
Avg Length	18.2	18.2	16.5	18.3	14.5	18.2	18.3	17.6	20.8	17.9	17.7	19.1	17.0	18.0	15.0
Avg Spread	14.7	14.8	12.7	15.5	9.5	13.2	15.0	15.8	14.8	14.3	15.5	15.9	14.2	13.8	13.0

Comments

Doe Live Weights



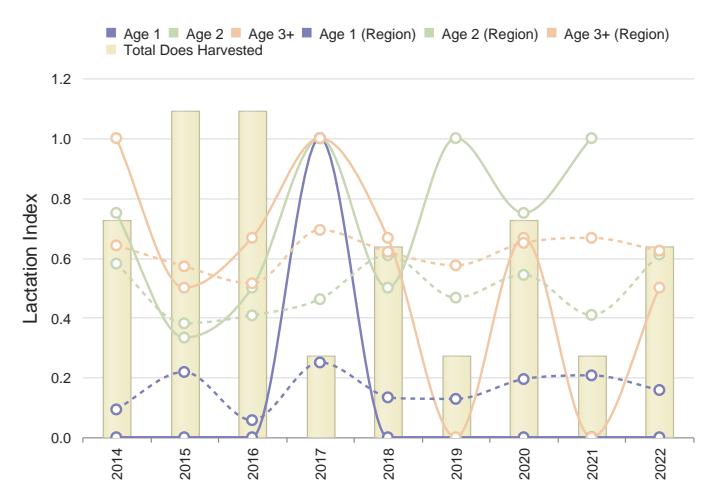
Comments

Doe Harvest History

	Region	Avg	2022	2021	2020	2019	2018	2017	2016	2015	2014	2013	2012	2011	2010
Does	151.0	21.2	10	5	9	3	8	5	19	22	10	23	25	25	20
Acres/Doe	252.2	648.5	824	1648	916	2748	1030	1648	433	374	824	358	329	329	290
% .5 Does	7.6	15.5	30	20	11	N/A	N/A	40	21	13	N/A	4	4	20	1
# .5 Does	12.0	3.5	3	1	1	0	0	2	4	3	0	1	1	5	1
Avg Weight	59.6	61.5	76	75	40	N/A	N/A	62	67	55	N/A	80	60	64	60
% 1.5 Does	20.8	21.4	10	20	11	N/A	25	20	10	22	20	17	8	4	10
# 1.5 Does	31.8	5.1	1	1	1	0	2	1	2	5	2	4	2	1	1
Avg Weight	89.6	90.4	85	90	85	N/A	104	100	77	86	100	92	80	106	80
% 2.5 Does	16.8	30.3	N/A	40	44	33	25	20	21	13	40	30	N/A	16	1
# 2.5 Does	25.8	5.8	0	2	4	1	2	1	4	3	4	7	0	4	1
Avg Weight	100.6	99.0	N/A	102	98	75	90	100	100	100	111	104	N/A	96	90
% 3.5+ Does	51.8	34.4	60	20	33	66	37	20	31	18	20	39	8	24	20
# 3.5+ Does	79.4	7.4	6	1	3	2	3	1	6	4	2	9	2	6	1
Avg Weight	109.0	104.5	98	90	115	115	108	110	102	106	87	101	104	108	100
% Lactation	N/A	-	-	-	-	-	-	-	-	-	-	-	-	-	-
1.5	16.0	34.9	0	0	0	N/A	0	100	0	0	0	0	0	100	0
2.5	61.0	65.2	N/A	100	75	100	50	100	50	33	75	14	N/A	50	40
2.5+	62.0	63.7	50	50	71	33	60	100	60	43	83	38	0	70	40
3.5+	62.0	69.9	50	0	67	0	67	100	67	50	100	56	0	83	50

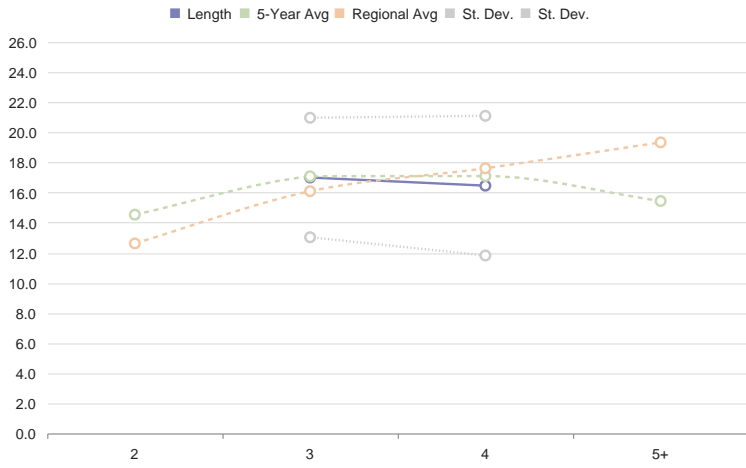
Comments

% Doe Lactation



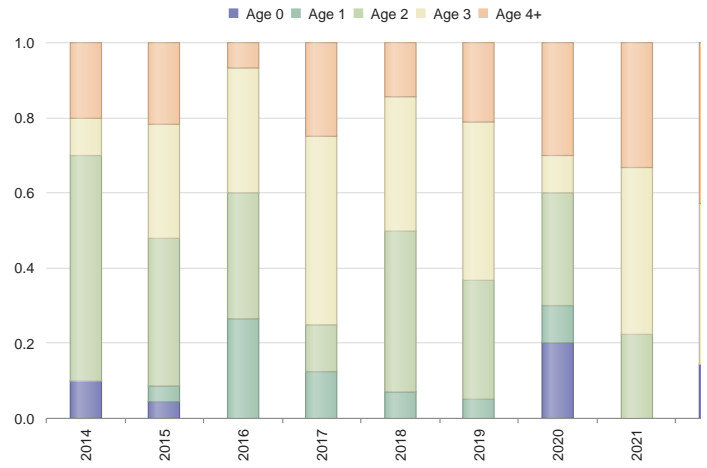
Comments

Main Beam Lengths by Age



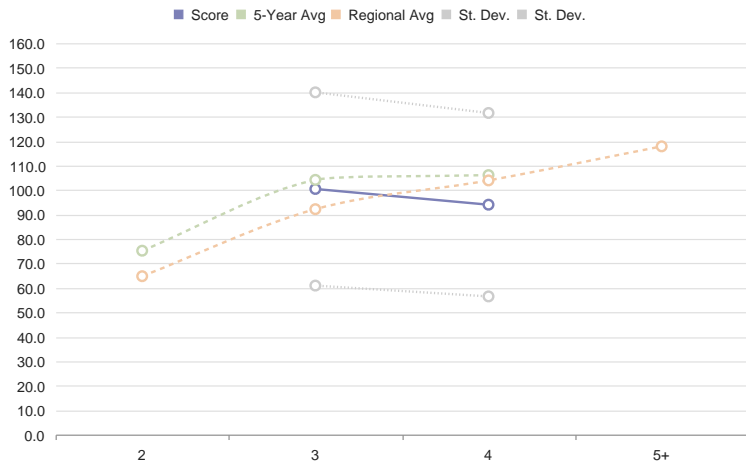
Comments

% Bucks by Age Class



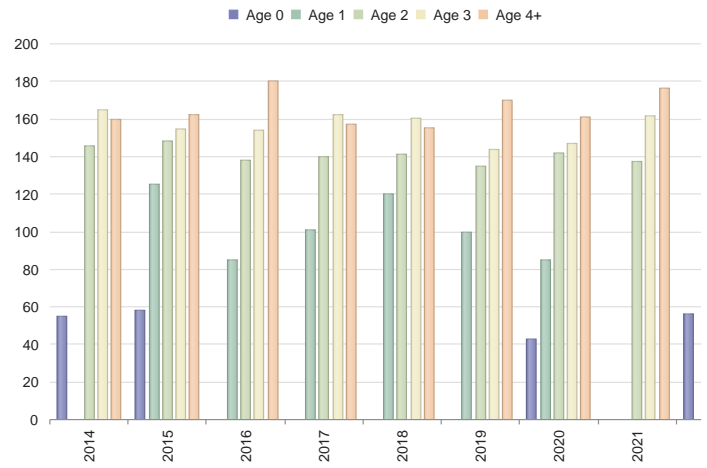
Comments

Criteria B&C Score by Age



Comments

Buck Live Weights



Comments

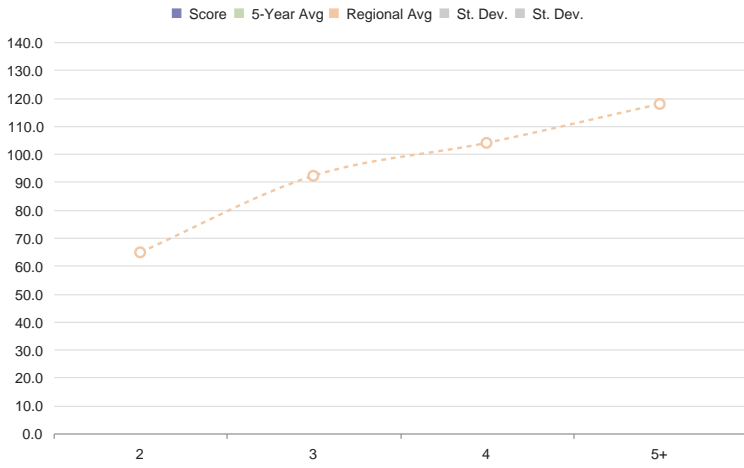
Criteria Buck Estimated B&C Scores

Age	Num	Estimated Non-typical B&C Score		
		At Harvest	At Maturity (Min)	At Maturity (Max)
2.5	0	0	0	0
3.5	3	100 3/8	115 3/8	127 7/8
4.5	3	94	98 7/8	102 6/8
5.5+	0	0	0	0

Comments

Attachments

Management Buck B&C Score by Age



Comments

Minimum Number Known Alive (MNKA)

	2022	2021	2020	2019	2018	2017	2016	2015	2014	2013	2012	2011	2010	2009	2008
Reconstructed Bucks	-	-	-	-	-	47	51	57	52	57	45	56	48	54	59
Reconstructed Does	-	-	-	-	-	19	27	33	33	42	37	43	46	67	77
Buck Harvest	-	-	-	-	-	8	17	27	16	22	26	39	13	18	22
Doe Harvest	-	-	-	-	-	5	19	22	10	23	25	25	28	31	32
% Harvested	-	-	-	-	-	20	46	54	31	45	62	65	44	40	35

Comments

