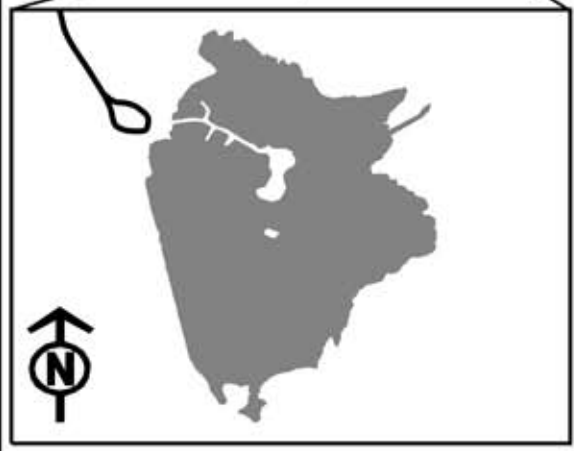


Vicinity Map



Bureau of Fisheries

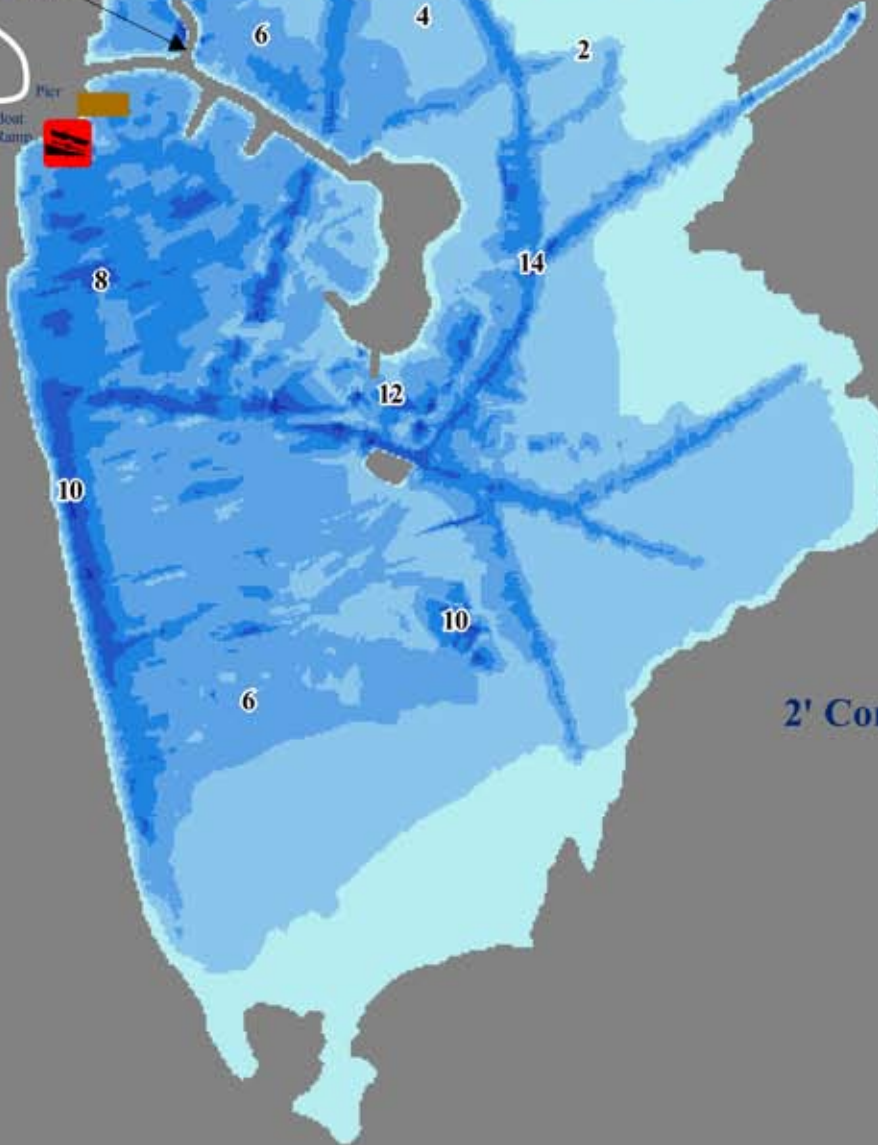
The MDWFP makes no warranties of any kind, either express or implied, for damages arising out of the use of this publication. We have made reasonable efforts to provide you with accurate maps, but we cannot exclude the possibility of errors or changes in actual conditions. Map Published by the Mississippi Department of Wildlife Fisheries and Parks GIS Lab.

Neshoba County Lake

Neshoba County, MS
Acres 138

Access Road

"No Access"



2' Contour Intervals

Description

Depth

- 0 - 2
- 2 - 4
- 4 - 6
- 6 - 8
- 8 - 10
- 10 - 12
- 12 - 14

2,400 1,200 0 2,400 Feet