



# Claude Bennett 2024

## Reel Facts

Buford Lessley – Fisheries Biologist

[Buford.Lessley@wfp.ms.gov](mailto:Buford.Lessley@wfp.ms.gov) (601) 859-3421

**General Information:** Lake Claude Bennett is a 71 acre lake located near Rose Hill. The lake was opened in 1961, and named for a former president of the University of Southern Mississippi who lived in Jasper County.

**Location:** Approximately 20 miles East of Bay Springs off Hwy 18.

**Fishery Management:** crappie, Largemouth Bass, bream, and catfish.

**Purchase a Fishing License:** [https://www.ms.gov/mdwfp/hunting\\_fishing/](https://www.ms.gov/mdwfp/hunting_fishing/)

### Amenities

- Boat ramp
- Fishing piers
- Bank fishing
- 31 campsites

### Creel Limits

- 30 crappie per day with no length restrictions.
- 30 Largemouth Bass (LMB) per day. Anglers are encouraged to keep their limit of LMB.
- 100 bream per day.
- 10 catfish per day.

### Regulations

- Pole or rod and reel fishing only. No trot lines, limb lines, set hooks, jugs or yo-yo's are allowed.
- Carp, gar, buffalo and Bowfin may be taken by use of bow and arrow at night.

### Permits

- Sport fishing licenses and fishing permits are required except on designated days during National Fishing and Boating Week.
- Camping is on a first-come first-serve basis. Daily and monthly permits are available.

### Sport fishing Tips

#### Crappie

- In the spring, target shoreline areas that contain brush piles with jigs or minnows in water depths of 4 – 6 ft. During the summer and fall fish tops or creek ledges in 12 - 16 ft. of water.

#### Largemouth Bass

- Fish submerged structure in coves and on points with soft plastic worms, spinner baits, or shallow diving crank baits.
- Use crickets or red worms in water 2 – 4 ft. in depth. Earthen piers and coves provide great opportunities.

#### Catfish

- Use liver, wigglers or stink baits in 4 – 6 ft. of water with rod and reel.

**Below:** Lake Claude Bennett record fish. Record fish must be weighed and verified by the lake manager, lake supervisor, or fisheries biologist. Anglers who catch a lake record fish will receive a certificate acknowledging their catch. There is no minimum weight for any open lake record.

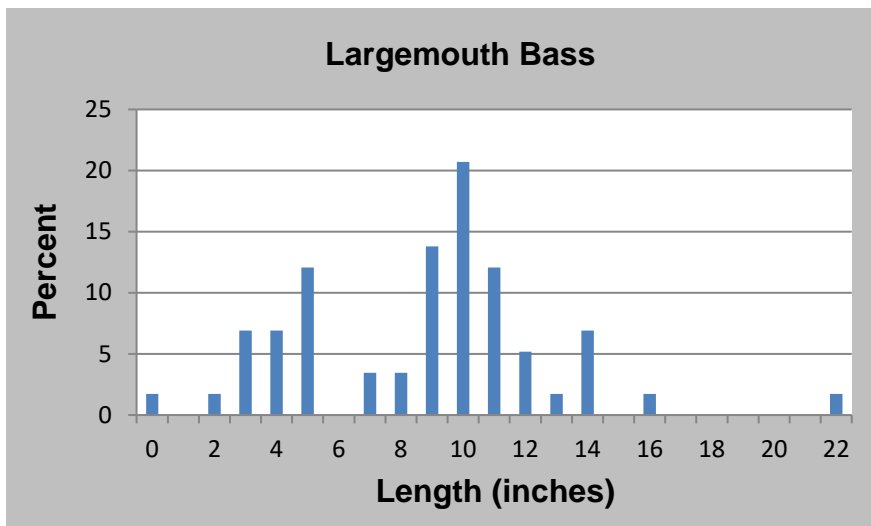
Fish Species	Weight (pounds)	Angler	Date Caught
Largemouth Bass	14.75	Mike Boone	1997
Crappie	3.40	Paul Bryan	March 2015
Redear Sunfish	Open	-	-
Bluegill	Open	-	-
Catfish	Open	-	-

**Right:** Claude Bennett has a healthy population of catfish. Numerous hybrid channel/blue catfish have been stocked for the youth fishing rodeo program. This catfish was collected during fall electrofishing.



**Below:** Results from 2023 fall electrofishing survey at Claude Bennett State Lake. The fishery features numerous Largemouth Bass with a quality forage base.

Species	# of fish collected	% of sample	Average Length (inches)	Maximum Length (inches)	Average Weight (pounds)	Catch Rate – Adult fish (fish/hour)
Bluegill	68	41	3.11	8.35	0.13	54.4
Largemouth Bass	58	35	9.21	22.72	0.57	46.4
Threadfin Shad	2	1	5.16	5.28	0.05	1.6
Redear Sunfish	26	16	8.07	11.02	0.34	20.8
Gizzard Shad	12	7	12.28	13.03	0.57	9.6

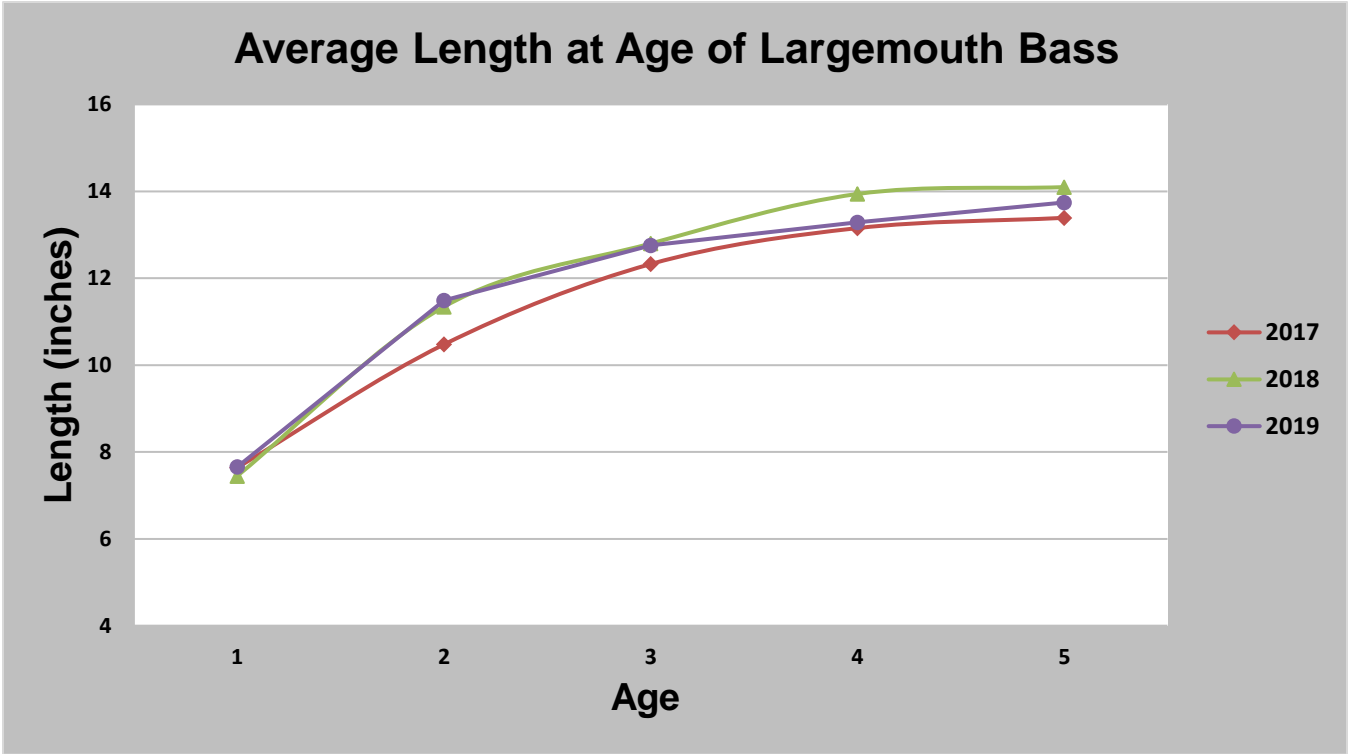


**Left:** The length distribution of Largemouth Bass collected during fall electrofishing indicates the population has an overabundance of small bass. Although some larger fish do exist, the majority are less than 15 inches. Anglers are encouraged to keep the 30 fish limit on each visit. Increased harvest will result in a healthier bass population.

**Below:** Lake record 3.4-pound crappie caught in March 2015 by Paul Bryan.

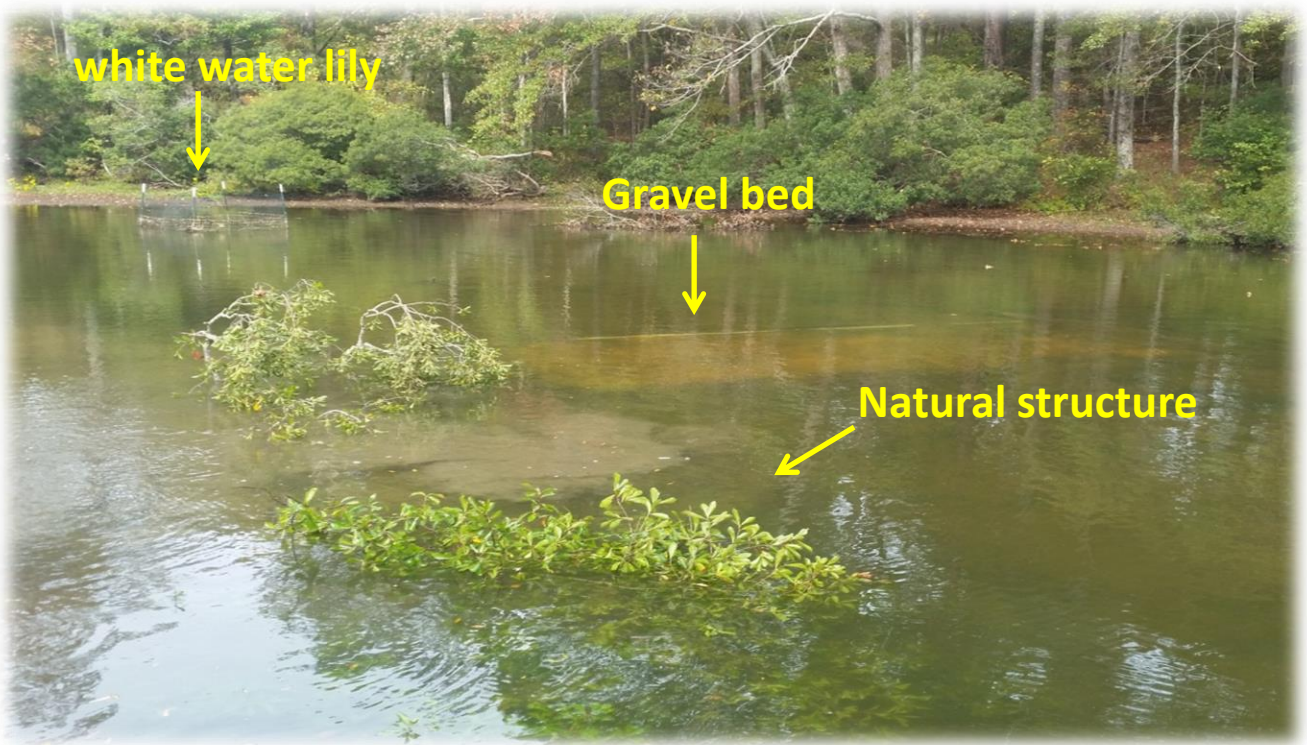


**Below:** Average lengths of Largemouth Bass at ages 1-5 over the last four years from Lake Claude Bennett. MDWFP biologists have removed 890 pounds of small Largemouth Bass and stocked over 50,000 Threadfin Shad and over 58,000 Bluegill for supplemental forage. Largemouth Bass growth rates of ages one- and two-year-old fish have increased each year.



**Right:** Lake Claude Bennett also boasts a population of older bass which have taken advantage of the supplemental forage base. These fish were caught in December 2018 on shad imitating lures.

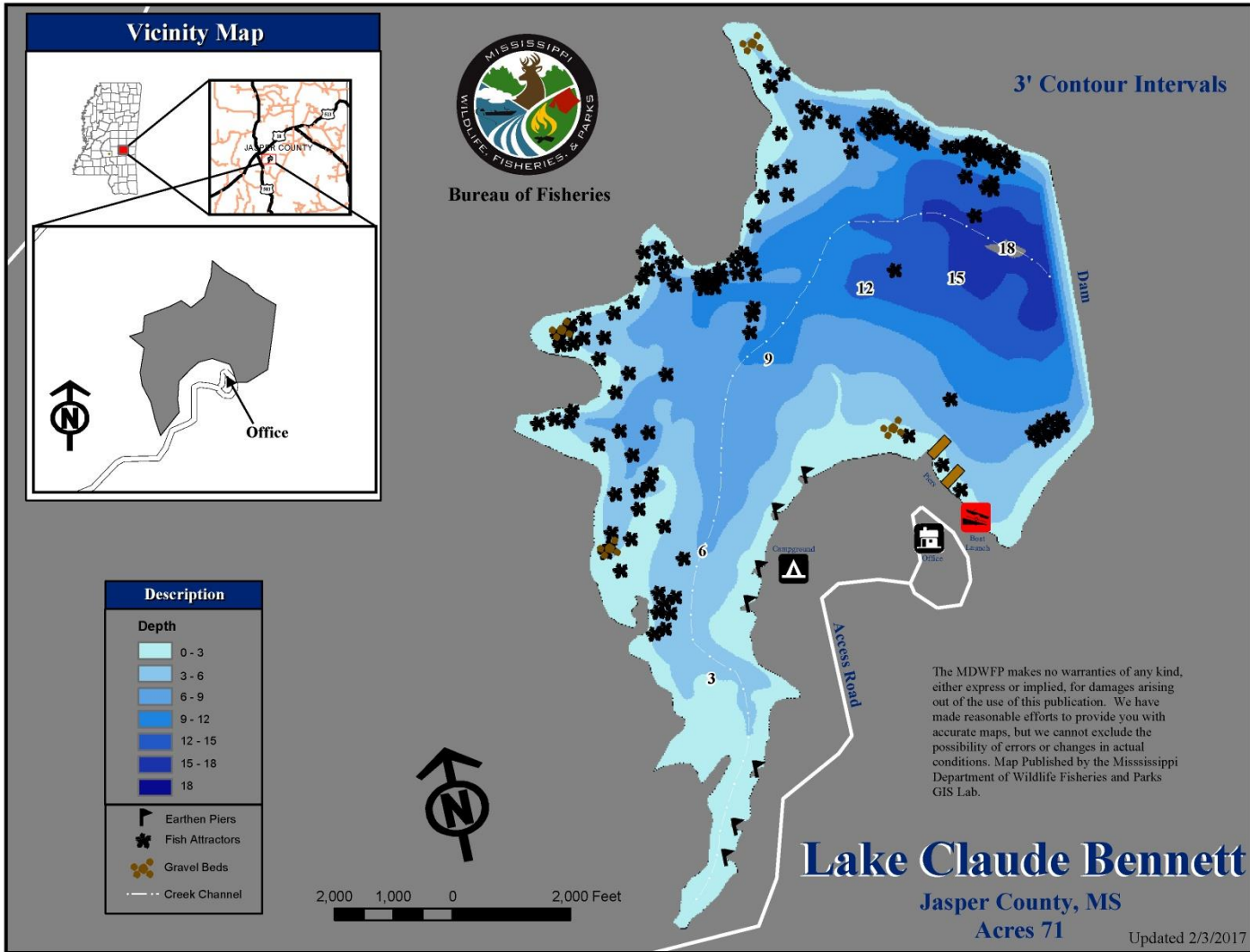




**Above and Below:** MDWFP biologists have enhanced habitat at Claude Bennett by adding gravel spawning beds for bream along with natural cover in multiple depths. White water lily was transplanted into shallow coves in an effort to establish this plant species. Four artificial habitat sites were deployed in the arrangement below. These sites included 20 grass bed structures and three cube structures. Artificial habitat sites were selected based on depth and were deployed along drop-offs. The locations of gravel beds and fish shelters can be found on the lake depth map.



**Below:** Depth map for Lake Claude Bennett



**Left:** Bald eagles nest near the lake which adds a unique aesthetic value. The pair can often be seen catching fish in the lake.