



*Bloom*

## Planting Tips:

This plant grows in full sun to part shade. Arrowwood is rooted from stem cuttings in the summer. Propagation by seed is also an option.

Seeds should be collected in the autumn and stored in a cool, dry area before planting in the summer.

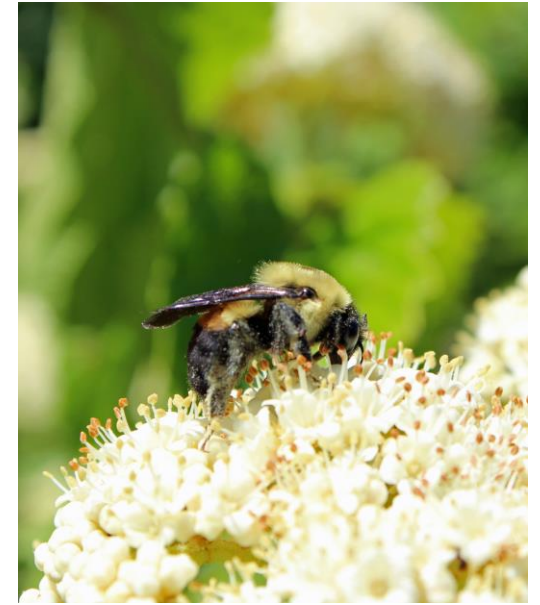
## Visitor Education Center (VEC)

### About Us

The Visitor Education Center (VEC) at the Bob Tyler Fish Hatchery is the first and only facility of its kind in Mississippi. It is owned and operated by the Mississippi Department of Wildlife, Fisheries, and Parks.

In addition to the native habitat area, the VEC features a 10,000 gallon aquarium, interactive exhibits, displays, artifacts, fishing rodeo pond, gift shop and gallery, and the World Record White Crappie. All of these elements serve as entertaining and engaging learning experiences for all visitors.

The VEC promotes the sport of freshwater fishing in Mississippi, and encourages the conservation and stewardship of aquatic resources. The facility offers guided and self-guided tours along with a myriad of programs and workshops for the public.



*Bumblebee on bloom*

## MISSISSIPPI NATIVE: ARROWWOOD

*(Viburnum dentatum)*

**BTFH Visitor  
Education Center**

**Phone:** (662) 563-8068

**Web:** [www.mdwfp.com](http://www.mdwfp.com)

**Address:** P.O. Box 100, 457  
CR 36, Enid, MS 38927



*Green berries*

## Description/Season:

This deciduous shrub has multiple straight stems that form a plant with a rounded shape.

The arrowwood produces clusters of white, flat-topped flowers. This perennial will bloom May – July.

Berries follow in late summer, turning from green to deep blue. Leaves are oval and coarsely toothed.

Leaves turn from green in the spring and summer to yellow and red in the fall.

## Size:

Flowers are 2 to 4 inches across. The plant usually reaches heights of 6 to 8 feet but can reach heights of 20 feet.

---

## Other Names:

Southern Arrowwood

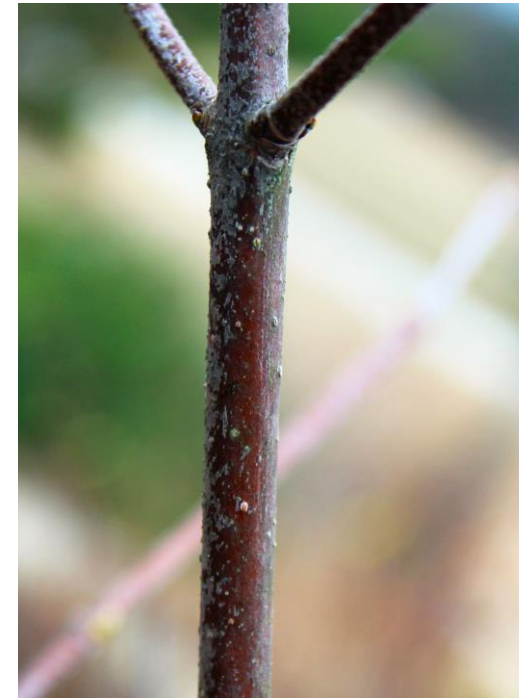
---

## Habitat:

Arrowwood shrubs are normally found along stream banks and in well-drained, moist soils.



*Ripe berries*



*Stem*

## Interesting Facts:

This plant attracts birds, butterflies, bees, and small mammals. Native Americans used the stems for making arrows.



Information Sources: Lady Bird Johnson Wildflower Center, MSU Extension, Clemson.edu, USDA, and VEC Staff. Pictures taken at the VEC (Wiggins, E.J.); property of MDWFP.