



# Elvis Presley Lake 2025

## REEL FACTS

Dustin Rodgers

[Dustin.Rodgers@wfp.ms.gov](mailto:Dustin.Rodgers@wfp.ms.gov)

Telephone (662) 840-5176

**General Information:** Elvis Presley Lake, which first opened in 1971, has a surface area of 322 acres. Historically, the lake was known for its good bream fishing. On April 28, 2014 an EF-4 tornado made a direct hit at Elvis Presley Lake damaging approximately 80% of the facility. In 2021 the lake was drained for a complete renovation, and reopened in May of 2024.

**Location:** North 1/2 mi. off Hwy 78 on Veteran's Blvd. Right on CR 1460 to CR 995.

**Fishery Management:** Largemouth Bass, Spotted Bass, crappie, bream, and catfish.

**Purchase a Fishing License:** [https://www.ms.gov/mdwfp/hunting\\_fishing/](https://www.ms.gov/mdwfp/hunting_fishing/)

### Amenities

- 2 public concrete boat ramps with courtesy piers.
- 2 fishing piers.
- Campground with 16 sites with water and electrical hookups. Primitive camping is also available.\*\*Camping is temporarily closed.\*\*
- Picnic areas with grills.
- Rental pavilion.
- Restrooms.

### Creel Regulations

- Largemouth Bass: 10 bass per day per angler, 16"-22" slot limit.
- Crappie: 20 per day per angler.
- Bream: 50 per day per angler combined.
- Catfish: 10 per day per angler.

### Regulations

- Fishing is not allowed from the courtesy piers adjacent to the boat ramps.
- Rod and reel fishing is allowed. No trotlines, FFFD's, jugs, yo-yo's, limblines, throwlines, or set hooks are allowed.
- Sport fishing licenses and fishing permits are required and can be purchased at the lake office.
- Licenses and permits are not required on designated free fishing days during National Fishing and Boating Week.
- Skiing is allowed daily from noon until sunset.
- PFD's are required.

### Fishing Tips

#### Largemouth Bass

- Target main lake points and creek channels with Carolina/Texas-rigged plastics, jigs, shaky heads, or crankbaits.
- In the spring, target coves with spinnerbaits, T-rigged lizards, and weightless soft plastics.

#### Crappie

- In the spring, target brush along the western banks with small jigs or live bait.
- Target suspended fish near the dam and other deep water refuges.

#### Bream

- Try shallow coves with cover. Tightline both crickets and redworms.

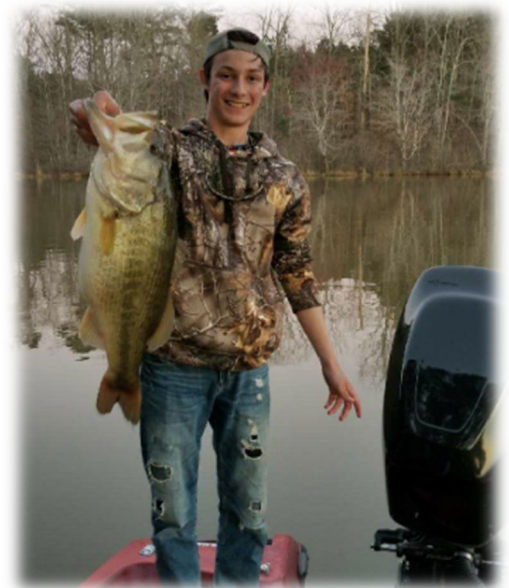
#### Catfish

- Target laydowns and deeper areas around fishing piers.

**Below:** Elvis Presley Lake record fish. Record fish must be weighed and verified by the lake manager, lake supervisor, or fisheries biologist. Anglers who catch a lake record fish will receive a certificate acknowledging their catch. There is no minimum weight for any open lake record.

Fish Species	Weight (pounds)	Angler	Date Caught
Largemouth Bass	10.00	Zachery Brown	March 2018
Crappie	Open	-	-
Redear Sunfish	0.44	Angela Moore	August 2024
Bluegill	Open	-	-
Catfish	26.00	Faron Scott	October 2016

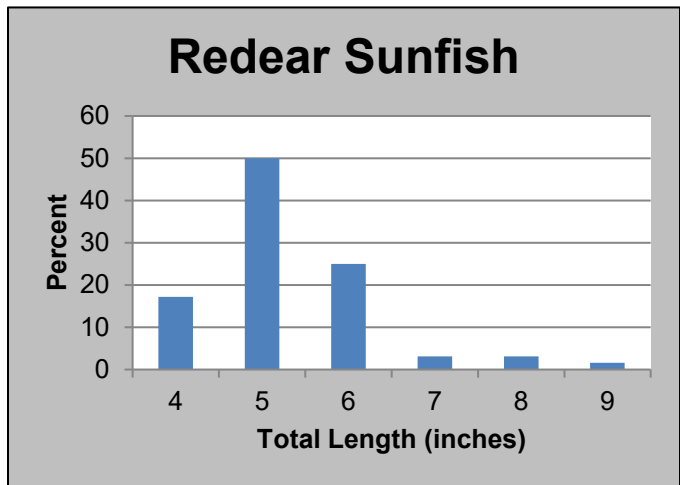
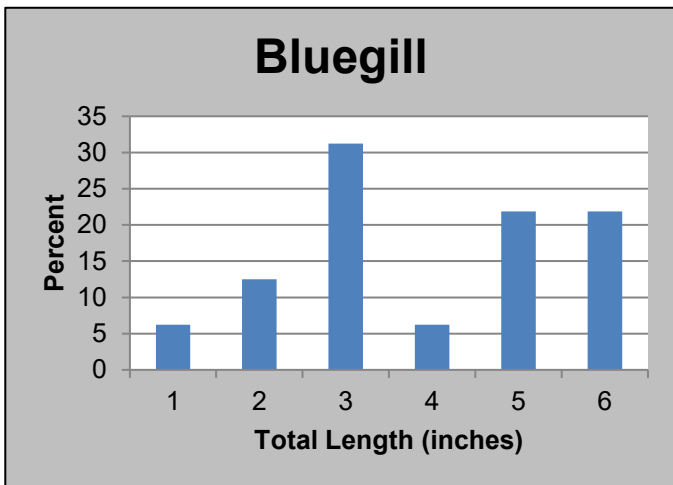
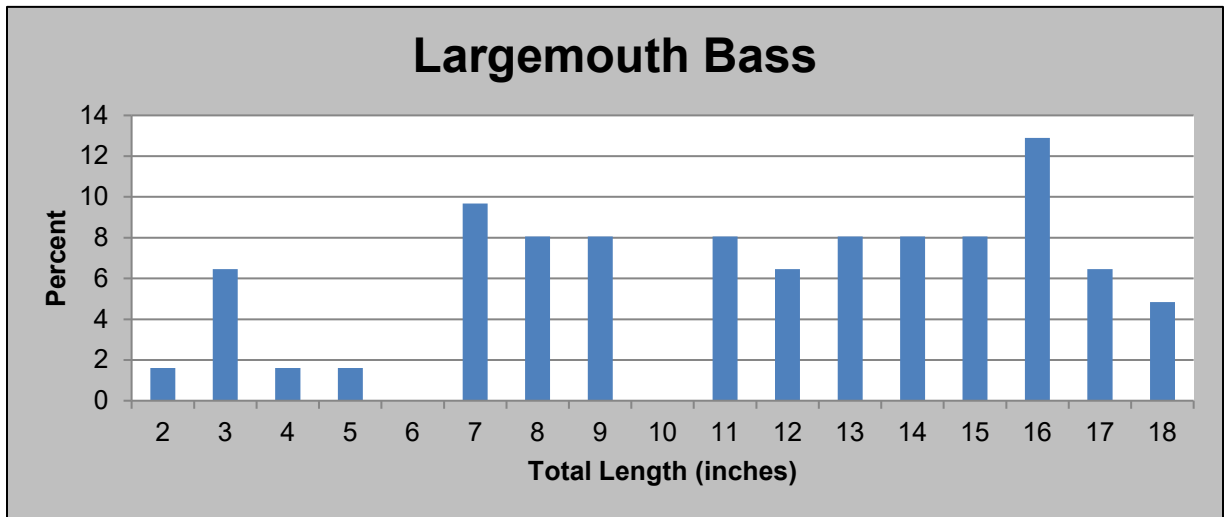
**Right:** The current lake record Largemouth Bass. With the restocking and new fish population, we anticipate new records being set.



**Left:** Fall electrofishing fun at Elvis Presley Lake. The reopening was a success and we're looking forward to filling some of the vacant lake records!

**Below:** Results from the 2024 fall electrofishing survey on Elvis Presley Lake. Sampling was completed in December along 3.1 miles of shoreline. Elvis Presley Lake is sampled every fall.

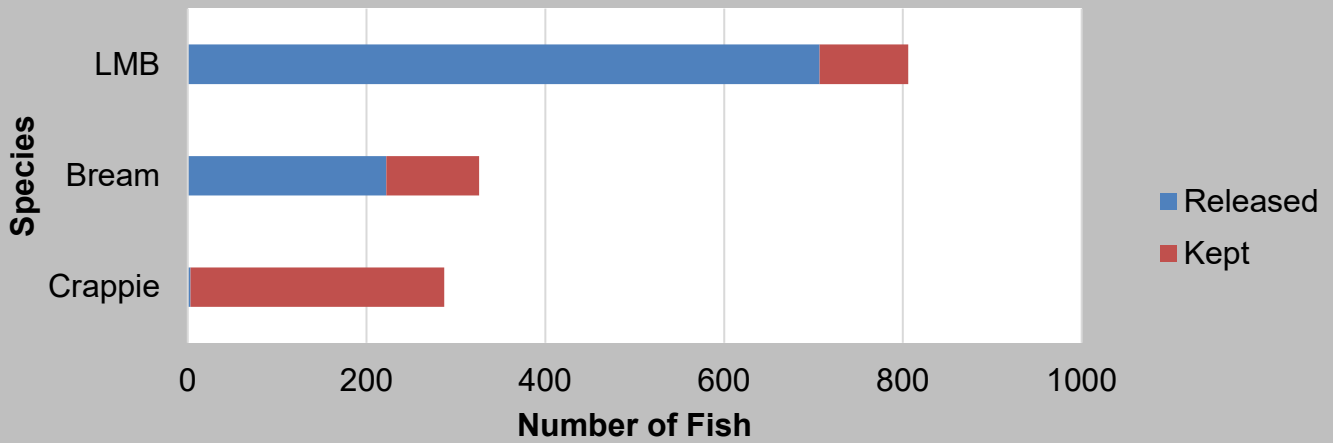
Species	# of fish collected	% of sample	Average Length (inches)	Maximum Length (inches)	Average Weight (pounds)	Catch Rate – (Adult fish/mile)
Threadfin Shad	687	80	3	5.9	-	-
Yellow Bullhead	10	1	8.9	10.6	-	3
Warmouth	4	<1	6.9	7.1	0.2	1
Bluegill	32	4	4.5	6.9	0.2	8
Redear Sunfish	64	8	5.8	9.1	0.1	21
Largemouth Bass	62	7	12	18.4	1.5	17



**Above:** Length distributions for Largemouth Bass, Bluegill, and Redear Sunfish collected during fall 2024 electrofishing.

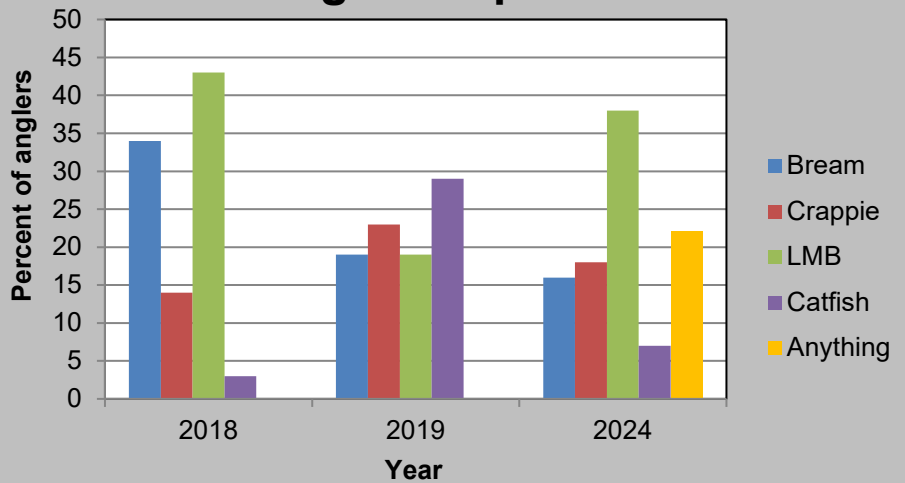
**Below:** Opening day creel results for Elvis Presley Lake. On May 22<sup>nd</sup>, 2024, of the 1,419 fish that were caught, 932 were released and 487 were kept.

## 2024 Opening Day Creel Results

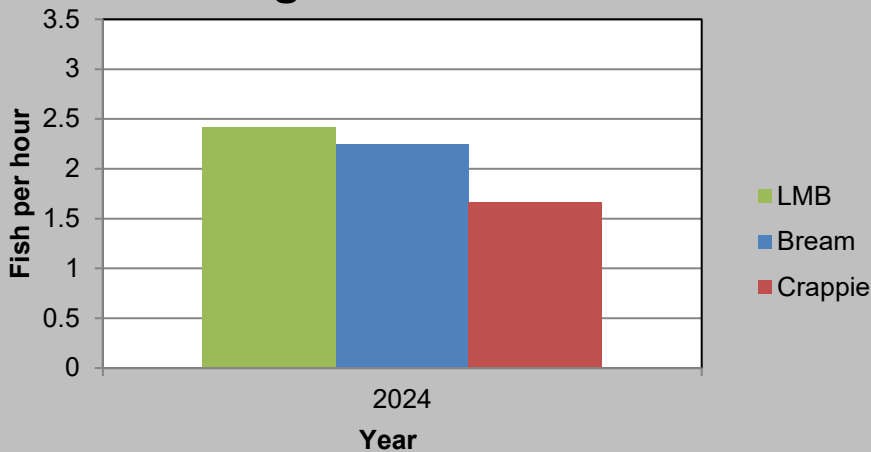


**Right:** Based on creel survey data from Elvis Presley Lake, anglers fish for a variety of species.

## Targeted Species



## Angler Catch Rates



**Left:** Angler catch rates for bream, crappie, and Largemouth Bass (LMB) at Elvis Presley based on spring creel surveys. Catch rates are typically very high for newly renovated lakes, but will decline as fish become more accustomed to fishing pressure.

<b>Have you been interviewed on Elvis Presley in 2024?</b>	<b>%</b>
Yes	5
No	95
<b>Do you use a Live scope or other form of forward-facing sonar?</b>	<b>%</b>
Yes	11
No	89
<b>Considering all factors, how satisfied are you with the fishing at Elvis Presley?</b>	<b>%</b>
Very Satisfied	63
Satisfied	26
Neutral	11
Dissatisfied	5
Very Dissatisfied	0

**Left:** Creel surveys provide a good opportunity to collect information and opinions from anglers. The lake reopened in May 2024, which brought many new and returning anglers to Elvis Presley. The majority of anglers did not use forward-facing sonar. Eighty-nine percent were satisfied with the fishing and facilities this year.



**Above:** Both Largemouth Bass and crappie have exhibited fantastic growth rates since the renovation. Bass are already reaching 18", and the average crappie caught during spring creel surveys was 11.3".

